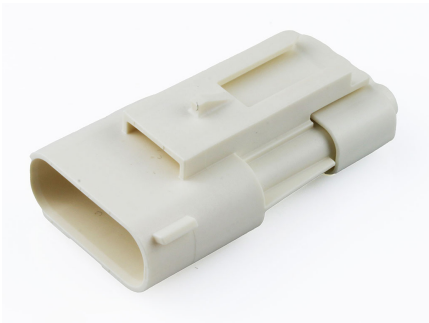




**Part Number :** [2077781204](#)  
**Product Description :** Squba 3.6 Sealed Plug Assembly, 3.60mm Pitch, 4 Circuits, Single Row, Glow-Wire Capable, with Clipslot, Key B, Natural, UL1007/UL1061 Compatible  
**Series Number :** 207778  
**Status :** Active  
**Product Category :** Connector Housings



## Documents & Resources

**Drawings**  
[2077781204\\_sd.pdf](#)  
[2077780000-PK-000.pdf](#)

**3D Models and Design Files**  
[2077781204\\_stp.zip](#)

**Specifications**  
[2077760000-AS-000.pdf](#)  
[2077760000-PS-000.pdf](#)  
[2077760000-TS-000.pdf](#)

## Product Environment Compliance

### Compliance

GADSL/IMDS	Not Relevant
China RoHS	
EU ELV	Not Relevant
Low-Halogen Status	Not Low-Halogen per IEC 61249-2-21
REACH SVHC	Not Contained per D(2023)8585-DC (23 Jan 2024)
EU RoHS	Compliant per EU 2015/863

Multiple Part Product Compliance Statements  
- Eu RoHS  
- REACH SVHC  
- Low-Halogen

## Multiple Part Industry Compliance Documents

- IPC 1752A Class C
- IPC 1752A Class D
- Molex Product Compliance Declaration
- IEC-62474
- chemSHERPA (xml)

## EU RoHS Certificate of Compliance

---

### Part Details

#### General

Status	Active
Category	Connector Housings
Series	207778
Description	Squba 3.6 Sealed Plug Assembly, 3.60mm Pitch, 4 Circuits, Single Row, Glow-Wire Capable, with Clipslot, Key B, Natural, UL1007/UL1061 Compatible
Application	Power, Signal, Wire-to-Wire
Product Name	Squba
UPC	196823171468

#### Agency

UL	E29179
----	--------

#### Physical

Circuits (maximum)	4
Color - Resin	Natural
Flammability	94V-0
Gender	Plug
Glow-Wire Capable	Yes
Keying to Mating Part	None
Lock to Mating Part	Yes
Material - Resin	Nylon
Net Weight	5.996/g
Number of Rows	1
Packaging Type	Bag

Panel Mount	Yes
Pitch - Mating Interface	3.60mm
Pitch - Termination Interface	3.60mm
Polarized to Mating Part	Yes
Temperature Range - Operating	-40° to +105°C

---

## Mates With / Use With

### Mates with Part(s)

Description	Part Number
Squba 3.6 Sealed Receptacle Assembly, 3.60mm Pitch, 4 Circuits, Single Row, Glow-Wire Capable, Key B, Natural, UL1007/UL1061 Compatible	<u>2077820204</u>

### Use with Part(s)

Description	Part Number
Squba 3.6 Plug Terminal, Matte Tin Plating, UL1007/UL1061 Compatible, 16 AWG, Reel	<u>2077760001</u>
Squba 3.6 Plug Terminal, Matte Tin Plating, UL1007/UL1061 Compatible, 20-18 AWG, Reel	<u>2077760002</u>
Squba Weather Cap for 8 or 4 Circuit Plug Housing	<u>2204230008</u>