

## Features

- Excellent electrical connection
- Reduces short circuits
- Colour coded insulation for easy size identification
- Insulated for reduced leakage, creepage and gas intrusion
- Tin plated copper for excellent conductivity

## RS PRO 1000 Piece Insulated Ferrules Kit

RS Stock No.: 0457180



RS Professionally Approved Products bring to you professional quality parts across all product categories. Our product range has been tested by engineers and provides a comparable quality to the leading brands without paying a premium price.

## Product Description

From RS PRO a handy crimp terminal kit containing an assortment of 1000 high-quality colour coded insulated cord end/ ferrules. These reliable wire ferrules ensure that you have a positive connection when connecting wires to terminal blocks and captive terminals. This insulated crimp terminal kit is supplied in a sturdy plastic box with convenient compartments for ease of terminal selection. An integrated carrying handle makes this kit easy to carry around and ensures you are equipped with all the necessary crimp terminal connector sizes when it comes to terminating wire or cables wherever you are working.

### With a Crimping Tool

Crimping pre-insulated terminals with a wire size range of 0.5-10 mm<sup>2</sup>.

## Electrical Specifications

Maximum Electrical Rating	105°C 600V Max.
Maximum Electrical Current	22 AWG: 9A 20 AWG: 12A 18 AWG: 17A 16 AWG: 18A 14 AWG: 30A 12 AWG: 35A 10 AWG: 50A

## Classification

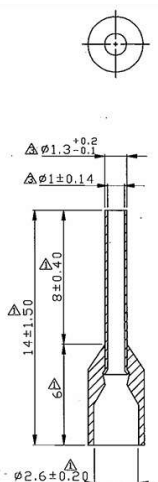
eCl@ss Version	
UNSPSC Version	

## Approvals

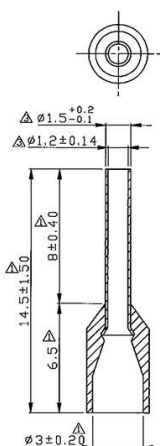
Compliance/Certifications	RoHS/ REACH
Declarations	

## Products Contents

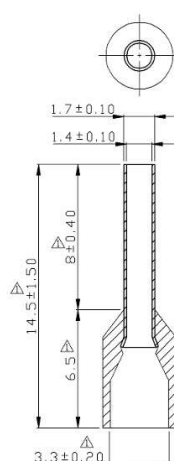
	Wire Size	Colour	Quantity	PIN LENGTH	PIN DIA.	OVERALL LENGTH	Replacement Stock Number
1	0.5 mm2	White	200	8 mm	1.3 mm	14.0 mm	<a href="#">458-689</a>
2	0.75 mm2	Blue	200	8 mm	1.5 mm	14.5 mm	<a href="#">458-695</a>
3	1.0 mm2	Red	200	8 mm	1.7 mm	14.5 mm	<a href="#">458-702</a>
4	1.5 mm2	Black	200	8 mm	2.0 mm	14.5 mm	<a href="#">458-718</a>
5	2.5 mm2	Grey	100	8 mm	2.5 mm	15.0 mm	<a href="#">458-724</a>
6	4.0 mm2	Orange	50	12 mm	3.2 mm	20.0 mm	<a href="#">458-730</a>
7	6.0 mm2	Green	30	12 mm	3.9 mm	20.0 mm	<a href="#">458-897</a>
8	10.0 mm2	Brown	20	12 mm	4.9 mm	22.0 mm	<a href="#">157-1244</a>
9	0.75 to 10 mm2	Crimping pliers	1				
			1,001				



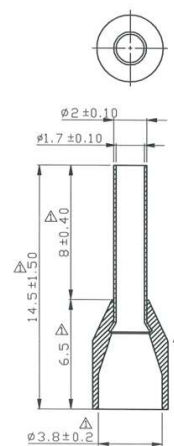
458-689



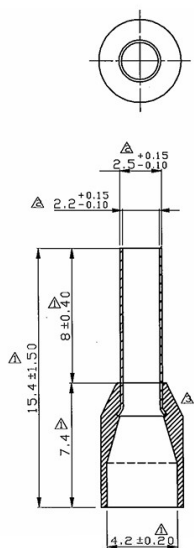
458-695



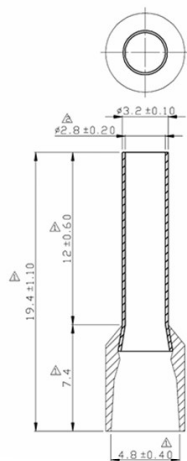
458-702



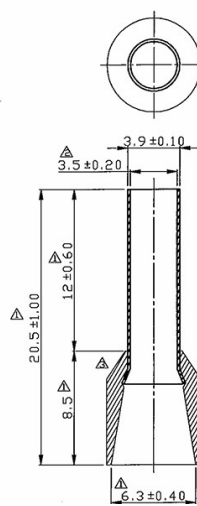
458-718



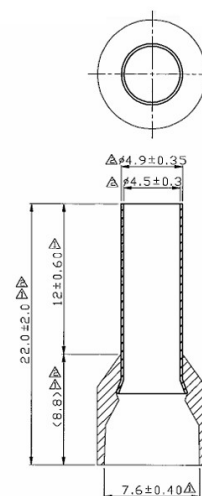
458-724



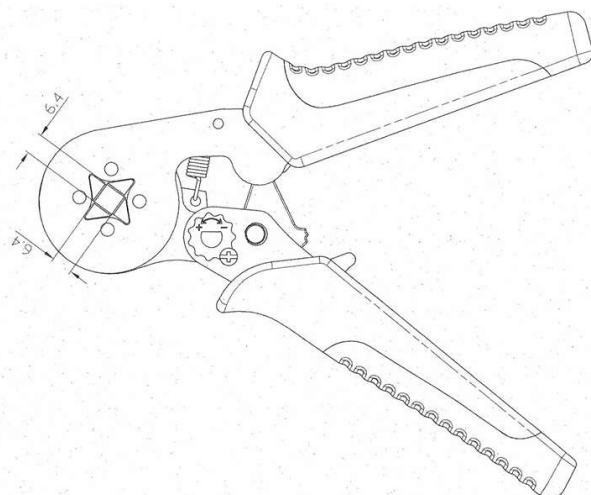
458-730



458-897



157-1244





458-689



458-695



458-702



458-718



458-724



458-730



458-897



157-1244

