

1342356

<https://www.phoenixcontact.com/in/products/1342356>

Please be informed that the data shown in this PDF document is generated from our online catalog. Please find the complete data in the user documentation. Our general terms of use for downloads are valid.



DIN rail housing, with front connection for DIN rail mounting, color: light gray (similar RAL 7035), width: 37.89 mm, height: 124.3 mm, depth: 76.5 mm, incl. 2 front connection terminal blocks, 4-pos., Push-in, for 2.5 mm², nominal current: 8 A, 300 V, 2 RJ45 jacks, PCB surface: 10300 mm²

Your advantages

- Easy, tool-free mounting
- Optional DIN rail connector for easy module-to-module communication
- Lock and Release principle for automatic latching and intuitive release of the front connection plug
- Plastic in accordance with UL94 V0: for more rigorous flammability requirements
- Plug-in front connection technology

Commercial data

Item number	1342356
Packing unit	1 pc
Minimum order quantity	1 pc
Sales key	*****
Product key	ACHEBK
GTIN	4063151652265
Weight per piece (including packing)	94 g
Weight per piece (excluding packing)	88 g
Customs tariff number	85369010
Country of origin	DE

ME-IO 37,6-KIT-10U-2RJ45-TBUS-7035 - Housing set



1342356

<https://www.phoenixcontact.com/in/products/1342356>

Set consists of

ME-IO 37,6 LB 10U TBUS 7035 - Mounting base housing

2202618

<https://www.phoenixcontact.com/in/products/2202618>



DIN rail housing, Lower housing part with metal foot catch, with vents, width: 37.89 mm, height: 120.6 mm, depth: 64.3 mm, color: light gray (similar RAL 7035), cross connection: DIN rail connector (optional), number of positions cross connector: 5 or 8

HSC-LR 3U KIT 2003 - Locking

2201797

<https://www.phoenixcontact.com/in/products/2201797>



DIN rail housing, 3U, Lock and Release system, width: 16.1 mm, height: 45.95 mm, depth: 8.8 mm, color: orange (similar RAL 2003)

ME-IO 37,6-KIT-10U-2RJ45-TBUS-7035 - Housing set



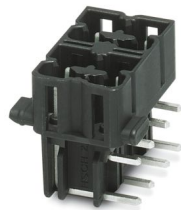
1342356

<https://www.phoenixcontact.com/in/products/1342356>

HSCH 2,5-2U/ 8 9005 - PCB header

2201789

<https://www.phoenixcontact.com/in/products/2201789>



PCB headers, nominal cross section: 2.5 mm², color: black, nominal current: 8 A, rated voltage (III/2): 320 V, contact surface: Sn, contact connection type: Pin, number of potentials: 8, number of rows: 2, number of positions: 8, number of connections: 8, product range: HSCH 2,5/..-G, pitch: 5 mm, mounting: Wave soldering, pin layout: Linear pinning, solder pin [P]: 3.8 mm, number of solder pins per potential: 1, plug-in system: HSC 2,5, Pin connector pattern alignment: Standard, locking: without, mounting method: without, type of packaging: packed in cardboard

HSCP-SP 2,5-1U4-7035 - PCB connector

2201780

<https://www.phoenixcontact.com/in/products/2201780>



PCB connector, nominal cross section: 2.5 mm², color: light gray, nominal current: 8 A, rated voltage (III/2): 320 V, contact surface: Sn, contact connection type: Socket, number of potentials: 4, number of rows: 2, number of positions: 4, number of connections: 4, product range: HSCP-SP 2,5-..., pitch: 5 mm, connection method: Push-in spring connection, conductor/PCB connection direction: 0 °, locking clip: - Locking clip, plug-in system: HSC 2,5, locking: without, mounting method: without, type of packaging: packed in cardboard, Color of the spring lever: orange

ME-IO 37,6-KIT-10U-2RJ45-TBUS-7035 - Housing set



1342356

<https://www.phoenixcontact.com/in/products/1342356>

CUC-SP-J1ST-A/R4LB-SMD - RJ45 PCB connector

1149874

<https://www.phoenixcontact.com/in/products/1149874>



RJ45 PCB connector, degree of protection: IP20, number of positions: 8, 10 Gbps, material: Metal, connection method: SMD reflow

ME-IO 18,8 LC 8U 2RJ45 7035 - Housing cover

1224119

<https://www.phoenixcontact.com/in/products/1224119>



DIN rail housing, 8U L-design with function cutout for 2x RJ45, Housing cover, width: 20.94 mm, height: 114.1 mm, depth: 30.1 mm, color: light gray (similar RAL 7035)

ME-IO 37,6-KIT-10U-2RJ45-TBUS-7035 - Housing set



1342356

<https://www.phoenixcontact.com/in/products/1342356>

ME-IO 18,8 C 10U 7035 - Housing cover

2202630

<https://www.phoenixcontact.com/in/products/2202630>



DIN rail housing, 10U, Housing cover, width: 18.9 mm, height: 109.8 mm, depth: 26 mm, color: light gray (similar RAL 7035)

Technical data

Notes

Recommendation	Material of contact pads for bus connector, galvanic gold (hard gold)
Recommendation	Material of contact pads for bus connector, galvanic gold (hard gold)
General	The PCB surface specification is for orientation purposes and is based on a basic PCB. The housing can also accommodate several PCBs.

Product properties

Product type	Stackable housing set
Housing type	DIN rail housing
Housing series	ME-IO
Number of positions	8
Max. number of positions	8 (pitch: 5 mm)
Type	with front connection for DIN rail mounting incl. 2 front connection terminal blocks, 4-pos., Push-in, for 2.5 mm ² , nominal current: 8 A, 300 V, 2 RJ45 jacks
Ventilation openings present	yes

Connection data

Connection method	Push-in spring connection
-------------------	---------------------------

Dimensions

Width	37.89 mm
Height	124.3 mm
Depth	76.5 mm
Depth from top edge of DIN rail	70 mm

PCB design

PCB thickness	1.4 mm ... 1.8 mm
---------------	-------------------

Material specifications

Color (Housing)	light gray (RAL 7035)
Color (Actuating element)	orange (RAL 2003)
Flammability rating according to UL 94	V0
Housing material	PA
Surface characteristics	untreated

Environmental and real-life conditions

Ambient conditions

Max. IP code to attain	IP20
Ambient temperature (operation)	-40 °C ... 105 °C (depending on power dissipation)

ME-IO 37,6-KIT-10U-2RJ45-TBUS-7035 - Housing set



1342356

<https://www.phoenixcontact.com/in/products/1342356>

Ambient temperature (storage/transport)	-40 °C ... 55 °C
Ambient temperature (assembly)	-5 °C ... 100 °C
Relative humidity (storage/transport)	max. 80 %

PCB data

Number of PCB holders	2
Type of PCB mount	Latching
Total PCB surface	10300 mm ²
Thickness of the PCB	1.4 mm ... 1.8 mm

Mounting

Mounting type	DIN rail mounting
---------------	-------------------

Packaging specifications

Type of packaging	packed in cardboard
Outer packaging type	Carton

ME-IO 37,6-KIT-10U-2RJ45-TBUS-7035 - Housing set



1342356

<https://www.phoenixcontact.com/in/products/1342356>

Classifications

ECLASS

ECLASS-11.0	27182702
ECLASS-13.0	27190301

ETIM

ETIM 9.0	EC001031
----------	----------

ME-IO 37,6-KIT-10U-2RJ45-TBUS-7035 - Housing set



1342356

<https://www.phoenixcontact.com/in/products/1342356>

Environmental product compliance

EU RoHS

Fulfills EU RoHS substance requirements	Yes, No exemptions
---	--------------------

China RoHS

Environment friendly use period (EFUP)	EFUP-E
	No hazardous substances above the limits

EU REACH SVHC

REACH candidate substance (CAS No.)	No substance above 0.1 wt%
-------------------------------------	----------------------------

Phoenix Contact 2025 © - all rights reserved
<https://www.phoenixcontact.com>

PHOENIX CONTACT (I) Pvt. Ltd.
A-58/2, Okhla Industrial Area, Phase - II, New Delhi-110 020

+91.1275.71420
info@phoenixcontact.co.in