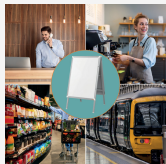
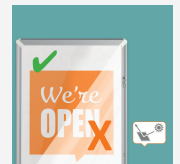
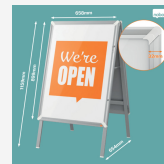
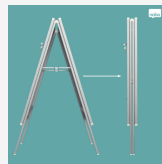
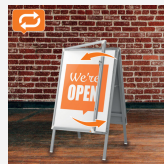
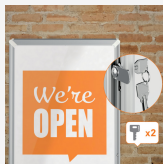




Nobo Premium Plus Lockable A1 A-Frame Pavement Sign

This lockable A1 A-frame pavement sign is perfect for securely displaying notices, posters, advertisements and important information with confidence. Secured with a key, it protects your documents from theft and tampering - making it ideal for store fronts, on pavements, or in high traffic areas. Bordered by a modern aluminium 32mm trim, the A-board sign features stylish corner caps for a sleek and stylish look - perfect for any environment. The hinged front-opening door allows for easy document changes while maintaining security when locked, ideal for both temporary or permanent displays. The poster stand features a double sided display that maximises visibility, allowing your message to be seen from both directions and a support bar for additional stability. Lightweight and portable, the A1 pavement sign is collapsible ensuring quick and convenient storage, while the anti-glare polypropylene front cover protects your documents from dirt and moisture while keeping it clearly visible. The non-reflective surface is also easy to wipe clean, ensuring your message always looks its best. A1 poster frame size. Be clear with Nobo.



Attributes

- Free standing A1 pavement sign ideal for storefronts, on pavements, offices, hospitality and other environments where security is essential.
- Built for maximum security, this key-locked frame keeps your documents safe from theft, tampering, and unauthorised access. (2 keys included)
- Modern aluminium 32mm frame with stylish corner caps for a sleek finish - perfect for any environment.
- Quick and easy poster change for temporary and permanent documents with its hinged door design.
- Double sided display ensuring maximum visibility, with a lightweight, portable, collapsible design that's simple to store.
- Anti-scratch feet and support bar allows for additional stability.
- Polypropylene anti-glare cover ensures clear and stand out communication and protection from dirt and moisture.
- Create your own free downloadable signs by visiting the Nobo Sign Maker website that has over 100 templates

Specifications

Number	1915742
Colour	silver
Dimensions (W x H x D)	658 x 1159 x 654 mm
Weight	10900 g
Pallet quantity	0
EAN code	5028252657310