

Features

- M18 short housing
- Sensitivity adjustment via teach button or IO-Link
- IO-Link
- Excellent black/white behavior
- Immunity to mutual interferences

RS PRO Photoelectric Sensor

RS Stock No.: 0360235



RS PRO is the own brand of RS. The RS PRO Seal of Approval is your assurance of professional quality, a guarantee that every part is rigorously tested, inspected, and audited against demanding standards. Making RS PRO the Smart Choice for our customers.

Product Description

- M18 short housing
- Sensitivity adjustment via teach button or IO-Link
- IO-Link
- Excellent black/white behavior
- Immunity to mutual interferences

General Specifications

Detection Type	Background Suppression
Sensing/Detection Range	10 ... 250 mm
Operating Distance	15 ... 210 mm
Standard Sensing Object	Object with 90% reflectance (standard white paper)
Light Source	Pinpoint LED
Diameter of the Light Spot	Ø 6 mm (100 mm)/Ø 10 mm (250 mm)
Sensing Distance Adjustment	30 ... 250 mm, teach or IO-Link
Output Type	PNP / Output 1: Light-on/IO-Link, Output 2: Dark-on
Response Time	≤ 700 us (normal)/≤ 1.1 ms/≤ 500 us
Connection/Terminal Type	4-pin M12
Indicator	LED
Interface	IO-Link
Minimum Operating Temperature	-25°C
Maximum Operating Temperature	+65°C

Electrical Specifications

Operating Supply Voltage	10 ... 30 VDC
Current Consumption	≤ 200 mA
Voltage Drop	≤ (UB-2.0 V)/approx. 0 V
Maximum Switching Frequency	≤ 1 kHz
Reverse Polarity Protection	YES
Overload Protection	YES
Short Circuit Protection	YES

Mechanical Specifications

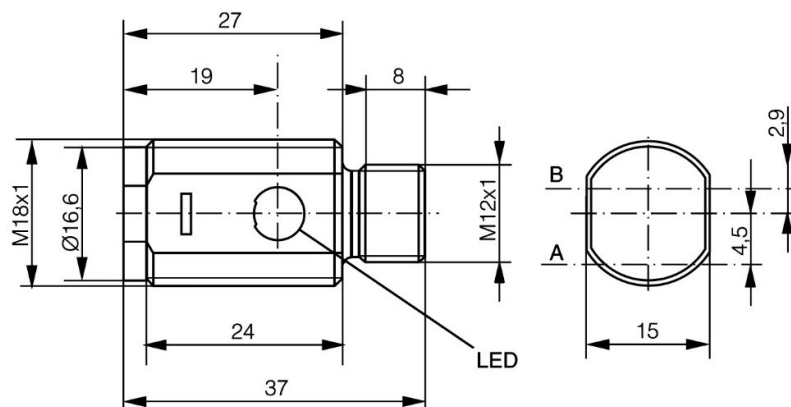
Body Style	Barrel
Mounting Type	Screw
Housing Material	Stainless steel
Lens/Face Material	PMMA
Dimensions	M18 x 37 mm
Width	15 mm
Length	37 mm
Depth	M18 mm
Weight	14 g
Shock Resistance	IEC 60947-5-2
Vibration Resistance	IEC 60947-5-2

Protection Category

IP Rating	IP67
-----------	------

Approvals

Compliance/Certifications	CE / CULus
---------------------------	------------



CURVES

