

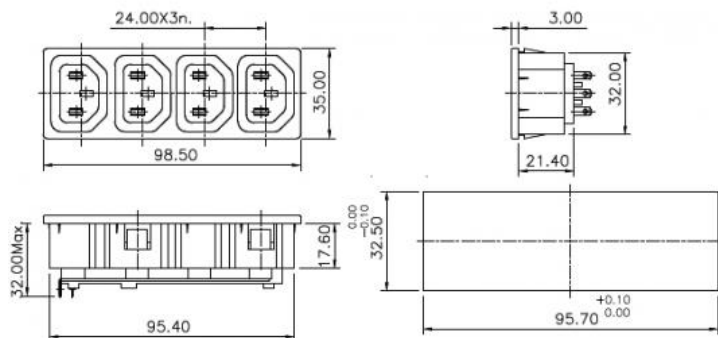
Datasheet

IEC Outlet-C13

RS Stock number 811-7197



Unit: mm



Specifications:

Mounting Style:	Panel, Snap-type
Terminals:	Solder Type/Fast-on 2.8 x 4.8
Reference Standard:	IEC 60320-1
Permissible Temp with/without load:	0°C to +70°C
Permissible Temp for Soldering:	270°C for 5 sec. max.
Panel Thickness:	Standard : 1.5(C), Other (On Request)
Material – Terminals:	Copper alloy, Tin plated
Material – Body:	Nylon – 6 GF 20%, V2
Insulation Resistance at 500 V DC:	1000MΩ min.
H.V. Break Down Test:	2KVAC for 1 minute
Contact Resistance (initial):	10m Ω max.
Current & Voltage Rating:	10A (VDE), 20A (UL, CSA) 250VAC