

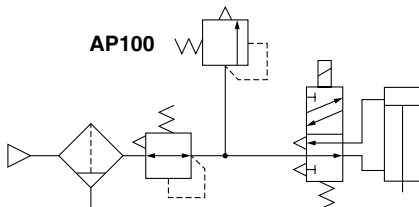
# Pressure Control Valve AP100

Pressure greater than the set pressure is released into the atmosphere, which allows pressure in the pipe to be maintained.



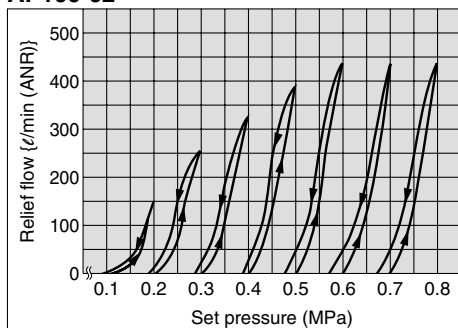
## Application Example

Cylinder cushion



## Relief Characteristics

AP100-02



Note) The graph above shows the relief flow when the set pressure rises and falls from 0.1 MPa.

## Standard Specifications

Model	AP100
Port size	1/8, 1/4
Fluid	Air
Proof pressure	1.5 MPa
Max. operating pressure	1.0 MPa
Set pressure range	0.05 to 0.69 MPa
Ambient and fluid temperature	-5 to 60°C (No freezing)
Bracket	part no.: B21-1P
Mass (kg)	0.12

## How to Order

**AP100** — **01** —

- Pressure control valve**
- Thread type**

Symbol	Type
Nil	Rc
N	NPT
F	G
- Connection thread**

Symbol	Size
01	1/8
02	1/4
- Special specifications**

Symbol	Specifications
Nil	—
X201	Set pressure range 0.02 to 0.2 MPa
- Accessory**

Symbol	Description
Nil	—
B	With bracket

## Precautions

Do not use this product as a safety valve.

[ Definition of safety valves (JIS)  
Valves used for ensuring pressure capacity and piping safety. ]

## Dimensions

