

**CHARACTERISTICS**

**ELECTRICAL:**

INDUCTIVE LOAD: 5 AMPS AT 28 VCD  
 ELECTRICAL LIFE: 25,000 CYCLES AT FULL LOAD

**MECHANICAL:**

TOTAL TRAVEL: .085 ± .015  
 OPERATING FORCE: 4.0 ± 1.0 LBS  
 RESET FORCE: 1.0 LB MIN.  
 MECHANICAL LIFE: 50,000 CYCLES

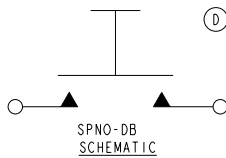
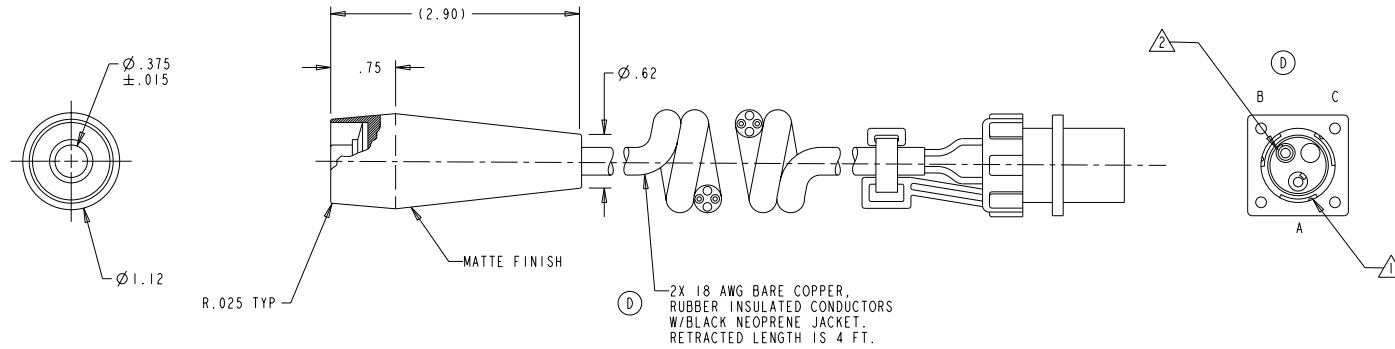
**PHYSICAL:**

HOUSING: BLACK THERMOPLASTIC  
 BUTTON: RED THERMOPLASTIC  
 WIRING CAVITY, EPOXY BACKFILLED

**NOTES:**

- 1 DEUTSCH CONNECTOR: HD10-3-96P  
 CALMP: HD18-003  
 CONTACTS: 0460-202-16141  
 SEAL PLUG: 114017
- 2 TERMINAL "C" IS A "DUMMY" WITH A SEAL PLUG  
 TERMINAL "B" IS A BLACK WIRE  
 TERMINAL "A" IS A WHITE WIRE

U2-096			
REV	OCN #	DATE	APR
A	893902	05 OCT 89	WN
B	901300	18 APR 90	TB
C	904204	05 NOV 90	TB
D	025231	07 DEC 04	DGK



UNLESS OTHERWISE SPECIFIED: DIMENSIONS ARE IN INCHES. TOLERANCES: .XX ±.03 .XXX ±.010 ANGLES ±2° DO NOT SCALE	<b>OTTO CONTROLS</b> DIVISION OF <b>OTTO ENGINEERING INC.</b> CARPENTERSVILLE, ILLINOIS USA		DESCRIPTION U2, PENDANT SWITCH		
	THIS DOCUMENT IS THE CONFIDENTIAL PROPERTY OF OTTO ENGINEERING, INC.. IT IS NOT TO BE USED IN ANY WAY DETRIMENTAL TO THE INTERESTS OF OTTO ENGINEERING, INC..	DRWN. JH CHKD. DGK APPD. SM	SIZE B	FSCM NO 21649	DRAWING NO. U2-096
MANUFACTURING SPC	WT.		THIRD ANGLE PROJECTION	Scale 1:2	Sheet 1 OF 1