

Manually Operated Forced Drain Valve *IN-24-8 Series*

- Used to shut off the cooling water and drain the residual water inside the piping.
- Mounting can be selected (R side or L side).
- It is possible to hold on the water side.

How to Order

IN-24-8-B **C** - **L** -

Thread type

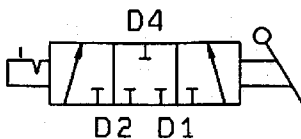
| | |
|-----|-----|
| Nil | Rc |
| N | NPT |

| | |
|----------|--|
| R | Water supply port is located on the right side when viewed from the switch side (front). |
| L | Water supply port is located on the left side when viewed from the switch side (front). |

Check valve (port on air IN side)

| | |
|----------|-------------------------------|
| Nil | Without check valve |
| C | With check valve (XT14-145-W) |

Symbol

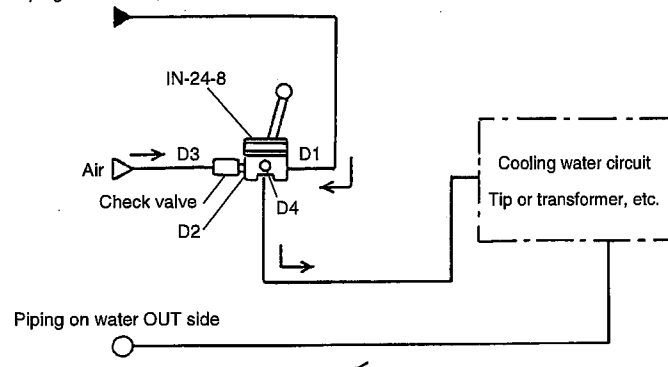


Specifications

| | |
|--------------------------------|--|
| Proof pressure | 1.5 MPa |
| Operating pressure range | 0.05 to 1 MPa |
| Fluid | Water/Air |
| Port size | D2/D3: 3/8, D1/D4: 3/4 |
| Effective area | 55 mm ² |
| Ambient and fluid temperatures | -5 to 60°C (No freezing) |
| Rated voltage | 250 VAC, 15 A, Contact: 1ab |
| Inductive load | 15 A, Motor load, NC 3 A, NO 1.5 A |
| Non-inductive load | Load resistance, 15 A, Light load, NC 2.5 A, NO 1.25 A |

Application Example

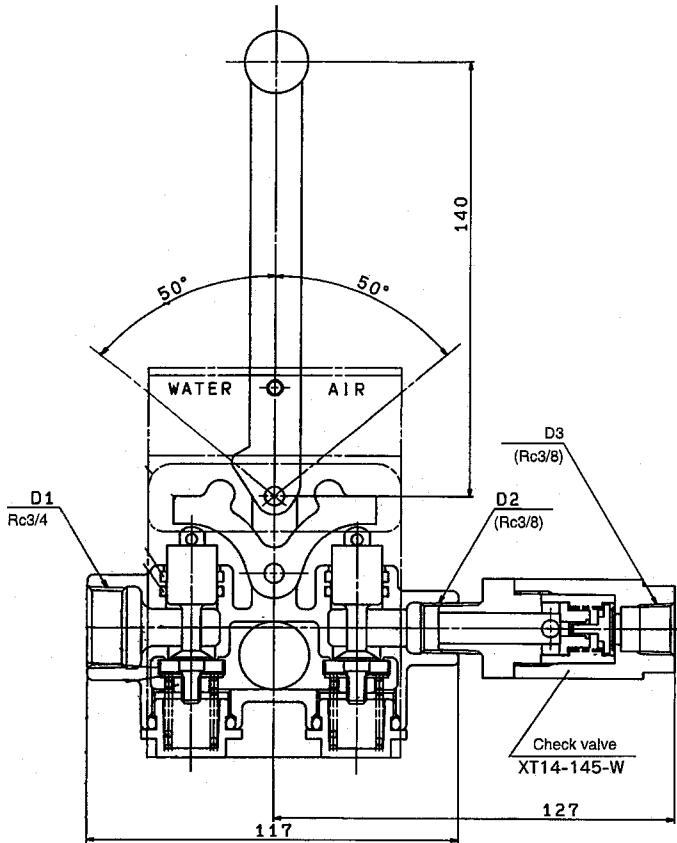
Piping on water IN side



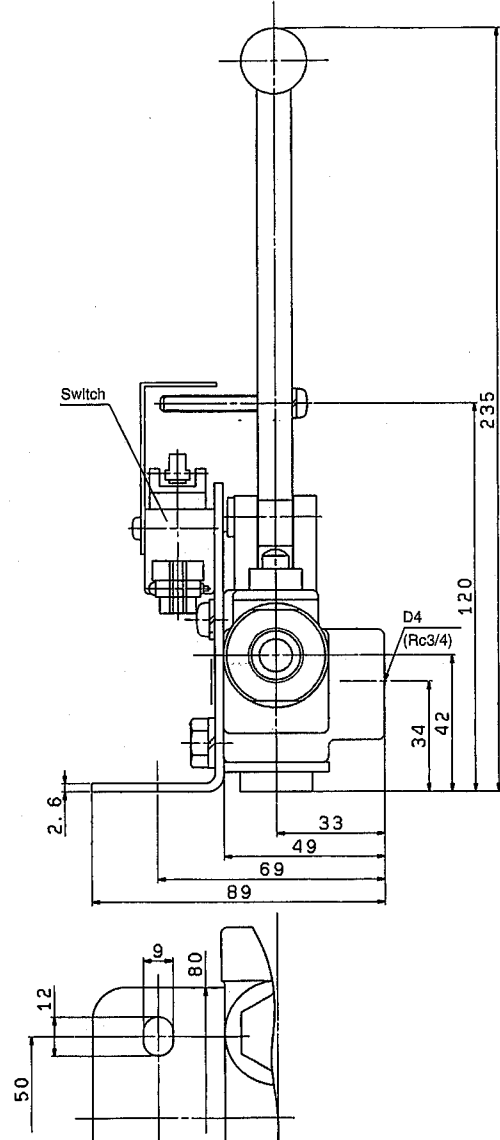
Manually Operated Forced Drain Valve **IN-24-8 Series**

Dimensions

IN-24-8-BC-L (Dimensions when check valve is mounted.)



* For the IN-24-8-BC-R, the water supply port D1 (Rc 3/4) is located on the opposite side (right side).



How to Operate

| Lever position | Valve for water | Valve for air |
|----------------|-----------------|---------------|
| WATER | Open | Close |
| Neutral | Close | Close |
| AIR* | Close | Open |

* No hold mechanism is provided on the AIR side. It is possible to hold on the WATER side.

⚠ Specific Product Precautions

⚠ Caution

- 1) If the lever is laid down toward the AIR side accidentally when there is no air pressure, the water enters the air piping from the OUT side, causing a serious trouble. Therefore, it is recommended to mount the check valve (XT14-145-W) on the air IN side.
- 2) When "With check valve" type is selected, the check valve (XT14-145-W) is included with the product. Screw this check valve into the body before use.