

# BC 107,6-SKT-U11-7035+4SPTA10 - Housing set



1456991

<https://www.phoenixcontact.com/gb/products/1456991>

Please be informed that the data shown in this PDF document is generated from our online catalog. Please find the complete data in the user documentation. Our general terms of use for downloads are valid.



DIN rail housing for use in distribution boards in accordance with DIN 43880, for mounting on a DIN rail, with transparent hinged cover, color: black (similar RAL 9005), width: 107.6 mm, height: 89.7 mm, depth: 60.7 mm, PCB surface: 8300 mm<sup>2</sup>

## Commercial data

Item number	1456991
Packing unit	1 pc
Minimum order quantity	1 pc
Sales key	ACHBAK
Product key	ACHBAK
GTIN	4063151852047
Weight per piece (including packing)	142.3 g
Weight per piece (excluding packing)	22.22 g
Customs tariff number	85369010
Country of origin	DE

# BC 107,6-SKT-U11-7035+4SPTA10 - Housing set



1456991

<https://www.phoenixcontact.com/gb/products/1456991>

## Set consists of

### BC 107,6 UT HBUS BK - Mounting base housing

2896270

<https://www.phoenixcontact.com/gb/products/2896270>



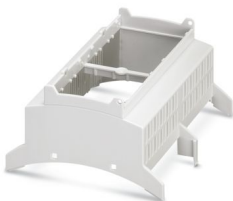
DIN rail housing for use in distribution boards in accordance with DIN 43880, Lower housing part with base latch, width: 107.6 mm, height: 89.7 mm, depth: 48.9 mm, color: black (similar RAL 9005), cross connection: DIN rail connector (optional), number of positions cross connector: 16

---

### BC 107,6 OT U11 KMGY - Upper housing part

2896076

<https://www.phoenixcontact.com/gb/products/2896076>



DIN rail housing for use in distribution boards in accordance with DIN 43880, Upper housing part (U11) with vents, Installation depth connection technology: 11.1 mm, width: 107.6 mm, height: 89.7 mm, depth: 54.85 mm, color: light gray (similar RAL 7035)

# BC 107,6-SKT-U11-7035+4SPTA10 - Housing set



1456991

<https://www.phoenixcontact.com/gb/products/1456991>

## BC 107,6 DKL S TRANS - Housing cover

2896131

<https://www.phoenixcontact.com/gb/products/2896131>



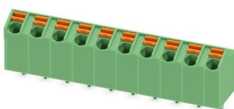
DIN rail housing for use in distribution boards in accordance with DIN 43880, transparent hinged cover, can be sealed, including insertion plate, width: 107.6 mm, height: 45 mm, depth: 8 mm, color: light gray (similar RAL 7035)

---

## SPTA 1/10-5,0 - PCB terminal block

1752298

<https://www.phoenixcontact.com/gb/products/1752298>



Printed circuit board terminal, nominal current: 9 A, rated voltage (III/2): 320 V, nominal cross section: 1 mm<sup>2</sup>, number of potentials: 10, number of rows: 1, number of positions per row: 10, product range: SPTA 1/, pitch: 5 mm, connection method: Push-in spring connection, mounting: Wave soldering, conductor/PCB connection direction: 65 °, color: green, Pin layout: Linear pinning, Solder pin [P]: 3.5 mm, number of solder pins per potential: 1, type of packaging: packed in cardboard

# BC 107,6-SKT-U11-7035+4SPTA10 - Housing set



1456991

<https://www.phoenixcontact.com/gb/products/1456991>

## Technical data

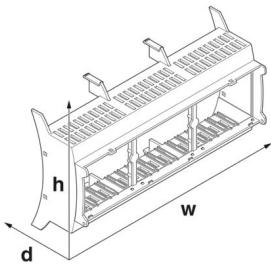
### Notes

Assembly note	Please observe the assembly instructions available in the download area.
General	The PCB surface specification is for orientation purposes and is based on a basic PCB. The housing can also accommodate several PCBs.

### Product properties

Product type	Stackable housing set
Housing type	DIN rail housing for use in distribution boards in accordance with DIN 43880
Housing series	BC
Product family	BC 107,6..
Type	for mounting on a DIN rail, with transparent hinged cover
Ventilation openings present	yes

### Dimensions

Dimensional drawing	
Width	107.6 mm
Height	89.7 mm
Depth	60.7 mm
Depth from top edge of DIN rail	54.7 mm
Horizontal pitch	6 Div.
Dimensions	81.54 mm x 107.3 mm (PCB dimensions)

### PCB design

PCB thickness	1.4 mm ... 1.8 mm
---------------	-------------------

### Material specifications

Color (Lower housing part)	black (RAL 9005)
Color (Upper housing part)	light gray (RAL 7035)
Color (Housing cover)	transparent
Flammability rating according to UL 94	V0
Insulating material	Polycarbonat
Housing material	PC

# BC 107,6-SKT-U11-7035+4SPTA10 - Housing set



1456991

<https://www.phoenixcontact.com/gb/products/1456991>

## Environmental and real-life conditions

### Ambient conditions

Max. IP code to attain	IP20
Ambient temperature (operation)	-40 °C ... 105 °C (depending on power dissipation)
Ambient temperature (storage/transport)	-40 °C ... 70 °C
Ambient temperature (assembly)	-5 °C ... 100 °C
Relative humidity (storage/transport)	95 %

### PCB data

Number of PCB holders	9
Type of PCB mount	Latching
Total PCB surface	8300 mm <sup>2</sup>
Thickness of the PCB	1.4 mm ... 1.8 mm

### Mounting

Mounting type	DIN rail mounting/panel mounting
---------------	----------------------------------

# BC 107,6-SKT-U11-7035+4SPTA10 - Housing set

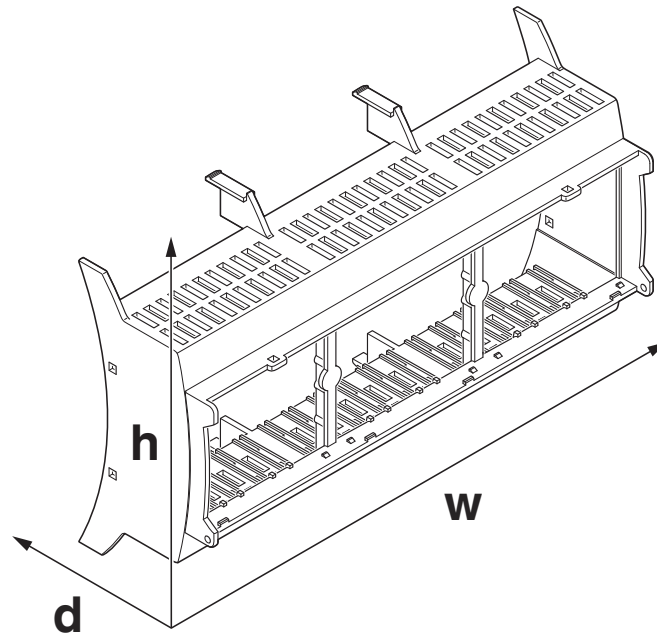
1456991

<https://www.phoenixcontact.com/gb/products/1456991>



## Drawings

Dimensional drawing



Schematic figure for illustrating the item dimensions. The figure is not of the desired product. For further details, refer to the product drawings in the "Downloads" tab.

# BC 107,6-SKT-U11-7035+4SPTA10 - Housing set



1456991

<https://www.phoenixcontact.com/gb/products/1456991>

## Classifications

### ECLASS

ECLASS-13.0	27190301
-------------	----------

### ETIM

ETIM 9.0	EC001031
----------	----------

# BC 107,6-SKT-U11-7035+4SPTA10 - Housing set



1456991

<https://www.phoenixcontact.com/gb/products/1456991>

## Environmental product compliance

### EU RoHS

Fulfills EU RoHS substance requirements	Yes, No exemptions
---	--------------------

### China RoHS

Environment friendly use period (EFUP)	EFUP-E
	No hazardous substances above the limits

### EU REACH SVHC

REACH candidate substance (CAS No.)	No substance above 0.1 wt%
-------------------------------------	----------------------------

Phoenix Contact 2025 © - all rights reserved  
<https://www.phoenixcontact.com>

PHOENIX CONTACT Ltd  
Halesfield 13, Telford  
Shropshire, TF7 4PG  
01952 681700  
[info@phoenixcontact.co.uk](mailto:info@phoenixcontact.co.uk)