



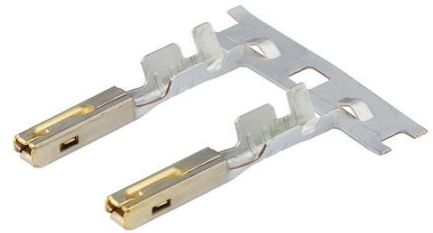
Part Number : [330013003](#)

Product Description : MX150 Female Terminal for Mat-Sealed Connectors, Gold Plating, 16-14 AWG, Left Reel Payoff

Series Number : 33001

Status : Active

Product Category : Crimp Terminals



Documents & Resources

Drawings

[330013003 sd.pdf](#)

[313025040-000.pdf](#)

Specifications

[AS-33012-002-001.pdf](#)

[AS-33012-002-CH-001.pdf](#)


[AS-33012-002-FR-001.pdf](#)

[PS-33012-002-001.pdf](#)

[TS-33001-002-001.pdf](#)

Product Environment Compliance

Compliance

GADSL/IMDS	Compliant with Exemption 44; 34; 33
China RoHS	 per SJ/T 11365-2006
EU ELV	Compliant per 2000/53/EC
Low-Halogen Status	Low-Halogen per IEC 61249-2-21
REACH SVHC	Not Contained per D(2025)4165-DC (25 June 2025)
EU RoHS	Compliant per EU 2015/863

Compliance Statements

- EU RoHS

- REACH SVHC
- Low-Halogen

Industry Documents

- IPC 1752A Class C
- IPC 1752A Class D
- Molex Product Compliance Declaration
- IEC-62474
- chemSHERPA (xml)

Substances of Interest

- PFAS

EU RoHS Certificate of Compliance

Additional Product Compliance Information

Part Details

General

Status	Active
Category	Crimp Terminals
Series	33001
Description	MX150 Female Terminal for Mat-Sealed Connectors, Gold Plating, 16-14 AWG, Left Reel Payoff
Application	Power, Wire-to-Board, Wire-to-Wire, Automotive
Comments	Left Reel Payoff, Small Polarization Rib
Product Name	MX150
UPC	822350084161

Electrical

Current - Maximum per Contact	Contact Molex
Voltage - Maximum	14V DC

Physical

Gender	Female
Grip Code	14
Material - Metal	High Performance Alloy (HPA)
Material - Plating Mating	Gold

Material - Plating Termination	Unplated
Net Weight	0.435/g
Packaging Type	Reel
Plating min - Mating	0.762µm
Plating min - Termination	2.540µm
Termination Interface Style	Crimp or Compression
Wire Insulation Diameter	2.70mm max.
Wire Size (AWG)	14, 16
Wire Size mm ²	1.25-2.00

Solder Process Data

Lead-Free Process Capability	N/A
------------------------------	-----

Mates With / Use With

Use with Part(s)

Description	Part Number
MX150 Mat-Sealed Dual Row Female Connector Assemblies	<u>33472</u>
MX150 Mat-Sealed Single Row Female Connector Assemblies	<u>33471</u>

Application Tooling

Global

Description	Part Number
Extraction Toolkit for MX150 Connectors	<u>2002220700</u>
FA2 Mechanical Feed Crimp Applicator for MX150 Mat Seal/ Unsealed Receptacle Terminals, 14 AWG, 16 AWG, 1.25mm ² and 1.50mm ²	<u>638082300</u>
FA2 Pneumatic Feed Applicator for MX150 Mat Seal/Unsealed Receptacle Terminals, 14 AWG, 16 AWG, 1.25mm ² and 1.50mm ²	<u>638082310</u>

FA2 Mechanical Feed Crimp Applicator for MX150 Mat Seal/ Unsealed Receptacle Terminals, 14 AWG, 1.25mm ² and 2.00mm ² Wire	<u>638088100</u>
FA2 Pneumatic Feed Crimp Applicator for MX150 Mat Seal Terminals, 14 AWG, 1.25mm ² and 2.00mm ² Wire	<u>638088110</u>
PremiumGrade Hand Crimp Tool for MX150 Female Terminals, 16-14 AWG	<u>638115900</u>
PremiumGrade Hand Crimp Tool for MX150 Female Terminals for 1.00mm ² and 1.50mm ² Metric Wires	<u>638116100</u>
Extraction Tool for MX150L, MX150, PT Bulb Socket, iGrid, SPOX, and Wire-to-Motor Terminals	<u>638131500</u>
FineAdjust Applicator for SRC Connector using MX150 Receptacle Terminals, 1.50mm ² wires	<u>639040600</u>
FineAdjust Applicator for SRC Connector using MX150 Receptacle Terminals, 2.00mm ² wires	<u>639040700</u>
ServiceGrade Hand Crimp Tool for MX150 Crimp Terminals, 22-14 AWG	<u>640160133</u>