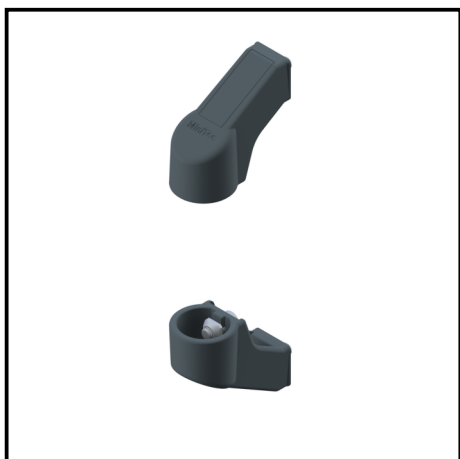


HANDLE GP KIT WITHOUT PROFILE

Article Nr. 21.2317/1

[See the product on the website](#) →



TECHN. DATA / ITEMS SUPPLIED

- Bracket ABS, grey
- Fastening material steel, galvanized
- Load max. 500 N
- Weight = 0.154 kg/piece

APPLICATIONS

- Doors and lids
- Carriage
- Railing

ASSEMBLY

- Attach bracket to handle profile
- Use the included fastening material to attach the profile to the profile grooves
- Recommended tightening torque: 10 Nm