

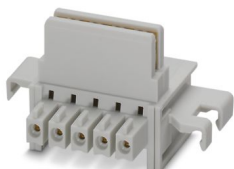
# ME 17,5 TBUS 1,5/ 5-ST-3,81 GY - DIN rail bus connectors



1090049

<https://www.phoenixcontact.com/gb/products/1090049>

Please be informed that the data shown in this PDF document is generated from our online catalog. Please find the complete data in the user documentation. Our general terms of use for downloads are valid.



DIN rail connector, color: gray, nominal current: 8 A (parallel contacts), rated voltage (III/2): 125 V, number of positions: 5, product range: TBUS5-17,5..., pitch: 3.81 mm, mounting: DIN rail mounting, locking: without, mounting method: without, type of packaging: packed in cardboard, Item with gold-plated contacts, bus connectors for connecting with electronics housings, 5 parallel contacts

## Your advantages

- Space-saving installation under the housing in the DIN rail
- Contact design enables electronics modules to be easily snapped on
- Power supply and communication without additional wiring
- Parallel and serial contacts for efficient signal and data transmission

## Commercial data

Item number	1090049
Packing unit	50 pc
Minimum order quantity	50 pc
Note	Made to order (non-returnable)
Sales key	ACHACA
Product key	ACHACA
GTIN	4055626898407
Weight per piece (including packing)	4.58 g
Weight per piece (excluding packing)	4.1 g
Customs tariff number	85366990
Country of origin	DE

# ME 17,5 TBUS 1,5/ 5-ST-3,81 GY - DIN rail bus connectors



1090049

<https://www.phoenixcontact.com/gb/products/1090049>

## Technical data

### Notes

Recommendation	Material of contact pads for bus connector, galvanic gold (hard gold)
----------------	---

### Product properties

Product type	DIN rail connector
Product family	TBUS5-17,5..
Number of positions	5
Pitch	3.81 mm

### Electrical properties

#### Properties

Nominal current $I_N$	8 A (parallel contacts)
Nominal voltage $U_N$	125 V
Contact resistance	4.4 mΩ
Rated surge voltage (III/3)	2.5 kV
Rated voltage (III/2)	125 V
Rated surge voltage (III/2)	2.5 kV
Rated voltage (II/2)	320 V
Rated surge voltage (II/2)	2.5 kV

### Material specifications

#### Material data - contact

Contact material	Cu alloy
Surface characteristics	gold-plated

#### Material data - housing

Color (Housing)	gray (7042)
Insulating material	PA
Insulating material group	I
CTI according to IEC 60112	600
Flammability rating according to UL 94	V0

#### material specifications - connector

Color ()	()
----------	----

### Dimensions

Pitch	3.81 mm
Width [w]	24.2 mm
Height [h]	36.3 mm
Length [l]	20.45 mm

# ME 17,5 TBUS 1,5/ 5-ST-3,81 GY - DIN rail bus connectors



1090049

<https://www.phoenixcontact.com/gb/products/1090049>

## Mounting

Mounting type	DIN rail mounting
---------------	-------------------

## Mechanical tests

### Insertion and withdrawal forces

Result	Test passed
No. of cycles	25
Insertion strength per pos. approx.	6 N
Withdraw strength per pos. approx.	5 N

### Contact holder in insert

Specification	IEC 60512-15-1:2008-05
Contact holder in insert Requirements >20 N	Test passed

### Polarization and coding

Specification	IEC 60512-13-5:2006-02
Result	Test passed

### Visual inspection

Specification	IEC 60512-1-1:2002-02
Result	Test passed

### Dimension check

Specification	IEC 60512-1-2:2002-02
Result	Test passed

## Environmental and real-life conditions

### Vibration test

Specification	IEC 60068-2-6:2007-12
Frequency	10 - 150 - 10 Hz
Sweep speed	1 octave/min
Amplitude	0.35 mm (10 Hz ... 60.1 Hz)
Acceleration	5g (60.1 Hz ... 500 Hz)
Test duration per axis	2.5 h
Test directions	X-, Y- and Z-axis (pos. and neg.)

### Durability test

Specification	IEC 60512-9-1:2010-03
Impulse withstand voltage at sea level	2.95 kV
Contact resistance R <sub>1</sub>	4.4 mΩ
Contact resistance R <sub>2</sub>	4.5 mΩ
Insertion/withdrawal cycles	25

### Climatic test

# ME 17,5 TBUS 1,5/ 5-ST-3,81 GY - DIN rail bus connectors



1090049

<https://www.phoenixcontact.com/gb/products/1090049>

Specification	ISO 6988:1985-02
Corrosive stress	0.2 dm <sup>3</sup> SO <sub>2</sub> on 300 dm <sup>3</sup> /40 °C/1 cycle
Thermal stress	100 °C/168 h
Power-frequency withstand voltage	1.39 kV

## Glow-wire test

Specification	IEC 60695-2-10:2013-04
Temperature	850 °C
Time of exposure	30 s

## Shocks

Specification	IEC 60068-2-27:2008-02
Pulse shape	Semi-sinusoidal
Acceleration	15g
Shock duration	11 ms
Test directions	X-, Y- and Z-axis (pos. and neg.)

## Ambient conditions

Ambient temperature (operation)	-40 °C ... 105 °C (dependent on the derating curve)
Ambient temperature (storage/transport)	-40 °C ... 55 °C
Relative humidity (storage/transport)	30 % ... 70 %
Ambient temperature (assembly)	-5 °C ... 100 °C

## Electrical tests

### Thermal test | Test group C

Specification	IEC 60512-5-1:2002-02
Tested number of positions	5

### Air clearances and creepage distances |

Specification	IEC 60664-1:2007-04
Insulating material group	I
Rated surge voltage (III/3)	2.5 kV
minimum clearance value - non-homogenous field (III/3)	1.5 mm
minimum creepage distance (III/3)	1.9 mm
Rated insulation voltage (III/2)	125 V
Rated surge voltage (III/2)	2.5 kV
minimum clearance value - non-homogenous field (III/2)	1.5 mm
minimum creepage distance (III/2)	0.75 mm
Rated insulation voltage (II/2)	320 V
Rated surge voltage (II/2)	2.5 kV
minimum clearance value - non-homogenous field (II/2)	1.5 mm
minimum creepage distance (II/2)	1.6 mm

## Packaging specifications

Type of packaging	packed in cardboard
-------------------	---------------------

# ME 17,5 TBUS 1,5/ 5-ST-3,81 GY - DIN rail bus connectors



1090049

<https://www.phoenixcontact.com/gb/products/1090049>

Outer packaging type	Carton
----------------------	--------

# ME 17,5 TBUS 1,5/ 5-ST-3,81 GY - DIN rail bus connectors

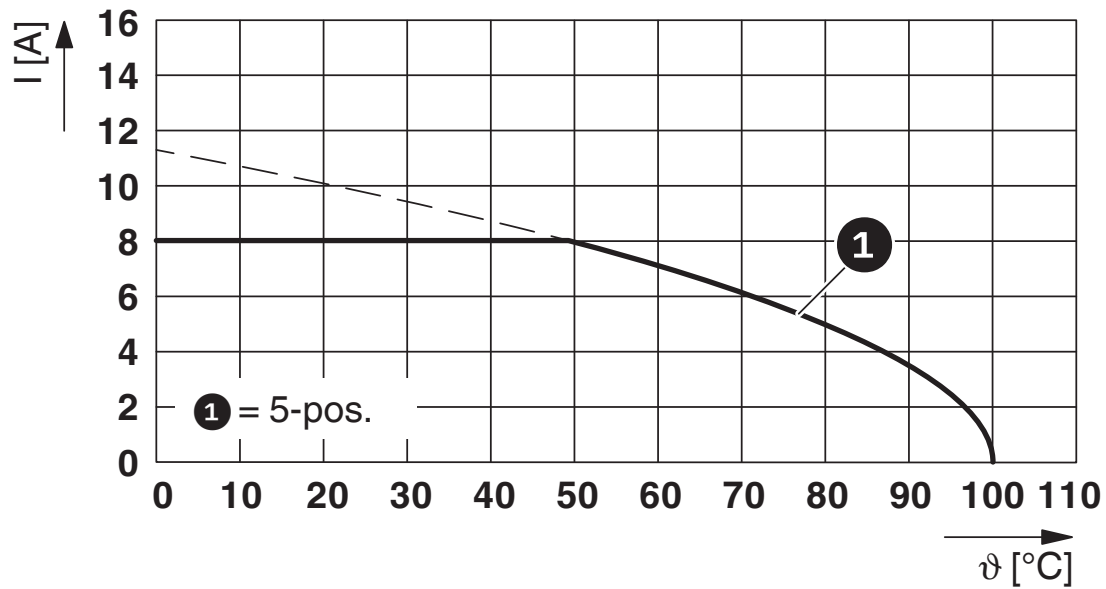


1090049

<https://www.phoenixcontact.com/gb/products/1090049>

## Drawings

Diagram



Type: TBUS5...

# ME 17,5 TBUS 1,5/ 5-ST-3,81 GY - DIN rail bus connectors



1090049

<https://www.phoenixcontact.com/gb/products/1090049>

## Approvals

🔗 To download certificates, visit the product detail page: <https://www.phoenixcontact.com/gb/products/1090049>



**UL Recognized**

Approval ID: E240868

# ME 17,5 TBUS 1,5/ 5-ST-3,81 GY - DIN rail bus connectors



1090049  
<https://www.phoenixcontact.com/gb/products/1090049>

## Classifications

### ECLASS

ECLASS-13.0	27460201
-------------	----------

### ETIM

ETIM 9.0	EC002637
----------	----------

### UNSPSC

UNSPSC 21.0	39121400
-------------	----------



# ME 17,5 TBUS 1,5/ 5-ST-3,81 GY - DIN rail bus connectors



1090049

<https://www.phoenixcontact.com/gb/products/1090049>

## Environmental product compliance

### EU RoHS

Fulfills EU RoHS substance requirements	Yes, No exemptions
---	--------------------

### China RoHS

Environment friendly use period (EFUP)	EFUP-E
	No hazardous substances above the limits

### EU REACH SVHC

REACH candidate substance (CAS No.)	No substance above 0.1 wt%
-------------------------------------	----------------------------

Phoenix Contact 2025 © - all rights reserved  
<https://www.phoenixcontact.com>

PHOENIX CONTACT Ltd  
Halesfield 13, Telford  
Shropshire, TF7 4PG  
01952 681700  
[info@phoenixcontact.co.uk](mailto:info@phoenixcontact.co.uk)