

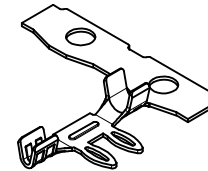
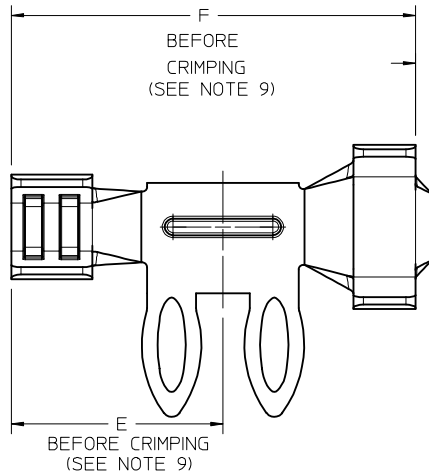
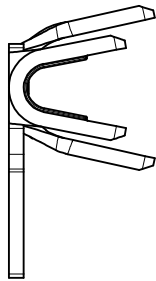
| 10 | 9 | 8 | 7 | 6 | 5 | 4 | 3 | 2 | 1 | | |
|-----------------|----------|---------|-----------|-------------------------------|-----------------------------------|------|------|------|------|------|------|
| MATERIAL NUMBER | MATERIAL | PLATING | COND SIZE | INS DIA RANGE (SEE NOTE 8) | MAX PCB THICKNESS (SEE NOTE 8) | A | B | C | D | E | F |
| 172249-0100 | BRASS | RMT | 14-16 AWG | 2.40-2.79 (UL 1007) | 1.57 / .062" | 3.40 | 3.55 | 4.20 | 3.65 | 4.33 | 8.27 |
| 172249-0200 | BRASS | RMT | 18-20 AWG | 1.80-2.10 (UL 1007) | 1.57 / .062" | 2.14 | 2.40 | 3.36 | 2.99 | 4.33 | 8.27 |

LEGEND: 172249-WXYZ

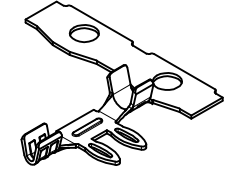
W = PLATING
(0 = REFLOWED MATTE TIN)

X = CRIMP SIZE
(1 = 14-16 AWG, (UL1007) INSUL / .062" PCB)
(2 = 18-20 AWG, (UL1007) INSUL / .062" PCB)

YZ = NOT USED
(00)



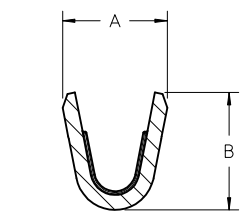
ISOMETRIC VIEW
SERIES 172249



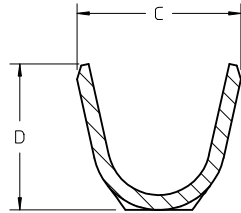
FOR 22-24 AND
26-28 AWG VERSIONS
SEE SERIES NO
172677

NOTES:

1. MATERIAL: BRASS
2. FINISH:
RMT = OVERALL REFLOWED MATTE TIN, 0.00152mm / .000060 inches MIN
OVER 0.00127 mm / .000050 inches MIN NICKEL, OVERALL
3. PRODUCT SPECIFICATION: PS-172249-001
4. PACKAGING INFORMATION: PK-172249-001
(24" CARDBOARD REEL)
5. MATES WITH: N/A (FOR SOLDERING TO PCB)
6. THIS PART CONFORMS TO CLASS B REQUIREMENTS OF COSMETIC SPEC PS-45499-002.
7. TERMINAL DESIGNED FOR THRU-HOLE SOLDERING, NOT FOR PRESS-FIT. INTERFERENCE FIT PROVIDES RETENTION OF TERMINAL TO BOARD DURING SOLDERING ONLY.
8. INSULATION DIAMETER RANGES AND MAX PCB THICKNESS SHOWN ARE GUIDELINES TO PRODUCE 0.50mm / (0.020 inches) OR MORE SOLDER-TAIL PROTRUSION.
9. CRIMPING PROCESS CAUSES TERMINAL GROWTH OF APPROXIMATELY 1.0mm / (0.04 inches).
10. INCLUDING TERMINAL GROWTH AND WIRE BRUSH LENGTH.



SECTION V-V
CONDUCTOR CRIMP

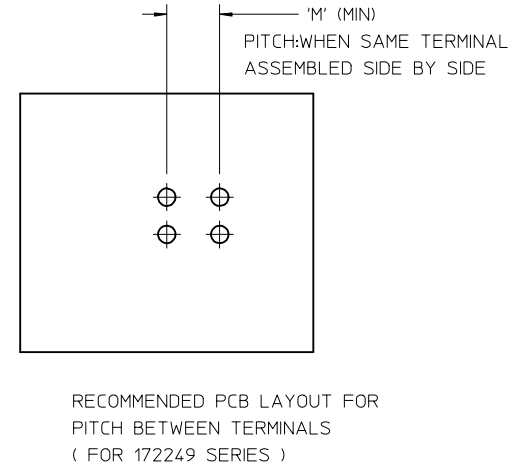
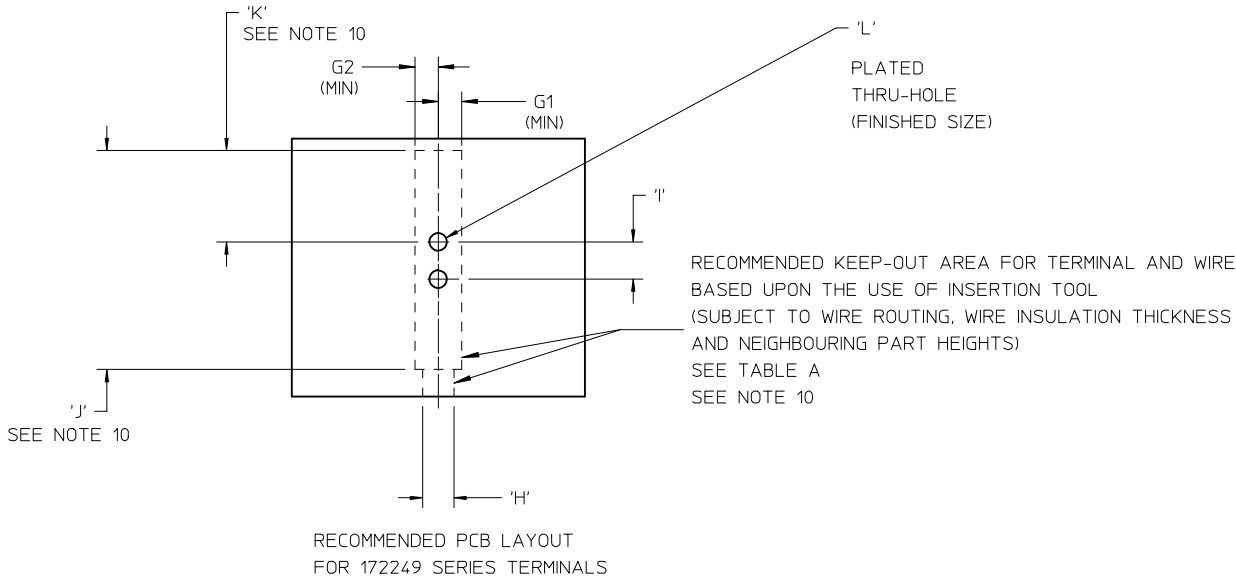


SECTION W-W
INSULATION CRIMP

| | | | | | | | | |
|--|---|-----------------|---------------------------------------|--|--------------------|---|-------------------------------|---------------------|
| KEEP OUT AREA DIMS CHANGED EC NO: UCP2015-0803 DRAWN:SS06 CHKD: APPR:RHODGE B | DESCRIPTION 2014/08/25 2014/09/12 | QUALITY SYMBOLS | GENERAL TOLERANCES (UNLESS SPECIFIED) | DIMENSION STYLE MM ONLY | SCALE 10:1 | DESIGN UNITS METRIC | THIRD ANGLE PROJECTION | |
| | | ▽=0 | 4 PLACES ± --- ± --- | DRAWN BY ISHWARG | DATE 2013/10/19 | TITLE 14-20 AWG SOLDER RIGHT TERMINAL | | |
| | | ▽=0 | 3 PLACES ± --- ± --- | CHECKED BY | DATE | | | |
| | | ▽=0 | 2 PLACES ± 0.25 ± --- | APPROVED BY RHODGE | DATE 2013/11/19 | MATERIAL NO. | DOCUMENT NO. SD-172249-001 | SHEET NO. 1 OF 2 |
| ANGULAR ± 1/2° DRAFT WHERE APPLICABLE MUST REMAIN WITHIN DIMENSIONS | | | SIZE B | THIS DRAWING CONTAINS INFORMATION THAT IS PROPRIETARY TO MOLEX INCORPORATED AND SHOULD NOT BE USED WITHOUT WRITTEN PERMISSION | | | | |

TABLE A

| MATERIAL NUMBER | KEEP OUT ZONE 1: WHEN THE NEIGHBOUR PARTS HEIGHT IS LESS THAN 4.0MM | | KEEP OUT ZONE 2: WHEN THE NEIGHBOUR PARTS HEIGHT IS MORE THAN 4.0 MM AND LESS THAN 30.0 MM | | | | | | | PITCH (WHEN SAME TERMINAL ASSEMBLED SIDE BY SIDE) |
|-----------------|--|------|---|------|------|------------|-------|------|-------------|---|
| | G1 | G2 | G1 | G2 | H | I ±0.08 | J | K | L ∅±0.05 | 'M' (MIN) |
| 172249-0100 | 2.50 | 5.40 | 4.75 | 7.90 | 4.29 | 2.10 | 10.00 | 4.75 | 1.10 | 6.00 |
| 172249-0200 | 2.50 | 5.25 | 4.75 | 7.85 | 3.60 | 2.10 | 10.00 | 4.75 | 1.10 | 5.40 |



| | | | | | | | | | | |
|---|---|-----------------|---------------------------------------|----------------------------|---|---|------------------------|------------------------|--|---------------------------|
| KEEP OUT AREA DIMS CHANGED EC NO: UCP2015-0803 DRAWN:SS06 CHKD: APPR:RHODGE | DESCRIPTION 2014/08/25 2014/09/12 | QUALITY SYMBOLS | GENERAL TOLERANCES (UNLESS SPECIFIED) | DIMENSION STYLE MM ONLY | | SCALE 2:1 | DESIGN UNITS METRIC | THIRD ANGLE PROJECTION | | |
| | | ▽=0 | 4 PLACES ± --- ± --- | DRAWN BY ISHWARG | DATE 2013/10/19 | TITLE 14-20 AWG SOLDER RIGHT TERMINAL | | | | |
| | | ▽=0 | 3 PLACES ± --- ± --- | CHECKED BY | DATE | | | | | |
| | | ▽=0 | 2 PLACES ± 0.25 ± --- | 1 PLACE ± 0.35 ± --- | 0 PLACE ± --- ± --- | APPROVED BY RHODGE | DATE 2013/11/19 | molex | | MATERIAL NO. SEE CHART |
| DRAFT WHERE APPLICABLE MUST REMAIN WITHIN DIMENSIONS | | | ANGULAR ±1/2° | | THIS DRAWING CONTAINS INFORMATION THAT IS PROPRIETARY TO MOLEX INCORPORATED AND SHOULD NOT BE USED WITHOUT WRITTEN PERMISSION | | | | | |