

Multi-Lamp Test Indicators enable groups of indicator lamps to be tested from a single pushbutton switch without interrupting normal operation.

## Tranilamp DTMU's

- **offer an economic solution**

Use of a simple diode blocking technique makes this multi-test indicator particularly suitable for dc

- **increase flexibility**

Can use with Tranilamp's extensive range of:  
 Filament Lamps  
 LED cluster lamps  
 Panel housings and lenses  
 Pushbutton switches

## Standard Specification

### Type

DTMU - Standard Multi-Test Low Voltage Indicator Lamp Body.

### Input Voltages

6, 12, 24, 28, 50 or 60 V DC supplies.

AC voltages may be used but with reduced lamp brightness.

### Test Mode Current Ratings

As Operating Mode i.e. Lamp rating.

### Surrounding Air Temperature

Maximum 50 deg C when operating

### Lamps

Only supplied as Options. For LED's only DC applicable.

### Lamp Caps

E10 Miniature Edison Screw - MES

### Mounting

Mount to panel using JY or H Series housings and lenses (see Data Sheet 200). DTMU's screw onto housings.

### Terminations

M3.5 cable clamps with fixed terminal covers to IP20

### Construction

ABS/Polycarbonate grey, flame retardent to UL94Vo non-drip.

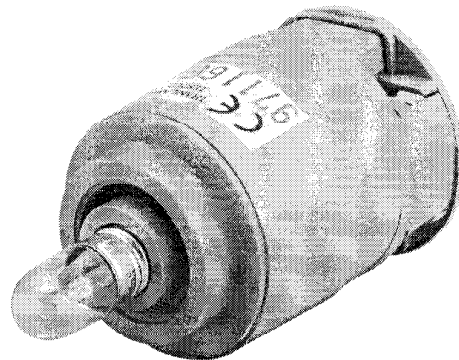
### Tests

DTMU's conform to BS EN 60947-5-1.

All units are CE labelled in accordance with the L.V. Directive.

### Weight (Body Only)

29 g



DTMU Indicator Body and Lamp  
(Lens/Housings/Lamps are Optional)

## Optional Extras

### Lamps

Filament Lamps up to 60 V

LED4 - 4 x LED cluster lamp in Amber, Green, Red or Blue.

**Must use DC up to 24 V**

LED7 - 7 x LED cluster lamp in Amber, Green or Red. **Must**

**use DC up to 24 V**

See Data Sheet 201 for a full list of lamps available.

### Lamp Caps

BA9s Miniature Bayonet Cap - MBC

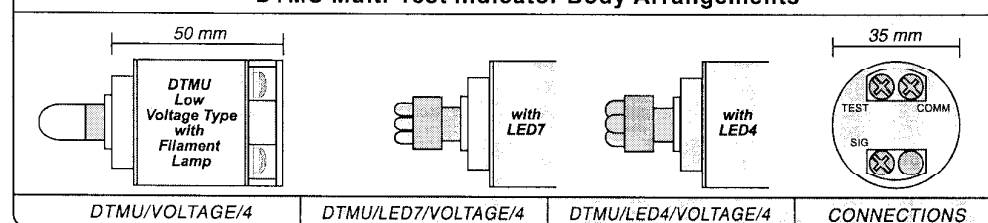
### Terminal Protection

Turret or Funnel Shrouds are available to protect terminals to IP65 (see Data Sheet 214).

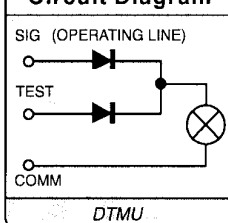
Additional seals may be necessary for housings and lenses (see Data Sheet 200).

**To find the correct Product Code for ordering, please turn to the reverse side.**

## DTMU Multi-Test Indicator Body Arrangements



## Circuit Diagram



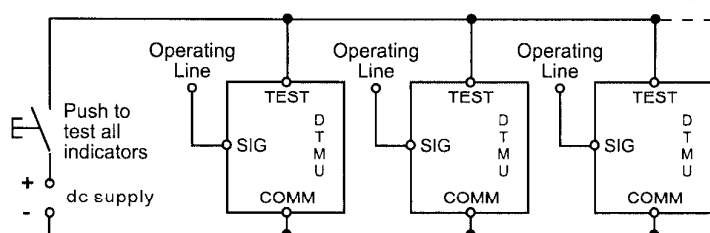
## DTMU Multi-Test Circuit Connection

DTMU's incorporate blocking diodes to enable a group of units to be tested from one Test Pushbutton without interrupting normal operation.

The Control Circuit will usually be DC, but AC can be used with filament lamps only.

Please advise us if battery backup services are fitted to the supply.

LED cluster lamps can **only** be used with DC supplies.



**DTMU**

# Multi-Lamp Test Indicator Lamps

**Product Data Sheet 204/2 Issue 1**

## How to derive the correct Product Code

Lens Housing (see Product Data Sheet 200)	/	Indicator Body Lamp Product Code					/	Lens Colour (if applicable)
		Body Type	Lamp Type	Input Volts	Cap Type	4		

<b>BODY</b>	Standard Low Voltage Multi-Test Indicator Lamp Body	DTMU
-------------	---	------

<b>Lamps are supplied for this product only as an optional extra.</b> If required Lamp Voltage is specified as Input Voltage.		
<b>LAMP</b>	Filament Lamp Voltage options: 6, 12, 24, 28, 50, 60 V	BLANK
	LED 7 Cluster 4.5 or 24 V DC [RED, AMBER, GREEN only]	RED LED7R
		AMBER LED7A
		GREEN LED7G
	LED4 Cluster 4.5 or 24 V DC for RED, AMBER, GREEN. (BLUE available at 24 V DC only.)	RED LED4R
		AMBER LED4A
		GREEN LED4G
		BLUE LED4B

<b>INPUT VOLTAGES</b> (Identical to Lamp Voltage)	No Lamp fitted		BLANK
	Filament Lamp suitable Voltages (DC Supply preferred. If AC Supply used lamp operates at reduced brightness)	6 V	6
		12 V	12
		24 V	24
		28 V	28
		50 V	50
		60 V	60
	LED7 or LED4 Clusters DC only supplied	4.5 V DC	4.5
		24 V DC	24

<b>LAMP CAPS</b>	Standard Mini-Screw - MES (with lamp fitted)	BLANK
	Standard Mini-Screw - MES (no lamp fitted)	MES
	Optional Mini-Bayonet - MBC	MBC

<b>TERMINATIONS</b>	Standard 3.5mm captive cable clamp with cover. (No Alternatives)	4
---------------------	--	---

<b>OTHER OPTIONS</b>	IP65 Protection - Funnel or Turret Shrouds protect Body Terminals	Specify after Code (see Data Sheet 214)
----------------------	---	---

**Example 1**  
Product Code: -DTMU/LED7A/24/MBC/4

is a Standard DTMU Multi-Test Indicator Lamp body, amber LED 7 lamp cluster with MBC cap and standard screw terminals.  
Input: 24VDC.

**Example 2**  
Product Code: -FHA/DTMU/MES/4 Red

is a Standard DTMU Multi-Test Indicator lamp with no lamp supplied, but fitted with MES lamp holder and standard screw terminals mounted on an FH housing with a red FA lens. Input: Unspecified.

For a full list and description of lamps available see Product Data Sheet 201

Tranilamp manufacture an extensive range of Panel Products including:  
a Multi-Test Transformer Indicator Lamp to operate on AC.  
Ask for Product Data Sheet 203