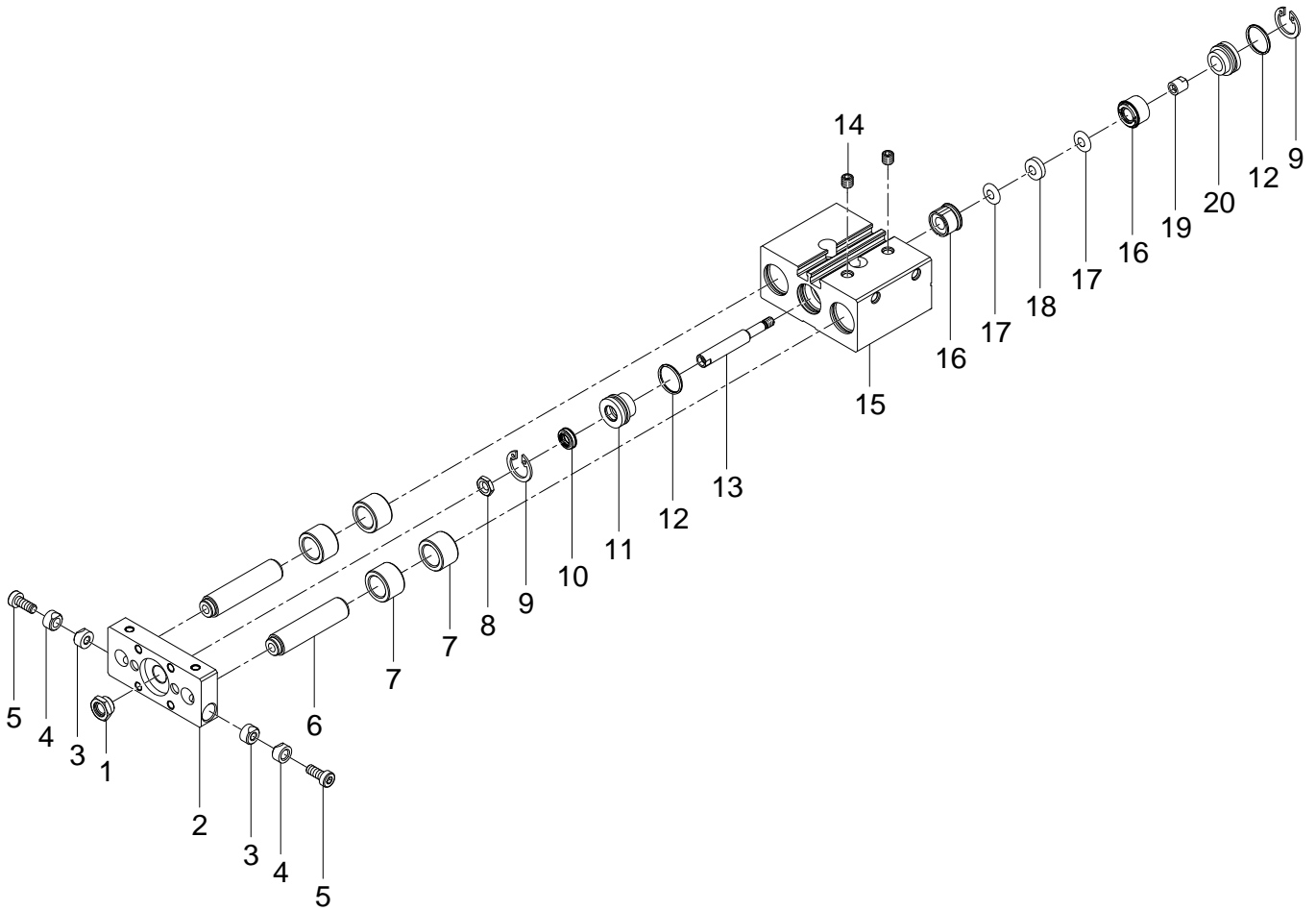


170840 DFM-20-20-P-A-GF Guided drive - Series till 04-2015



170840 DFM-20-20-P-A-GF Guided drive - Series till 04-2015

Pos.	Part no.	Type	Note	Qty.	Unit
A	383664	DFM- 20-PA Set of wearing parts	Spare parts: 10, 12, 16 ▶ Replacing the wearing parts	1	PC
1	377739	M10X1.25 Collar nut	Use locking compound 8181256 CYBERBOND TM44 Tightening torque 28.3 Nm / 20.9 lbf ft	1	PC
2	671944	DFM-20-P-A End plate		1	PC
3	368080	M 5 Clamping piece		2	PC
4	368079	M 5 Clamping piece		2	PC
5	368051	DIN 6912-M5X14-8.8 Socket head screw	Use locking compound 8181256 CYBERBOND TM44 Tightening torque 6 Nm / 4.4 lbf ft	2	PC
6	368052	DFM- 20- 20P-A-GF Guide rod		2	PC
7		DFM-20 Plain bearing	Not available	2	PC
8	387995	M10X1,25-1.0715 Hex nut	Tightening torque 28.3 Nm / 20.9 lbf ft	1	PC
9	387622	DIN 472-21X1 Retaining ring		2	PC
10		WIFC1-10X14X3,7-TPE-U Wiper seal	Not available separately, see position A Lubricate with 684474 LUB-KC1 during assembly	1	PC
11	713421	DFM - 20-P-A Bearing cap		1	PC
12		B-18X1,5-N-NBR70 O-ring ISO3601	Not available separately, see position A Lubricate with 684474 LUB-KC1 during assembly	2	PC
13	368068	KS D03 10 S0032.5 Piston rod		1	PC
14	369947	M5X5 Plug screw module		2	PC
15		DFM- 20- 20P-A Housing	Not available Lubricate with 684474 LUB-KC1 during assembly	1	PC
16		PEFC1-20-TPE-U Piston seal	Not available separately, see position A Lubricate with 684474 LUB-KC1 during assembly	2	PC
17	338264	6X18X0,5-1.0350 Disc		2	PC
18	338252	18X6X2,5 Ring magnet		1	PC
19	338234	ADVU- 20/25 -PA Collar nut	Use locking compound 8181256 CYBERBOND TM44 Tightening torque 2.7 Nm / 2.0 lbf ft	1	PC
20		DFM - 20-P-A End cap	Not available	1	PC