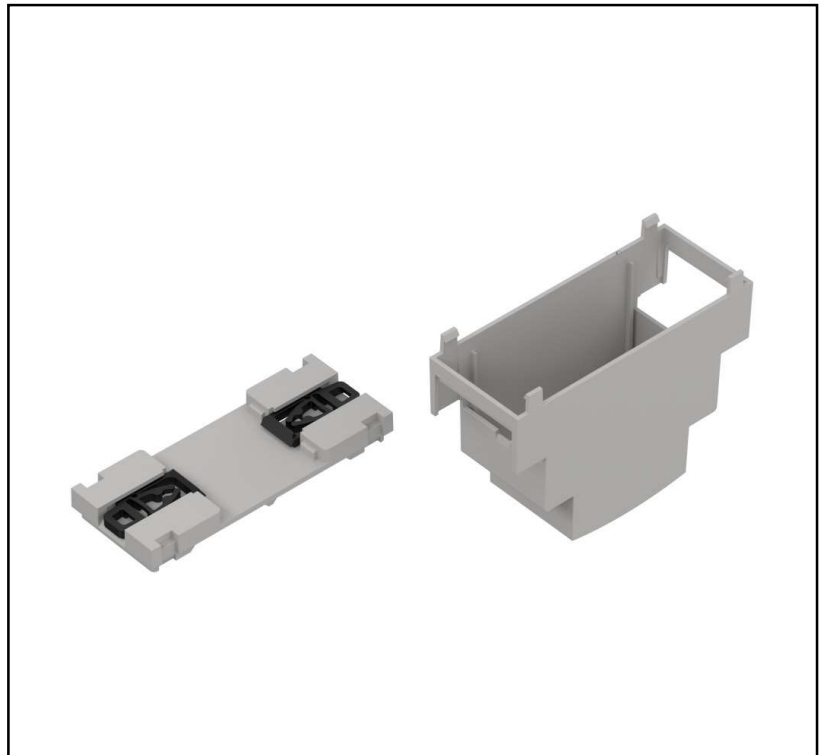


Features

- Made of ABS V0
- Available in light grey color
- Supplied with two latches
- Different slot masks and filters
- Assembled without screws

RS PRO DIN Rail Enclosures

RS Stock No.: (0336864)



RS PRO is the own brand of RS. The RS PRO Seal of Approval is your assurance of professional quality, a guarantee that every part is rigorously tested, inspected, and audited against demanding standards. Making RS PRO the Smart Choice for our customers.

Product Description

Made of self-extinguishing ABS V0, customizable two module DIN enclosure. It can be modified by different slot masks and filters, ribs inside give a flexible solution for PCB installation. Mounted to TS35 rail by three latches thanks to this solution there are no technological holes between the PCB plate and the rail. The casing is assembled without screw.

General Specifications

Body Material	ABS V0
Colour	Light grey
RAL Code	RAL 7035
Accessories	Mounting latch 2 pcs
Mounting	DIN Rail TS35
Optional accessories	Slot mask - full ZD2TCJ ABS V0: 2 pcs Slot mask - full ZD2TCJ PC/ABS V0: 2 pcs Slot mask for sockets ZD2TCSJ ABS V0: 2 pcs Slot mask for sockets ZD2TCSJ PC/ABS V0: 2 pcs Slot mask - universal ZD2TCUJ ABS V0 2 pcs Slot mask - universal ZD2TCUJ PC/ABS V0 2 pcs Filter 0336877 (Red): 1.0 pcs Filter 0336874 (Transparent): 1.0 pcs Filter 0336870 (Lightgrey): 1.0 pcs Filter KP 0336871 (Lightgrey): 1.0 pcs

Mechanical Specifications

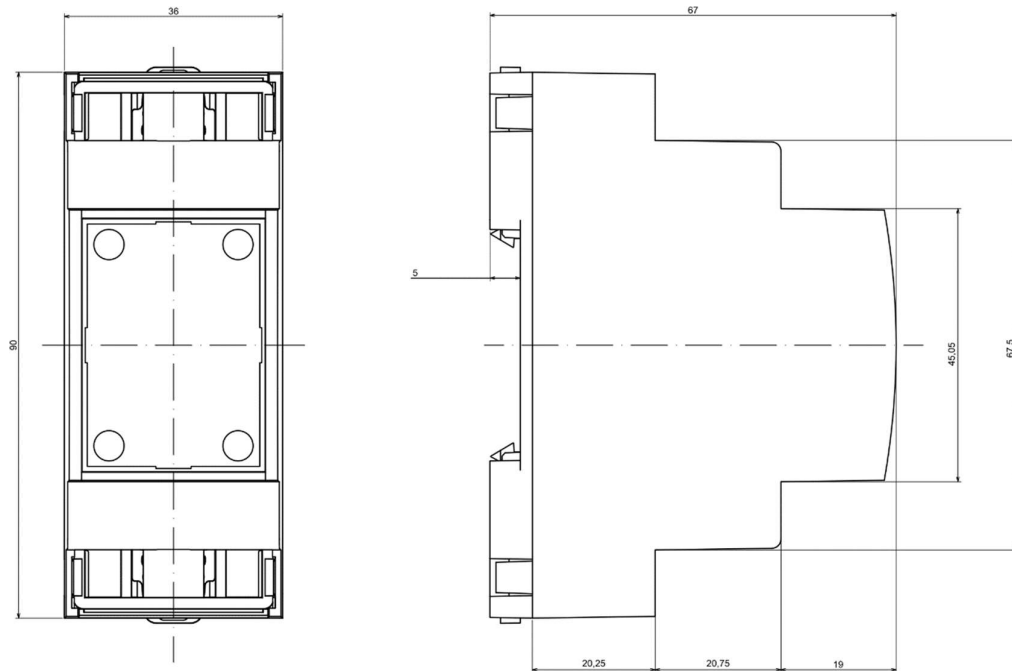
External Height	67mm
External Length	90mm
External Width	36mm

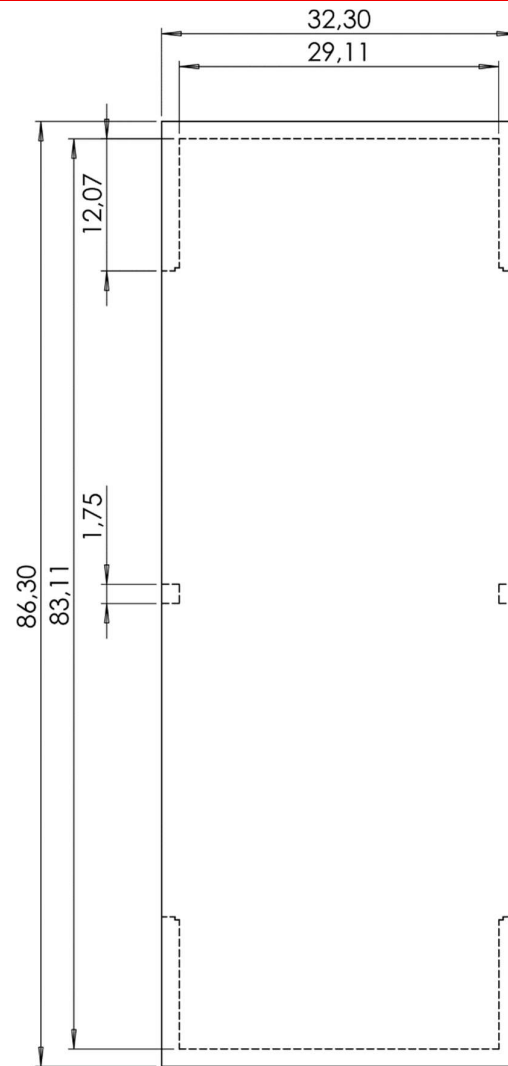
Approvals

Declarations	REACH
Standard Met	RoHS Compliant

Similar Products

Stock No.	Brand	Product Name	Body Material	Colour	Shielded
194-7579	RS PRO	DIN Enclosure	ABS	Grey	No
186-2293	RS PRO	DIN Enclosure	ABS	Grey	No





Dashed line shows outline of the mounting elements under PCB board
All dimensions are given within +/-0,25mm tolerance