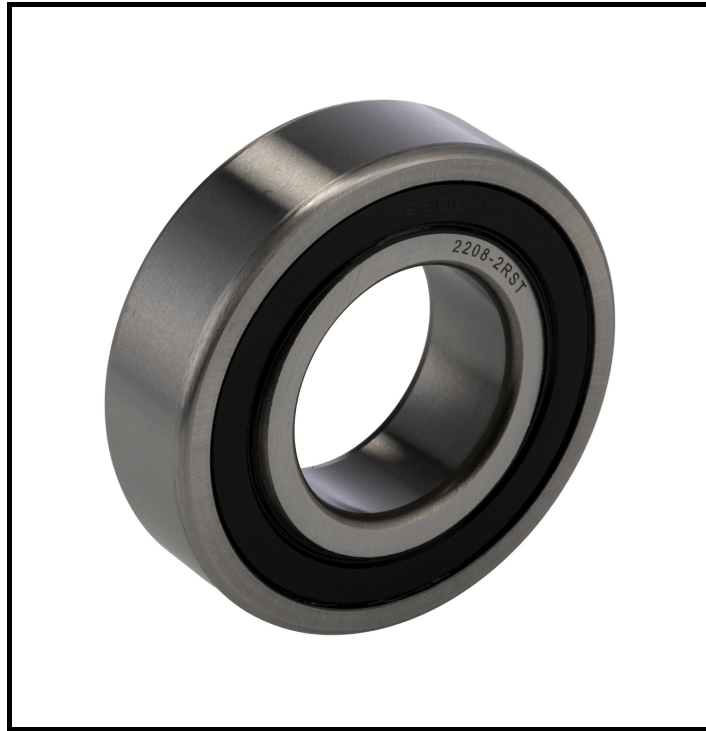


FEATURES

- **Self-Aligning Design:** Compensates for misalignment, reducing stress and wear on the bearing.
- **Sealed End Type:** Protects against contamination, ensuring longevity and consistent performance.
- **Polymer Cage Material:** Offers reduced friction and noise, enhancing operational efficiency.
- **Dynamic Load Rating of 19.9 kN:** Supports high loads, making it suitable for demanding applications.
- **Limiting Speed of 6300 rpm:** Allows for high-speed operations without compromising stability.

RS PRO Self-Aligning Ball Bearing, 40 mm Inside Diameter

RS Stock No: 291-665



RS Professionally Approved Products bring to you professional quality parts across all product categories. Our product range has been tested by engineers and provides a comparable quality to the leading brands without paying a premium price

Product Description

This RS PRO self-aligning ball bearing is designed for applications requiring high precision and reliability. With a 40 mm inside diameter, it is ideal for use in environments where misalignment might occur, providing smooth operation and extended service life.

General Specifications

Ball Material	Steel
Bearing Type	Self-Aligning
Bore Type	Parallel
Cage Material	Polymer
Dynamic Load Rating	19.9 kN
End Type	Sealed
Internal Clearance	CN
Limiting Speed	6300 rpm
Number of Rows	2
Product Type	Ball Bearing
Race Material	Steel
Race Type	Plain
Race Width	23 mm
Static Load Rating	6.95 kN

Mechanical Specifications

Inside Diameter	40 mm
Outside Diameter	80 mm

Approvals

Standards/Approvals	ANSI-ESD S20.20:2021
---------------------	----------------------

