

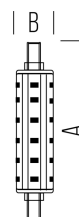
## LINEAR LEDs R7S

SLD9511X2

10,7 W - 1521lm - 3000K



15.000h



DIMENSIONS	A	B	C
1	118	22	

GENERAL INFORMATIONS	
Code	SLD9511X2
Ean	8031453025489
Family	LINEAR LEDs R7S
Product line	R7s
Technology	LED
Operating temperature (° C)	-20 - +40
Years warranty	2
LIGHTING DATA	
CCT (K)	3000
Luminous lux (lm)	1521
Beam (°)	130
Luminous Efficiency (lm/W)	142
Color rendering (CRI)	>80

TECHNICAL FEATURES	
Base	R7s
Power (W)	10,7
Equivalence (W)	-
Supply voltage (V) / Max (V)	220 / 240
Power frequency (Hz)	50/60
Current consumption (mA)	88
Dimmer compatibility	NO
On/off cycles	40000
Nominal life (h)	15000
PACKAGING	
Packaging	BOX
Pack	10 / 50
Gross weight (Kg)	3.5
Net weight (Kg)	0.036