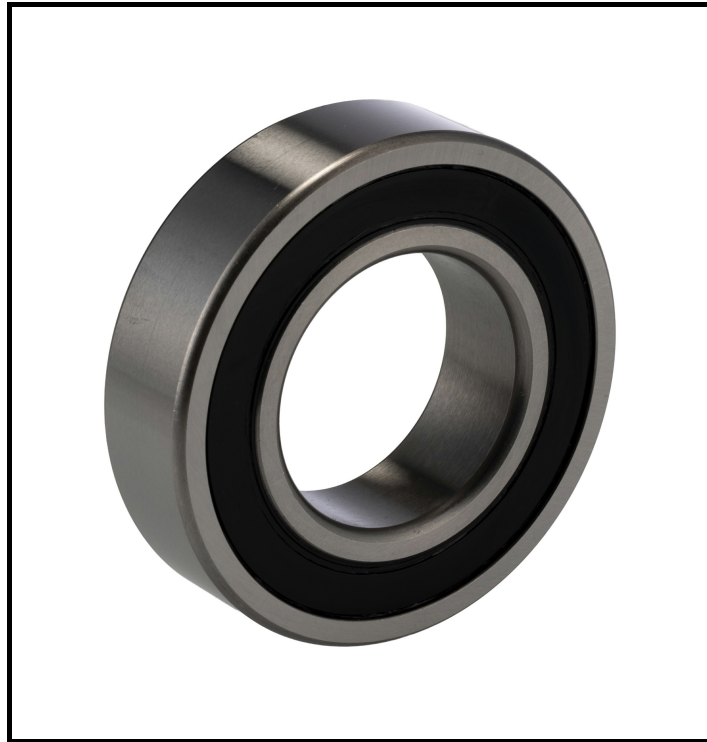


FEATURES

- **Self-Aligning Design:** Compensates for misalignment, reducing stress on components
- **Steel Ball Material:** Provides strength and durability for long-lasting performance
- **Polymer Cage Material:** Offers reduced friction and noise during operation
- **Sealed End Type:** Protects against dust and moisture, extending bearing life
- **Dynamic Load Rating of 22.9 kN:** Supports high load applications effectively
- **Limiting Speed of 5600 rpm:** Suitable for high-speed operations
- **CN Internal Clearance:** Ensures optimal performance under varying conditions

RS PRO Self-Aligning Ball Bearing, 45mm Parallel Bore

RS Stock No: 291-667



RS Professionally Approved Products bring to you professional quality parts across all product categories. Our product range has been tested by engineers and provides a comparable quality to the leading brands without paying a premium price

Product Description

This RS PRO self-aligning ball bearing is designed for applications requiring high precision and reliability. With a 45mm parallel bore, it is ideal for accommodating misalignment and reducing friction in rotating machinery. The sealed end type ensures protection against contaminants, enhancing durability and performance.

General Specifications

Ball Material	Steel
Bearing Type	Self-Aligning
Bore Type	Parallel
Cage Material	Polymer
Dynamic Load Rating	22.9 kN
End Type	Sealed
Internal Clearance	CN
Limiting Speed	5600 rpm
Number of Rows	2
Product Type	Ball Bearing
Race Material	Steel
Race Type	Plain
Race Width	23 mm
Static Load Rating	7.8 kN

Mechanical Specifications

Inside Diameter	45 mm
Outside Diameter	85 mm

Approvals

Standards/Approvals	ANSI-ESD S20.20:2021
---------------------	----------------------

