

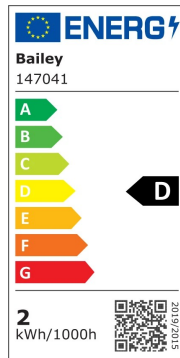
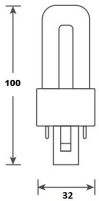


**LED PL Glass TC-S G23 2P 2W (5W) 280lm 840 EM+AC**

Article number: 147041

BAI LED PL Glass G23 2-pins TC-S 2W (5W) 4000K Frosted 280lm 230V-240V 270° 32x100mm Temp. -20°C +40°C LED-lamp Alt PLS Dulux S

The LED PL Glass G23 (2-pin) TC-S lamps are replacements for the often used compact fluorescent lamps without integrated ballast. PL stands for Public as these lamps are mainly used in public spaces, corridors, offices and as orientation lighting. This PL LED series has the same shape and size as its fluorescent predecessors. In addition, just like their predecessor, they are made of glass, which ensures the same uniform light image. They are therefore a 1-on-1 sustainable replacements. Installation: Disconnecting magnetic ballast is optional, not necessary. Not suitable for series connection and for electronic ballast. Always read the manual carefully before installation. Ambient temperature range: -20°C to +40°C.



**General ETIM properties**

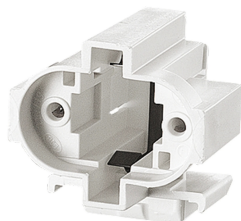
ETIM group	Lamps
ETIM class	LED-lamp/Multi-LED
Name	LED PL Glass TC-S G23 2P 2W (5W) 280lm 840 EM+AC
Brand	Bailey
Productseries	LED PL Glass
Producttype	G23 2P EM+AC

## ETIM specifications

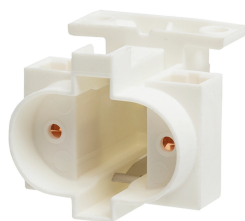
Socket	G23
Luminous flux [lm]	280 - 280
Nominal voltage [V]	220 - 240
Lamp power [W]	2 - 2
Colour temperature [K]	4000 - 4000
Diameter [mm]	32
Length [mm]	100
Dimmable	No
Lamp shape	Tube, single-ended
Beam angle [°]	270 - 270
Colour	White
Type of glass/cover	Opal
Lamp designation	Other
Colour rendering index CRI	80-89
Voltage type	AC
Filament lamp	No
Rated luminous flux according to IEC 62612 [lm]	280
Power factor	0.5
Lamp efficacy [lm/W]	140
Nominal current [mA]	18 - 18
Colour of light according to EN 12464-1	Neutral white 3300-5300 K
Housing colour	White
Average nominal lifetime [h]	30000
Degree of protection (IP)	IP20
Colour consistency (McAdam ellipse)	SDCM5
Min. number of switching cycles	15000
Weighted energy consumption in 1000 hours [kWh]	2
Remote operation possible	No
With movement sensor	No
With remote control	No
Photobiological safety according to EN 62471	RG0
Compatible with Apple HomeKit	No
Compatible with Google Assistant	No
Compatible with Amazon Alexa	No
IFTTT support available	No
Suitable for electronic ballast	No
Suitable for magnetic ballast	Yes
Dimming phase cut-off (trailing edge)	No
Dimming phase cut-on (leading edge)	No
Dimming Touch and Dim	No
Dimming Zigbee	No

Dimming Bluetooth	No
Dimming Wi-Fi	No
Energy efficiency class according to EU regulation 2019/2015	D
With twilight switch	No
Material of light bulb	Glass

### Complementary articles



140236  
BJB 26.719.4354.50 G23  
Lampholder Snap in



146581  
VS 101306 G23 Lampholder  
Base fixing holes M4