


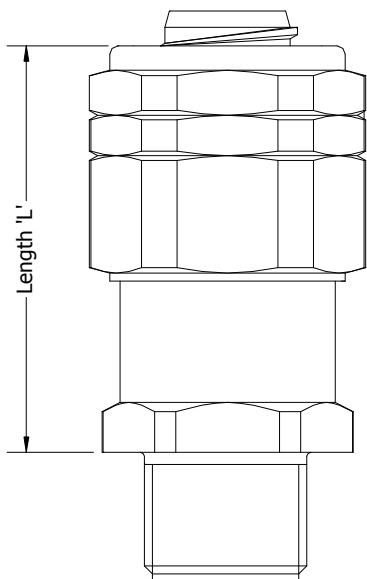




G1 Gland Flameproof System

- Description**
- Group 1 Flameproof Barrier Gland For use with Liquid Tight Flexible Conduits IP66, -60°C to +130°C Exd I&IIC Exe I&II Extb IIIC
- Intended Use**
- Group I and II Exde I Mb
Zones 1, 2, 21 & 22 Exde IIC Gb
Class I Div II ABCD Extb IIIC Db
Class II Div I EFG
- Material**
- Manufactured in Brass, Nickel Plated Brass and Stainless Steel 316
HA* - Brass HA*M – Nickel Plated Brass HA*S – Stainless Steel
- Compatible Conduits**
- EXLB, EXLT, EXLH, EXLLH, EXLBTT, EXLHC
EXSB, EXST, EXSH, EXSLLH, EXSBTT, EXSLHC
- Approvals**
- ATEX directive 94/9/EC (ATEX 95) to standards IEC60079-0:2007 Ed 5, IEC60079-1:2007 Ed 6, IEC60079-7:2007 Ed 4, IEC60079-31:2008 Ed 1 EN60079-0:2009 EN60079-1:2007 EN60079-7:2007 EN60079-31:2008
- Certifications**
-  ATEX SIRA09ATEX1231X  IECEX IECEX SIRA09.0103X  CSA 2310045



Size Ref (Conduit Size)	Part No.	Gland Body		Gland Nut		Metric/ NPT	Max Dia. Over Cores	Max Dia. Over Single Core	Max No. Of Cores	Overall Length
		A/F	A/C	A/F	A/C					
16 – 3/8"	HAM*0304G1	28.6	31.0	32.0	34.0	M20	10.5	10.0	9	50.0
	HAA*0304G1					1/2"				
20 – 1/2"	HAM*0404G1	28.6	31.0	32.0	34.0	M20	13.0	13.0	15	50.0
	HAA*0404G1					1/2"				
25 – 3/4"	HAM*0505G1	34.0	37.0	34.0	37.0	M25	17.9	17.9	28	50.0
	HAA*0505G1			34.9 SS		3/4"				
32 – 1"	HAM*0606G1	42.0	45.0	42.0	45.0	M32	24.0	20.0	50	50.0
	HAA*0606G1			42.5 SS		1"				
40 – 1 1/4"	HAM*0707G1	50.0	54.0	52.0	57.0	M40	32.0	32.0	75	57.0
	HAA*0707G1					1 1/4"				
50 – 1 1/2"	HAM*0808G1	60.0	64.0	60.0	64.0	M50	35.0	35.0	80	58.0
	HAA*0808G1					1 1/2"				
63 – 2"	HAM*0909G1	70.0	76.0	70.0	76.0	M63	45.0	45.0	100	70.0
	HAA*0909G1			69.8 SS		2"				

NON METALLIC (SILICON) PARTS HAVE PASSED THE REQUIREMENTS OF IEC/EN60079-0 FOR AGE TESTING AND ARE THIRD PARTY APPROVED.

Gland comes complete with two part epoxy putty, gloves and fitting instructions.
Putty can be obtained separately if required in 50g and 75g sizes. Part codes EXEP/50 & EXEP/75