

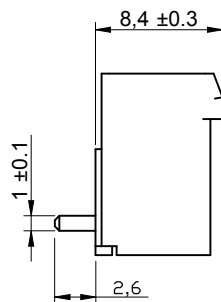
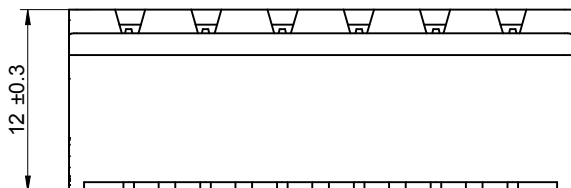
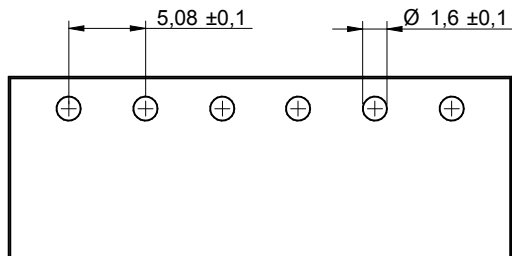
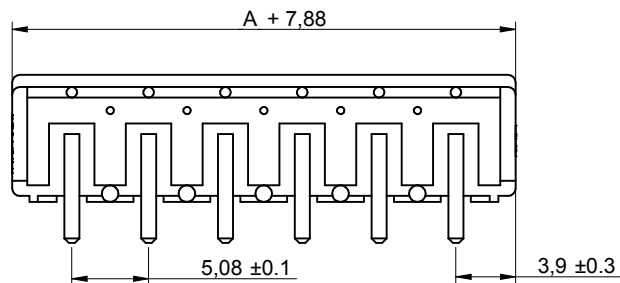
1

2

3

4

5



Poles	A
2	5.08
3	10.16
4	15.24
5	20.32
6	25.40
7	30.48
8	35.56
9	40.64
10	45.72
11	50.80
12	55.88

### CHARACTERISTICS

#### MATERIAL

Insulator material : LCP  
 Flammability rating : UL94-V0  
 Colour : Black  
 Contact pin : Brass (CuZn)  
 Surface of solder tail plating : Tin Plated

#### ENVIRONMENTAL

Operating temperature : -40°C up to 105°C  
 Compliance : Lead free and RoHS

#### SOLDERING

Solder temperature : Reflow process as per JEDEC J-020D-STD

#### ELECTRICAL

Current rating : 10A  
 Working voltage : 300 Vac  
 Dielectric withstanding voltage : 4 kVac/min  
 Contact resistance : 20 mΩ max

#### STANDARD

RoHS Certified : E315414 / Model number 7015

#### MECHANICAL

Pitch : 5.08mm

#### PACKAGING

Tape & Reel

RoHS Compliant

G				PROJECTION: 	GENERAL TOLERANCE .X = +/- 0.2 .XX = +/- 0.15		DESCRIPTION: SERIE 7015B - 5.08MM CLOSED HORIZONTAL PCB HEADER - THR TYPE	SIZE <b>A4</b>
F								
E								
D								
C	22-MAR-12	PIN	GG	APPROVAL: RJ	UNIT: MM	WERI PART NO: 691 701 540 0xx B		
B	19-DEC-11	6917015400xx	QL		SCALE: 2/1			
A	14-SEP-11	PDF	QL		SHEET: 1/2			
REV	DATE	FILE	BY		DRAW: QUENTIN			

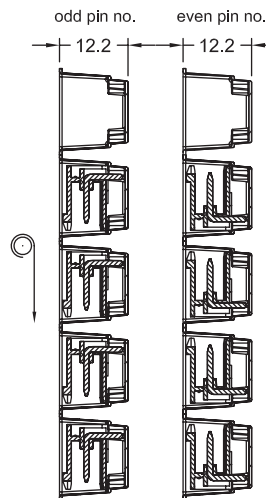
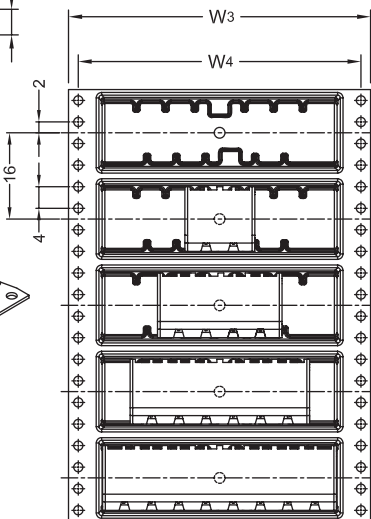
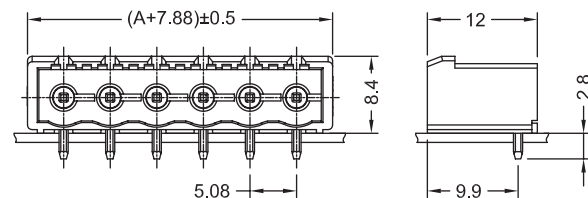
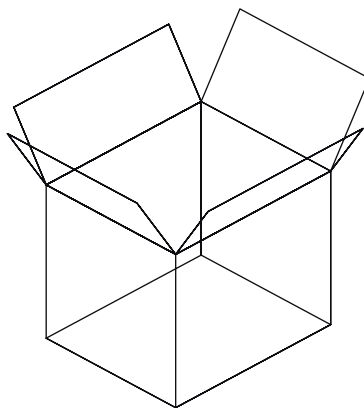
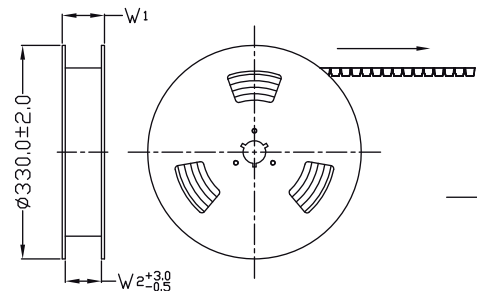
1

2

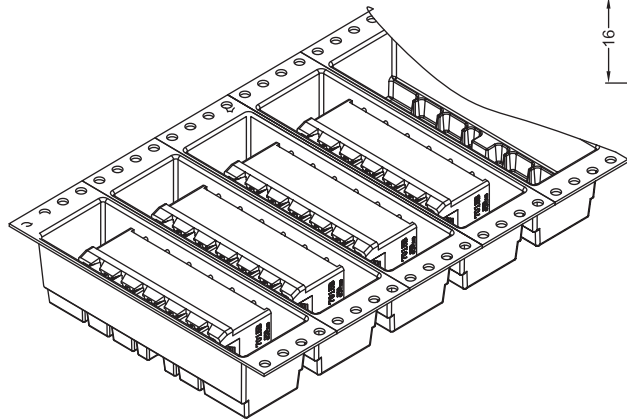
3

4

5

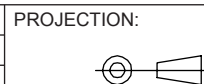


1. 10 sprocket hole pitch cumulative tolerance  $\pm 0.20$
2. Carrier camber is within 1 mm in 250 mm.
3. Material : Black Conductive Polystyrene Alloy.  
Transparent anti-static PET
4. All dimensions meet EIA-481-C requirements.
5. Thickness :  $0.50 \pm 0.05$  mm.
6. Component load per 13" reel : 250 pcs.



Poles	A	Dimension				Packing (Reel/coton)	Carton dimensions (cm)	Quantity / Carton
		W1(mm)	W2(mm)	W3(mm)	W4(mm)			
2	5.08	36.4	32	32	28.4	10	33.5 x 33.5 x 40	2500
3	10.16	36.4	32	32	28.4	10	33.5 x 33.5 x 40	2500
4	15.24	60.4	56	56	52.4	6	33.5 x 33.5 x 40	1500
5	20.32	60.4	56	56	52.4	6	33.5 x 33.5 x 40	1500
6	25.40	60.4	56	56	52.4	6	33.5 x 33.5 x 40	1500
7	30.48	60.4	56	56	52.4	6	33.5 x 33.5 x 40	1500
8	35.56	60.4	56	56	52.4	6	33.5 x 33.5 x 40	1500
9	40.64	92.4	88	88	84.4	4	33.5 x 33.5 x 40	1000
10	45.72	92.4	88	88	84.4	4	33.5 x 33.5 x 40	1000
11	50.80	92.4	88	88	84.4	4	33.5 x 33.5 x 40	1000
12	55.88	92.4	88	88	84.4	4	33.5 x 33.5 x 40	1000

RoHS Compliant			
G			
F			
E			
D			
C			
B			
A			
REV	DATE	FILE	BY



GENERAL TOLERANCE  
 .X =  $\pm 0.2$   
 .XX =  $\pm 0.15$



APPROVAL: RJ

UNIT: MM  
 SCALE:  
 SHEET: 2/2  
 DRAW: QUENTIN

DESCRIPTION: SERIE 7015B - 5.08MM CLOSED HORIZONTAL PCB HEADER - THR TYPE

WERI PART NO: 691 701 540 0xx B

SIZE  
**A4**