

- 1
- 2
- 3
- 4
- 5
- 6
- 7
- 8
- 9
- 10
- 11
- 12
- 13
- 14
- 15
- 16
- 17
- 18

MATERIAL

AlSI 304 stainless steel.

ROTATING PIN

AlSI 304 stainless steel.

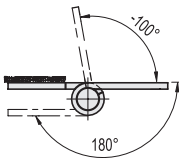
STANDARD EXECUTIONS

Pass-through holes for countersunk head screws.

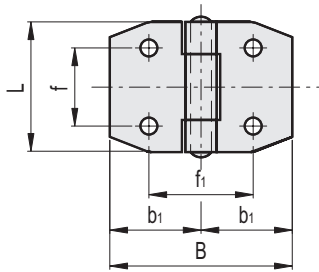
- **CMM-TR-SST-A**: hinge body on the jamb side identical to the hinge body on the door side, chamfered edges.
- **CMM-TR-SST-B**: hinge body frame side different to the hinge body door side.
- **CMM-TR-SST-C**: hinge body on the jamb side identical to the hinge body on the door side, radiused edges.

ROTATION ANGLE (APPROXIMATE VALUE)

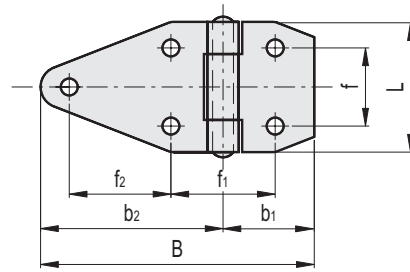
Max 280° (-100° and +180° being 0° the condition where the two interconnected surfaces are on the same plane).



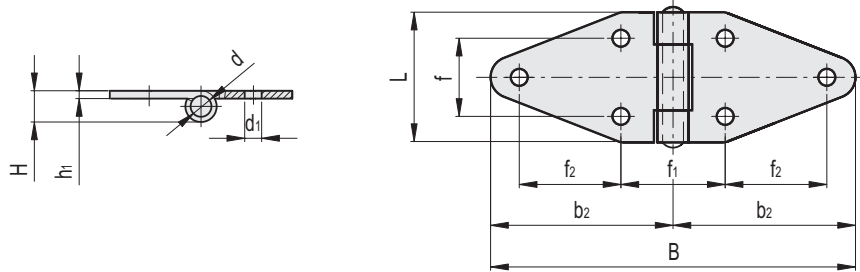
CMM-TR-SST-A



CMM-TR-SST-B



CMM-TR-SST-C



CMM-TR-SST-A



Code	Description	L	B	f	f1	H	h1	b1	d	d1	⚖️
428681	CMM-TR-SST-A-50	50	70	30	42	12	3	35	6	6.5	109

CMM-TR-SST-B



Code	Description	L	B	f	f1	f2	H	h1	b1	b2	d	d1	⚖️
428684	CMM-TR-SST-B-50	50	105	30	42	39	12	3	35	70	6	6.5	130

CMM-TR-SST-C



Code	Description	L	B	f	f1	f2	H	h1	b2	d	d1	⚖️
428687	CMM-TR-SST-C-50	50	140	30	42	39	12	3	70	6	6.5	149

Hinges and accessories