

Product Information



3370PVJ100P62

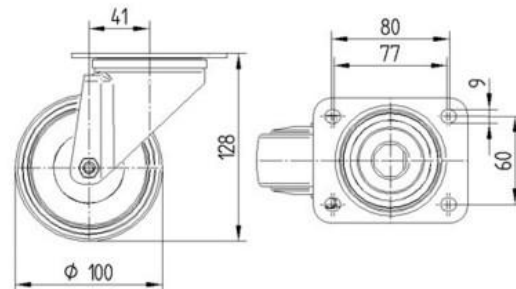
EAN 4031582377729

Swivel castor, housing made of pressed steel, bright zinc plated, blue passivated, double ball bearing swivel head, wheel axle with nut, dustguard, plate fitting.

Wheel centre made of Polypropylene, Tread: solid rubber, black, roller bearing, with threadguards.

Technical Data

Wheel diameter	100 mm
Width of Tread	35 mm
Size of Plate	105 x 85 mm
Plate hole centres	80/77 x 60 mm
Plate hole	9 mm
Offset	41 mm
Swivel Radius	91mm
Swivel Interference	182 mm
Overall height	128 mm
Temperature	- 20 / + 60 °C
Standard	EN 12532
Weight	0.9 kg
Swivel Radius	91 mm
Hardness of tread	A 85 Shore
Load capacity	75 kg
Load capacity (static)	150 kg



Roll performance	+	+	+	+	+
Movement noise	+	+	+	+	+
Attrition	+	+	+	+	+
Corrosion resistance	+	+	+	+	+