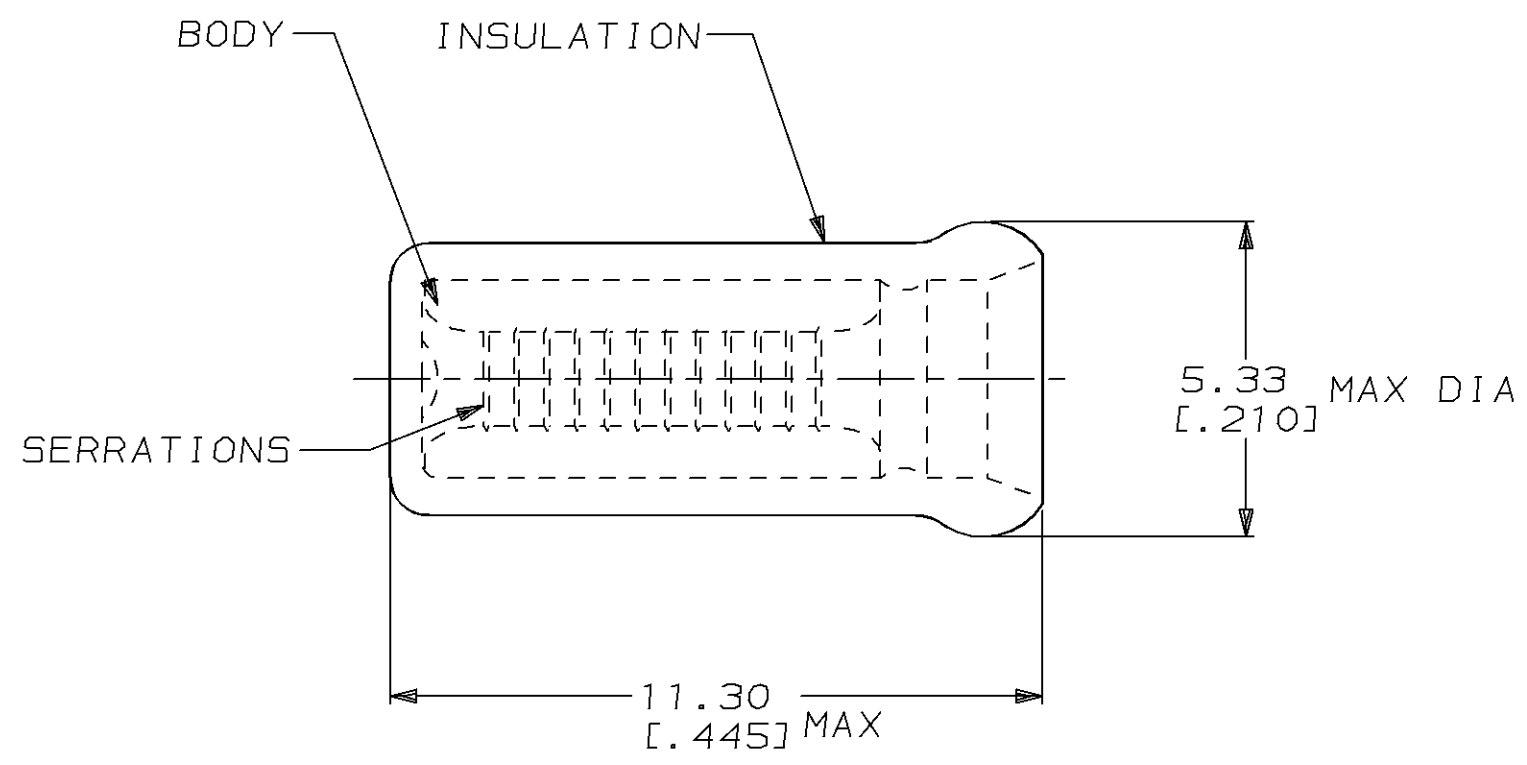


THIS DRAWING IS UNPUBLISHED. RELEASED FOR PUBLICATION ,19 .
 © COPYRIGHT 19 BY AMP INCORPORATED. ALL RIGHTS RESERVED.

| LOC | DIST | REVISIONS | | | | | |
|-----|------|-----------|-----|--------------------|---------|-----|------|
| | | P | LTR | DESCRIPTION | DATE | DWN | APVD |
| G | 14 | | F | REV / 0720-0906-96 | 21MAR96 | LO | ME |

1. USE FOR STRIPPED (SINGLE) WIRE END ONLY
2. WIRE INSUL DIA, 3.15 [.124] MAX



| MILITARY P/N & CLASS | QTY | PACKAGE TYPE | PART NO |
|-----------------------|------|------------------|------------|
| - | 100 | LOOSE PIECE, BOX | 8-328307-1 |
| MS25274/2 CLASS 1 & 2 | 1000 | LOOSE PIECE | 328307 |

**AMP INCORPORATED
CUSTOMER SERVICE SYSTEM**

| | |
|--|--|
| FOR ADDITIONAL PRODUCT INFORMATION OR COPIES OF DRAWINGS AND TECHNICAL DOCUMENTS | PRODUCT INFORMATION CENTER 1-800-522-6752 |
| FOR APPLICATION TOOLING INFORMATION | TOOLING ASSISTANCE CENTER 1-800-722-1111 |
| FOR ORDER ENTRY | 1-800-526-5142 |

MAX RECOMMENDED OPERATING TEMPERATURE:
105°C [221°F]

VOLTAGE RATING:
-

CIRCULAR MIL AREA:
0.26mm²-1.65mm²
[509-3,248]

THIS DRAWING IS A CONTROLLED DOCUMENT FOR AMP INCORPORATED. IT IS SUBJECT TO CHANGE AND THE CONTROLLING ENGINEERING ORGANIZATION SHOULD BE CONTACTED FOR THE LATEST REVISION.

| DIMENSIONS: | TOLERANCES UNLESS OTHERWISE SPECIFIED. |
|-------------|--|
| mm [in] | |
| | 0 PLC ±- |
| | 1 PLC ±- |
| | 2 PLC ±0.20 [.008] |
| | 3 PLC ±- |
| | 4 PLC ±- |
| ANGLES | ±- |

MATERIAL
BODY, CU PER ASTM B152
INSUL, NYLON, COLOR, RED

FINISH
BODY, TIN PLATE
PER MIL-T-10727

| | | |
|------------------|----------|---------|
| DWN | L OLMEDA | 21MAR96 |
| CHK | M ELLIS | 21MAR96 |
| APVD | K FERREK | 21MAR96 |
| PRODUCT SPEC | - | - |
| APPLICATION SPEC | - | - |
| WEIGHT | - | - |

CUSTOMER DRAWING

AMP AMP Incorporated
Harrisburg, PA 17105-3608

NAME
SPARE WIRE CAP,
WIRE SIZE, 22-18 AWG

| | | |
|------|-----------|------------|
| SIZE | CAGE CODE | DRAWING NO |
| A3 | 00779 | C=328307 |

SCALE 8:1 SHEET 1 OF 1 REV F