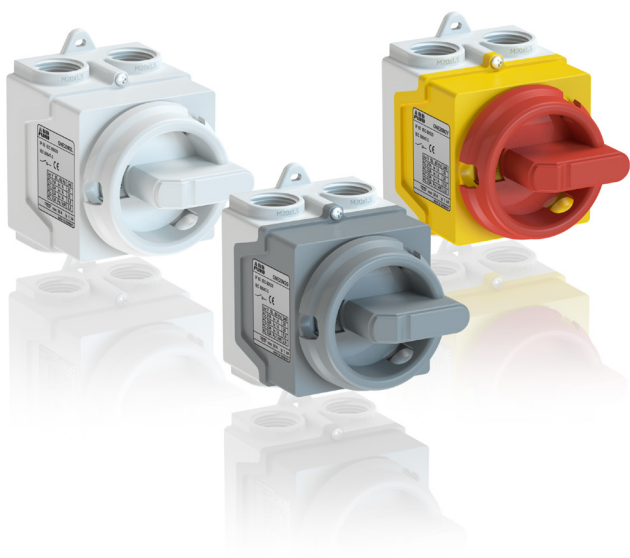


ONE20

Enclosed switches for residential and commercial installations



Thanks to a high technical reliability and a modern look, our enclosed switches ONE20 are the best fit for commercial and residential installations.

ONE20 switches can be used as main switches or for local isolation in various applications, such as HVAC, residential water pumps and heat pumps or commercial lighting.

High quality

ABB is synonym of quality: each ONE20 switch is tested and approved at the factory. The enclosures are made of durable materials with high UV resistance, which makes it suitable for indoor or outdoor use.

Reduced installation time

Compression glands are included in the delivery. They can be easily installed on the threaded knock-out cable entry.

Simple and modern design

The enclosure is compact and has the same size for 2, 3 and 4 pole types. ONE20 is available in three colors.

Maximized safety

The handle can be padlocked in the OFF position with up to three padlocks and in ON position with one padlock.

Features

- Available in 2-, 3- and 4- pole versions
- Thermal current (I_{th}) 20A
- Color options: light grey, dark grey, red-yellow
- Weather proof enclosure due to high IP class (IP67) and UV resistant material

Ordering information

ONE20M_W



Protection degree IP67. Compression glands with protection degree IP67 included in the delivery.

ONE20M_G



ONE20M_Y



Number of poles	Enclosure size [mm]			Type
	H	W	D	
Cover color: light grey. handle color: light grey				
2	92	65	84	ONE20M2W
3	92	65	84	ONE20M3W
4	92	65	84	ONE20M4W
Cover color: dark grey. handle color: dark grey				
2	92	65	84	ONE20M2G
3	92	65	84	ONE20M3G
4	92	65	84	ONE20M4G
Cover color: yellow. handle color: red				
2	92	65	84	ONE20M2Y
3	92	65	84	ONE20M3Y
4	92	65	84	ONE20M4Y

ONE201GB 15-06, 1SCC340002B0201

Technical data

Data according to IEC 60947-3		ONE20M2_	ONE20M3_	ONE20M4_
Impulse withstand voltage, U _{imp}	kV	6	6	6
Rated operational voltage, U _e	V	240	415	415
Rated insulation voltage	Pollution degree 3 V	690	690	690
Rated thermal current and rated operational current AC20/DC20	ambient 40°C In enclosure	A	20	20
Rated operational current, AC-21A and AC-22A	240V up to 415V	A	20	20
Rated operational current, AC-23A	230V up to 400V	A/kW	9.8/2.6	9.8/2.6
Rated operational current and power, AC-3	230V up to 400V	A/kW	8.4/2.2	8.4/2.2
Rated conditional short circuit current, I _p (rms)	kA	1	1	1
Maximum back-up fuse link	A	20	20	20
Cu-wire size suitable for terminal	mm ²	0.5-4	0.5-4	0.5-4
Cable for compression glands, min-max diameter	mm	7-12	7-12	7-12

For more information please contact:

ABB Oy

Breakers and Switches

P.O. Box 622

FI-65101 Vaasa, Finland

Phone: +358 10 22 11

Fax: +358 10 22 45708

E-Mail: firstname.surname@fi.abb.com

www.abb.com

Power and productivity
for a better world™

