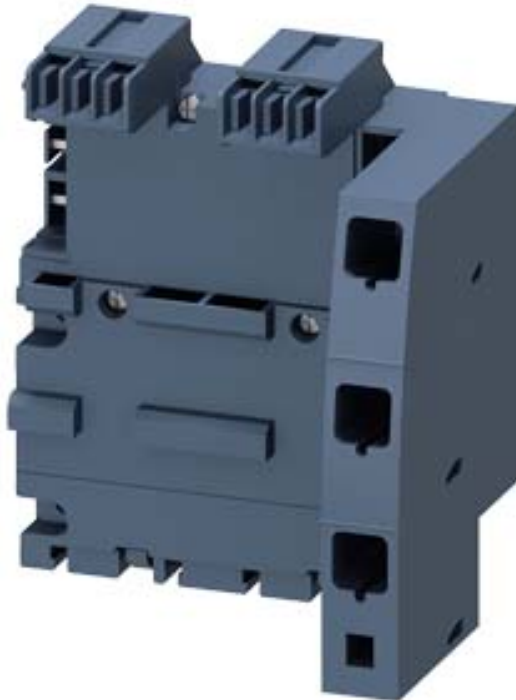


3-PHASE BUSBAR WITH INFEED RIGHT, FOR 2
CIRCUIT-BREAKERS, SIZE S00 UND S0



General technical data:

product brand name		SIRIUS
Product designation		3-phase busbars with infeed
Design of the product		for 2 switches with infeed on the right
Size of the circuit-breaker		S00, S0
Suitability for use		circuit-breakers 3RV2

Installation/ mounting/ dimensions:

Mounting position		any
Mounting type		snap-on fastening on 35 mm standard rail
Width	mm	110
Height	mm	129
Depth	mm	86.5
Required spacing for live parts		
• upwards	mm	10
• Backwards	mm	0
• at the side	mm	0
Required spacing for grounded parts		
• upwards	mm	10

- Backwards
- at the side

mm	0
mm	0

Required spacing with side-by-side mounting

- upwards
- Backwards
- at the side

mm	10
mm	0
mm	0

Certificates/ approvals:

Certificate of suitability	CE / UL / CSA / CCC
-----------------------------------	---------------------

Shipping Approval



ABS

Further information

Information- and Downloadcenter (Catalogs, Brochures,...)

<http://www.siemens.com/industrial-controls/catalogs>

Industry Mall (Online ordering system)

<http://www.siemens.com/industrymall>

Cax online generator

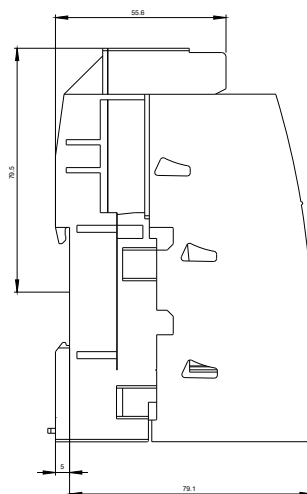
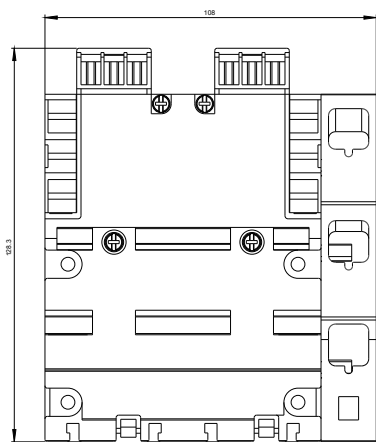
<http://support.automation.siemens.com/WW/CAXorder/default.aspx?lang=en&mlfb=3RV2917-1E>

Service&Support (Manuals, Certificates, Characteristics, FAQs,...)

<https://support.industry.siemens.com/cs/ww/en/ps/3RV2917-1E>

Image database (product images, 2D dimension drawings, 3D models, device circuit diagrams, EPLAN macros, ...)

http://www.automation.siemens.com/bilddb/cax_de.aspx?mlfb=3RV2917-1E&lang=en



last modified:

09/15/2016