

## **INTRODUCTION**

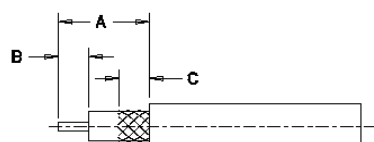
The detail shown within this instruction sheet gives guidance for the assembly of the chosen cable to connector. (Refer to the table for the applicable connector part numbers covered by this document).

The assembly instructions are in sketch form, which show the sequence of how to assemble.

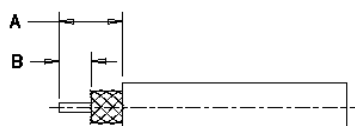
The sketches are relevant for both jacks and plugs. For clarity, only one type of connector is shown.

Cable preparation should be undertaken in accordance with normal safety precautions using commercially available cable stripping tools.

## ***PART NUMBERS, CABLE PREPARATION AND TOOLING TABLE***



**VERSION 1**



**VERSION 3**

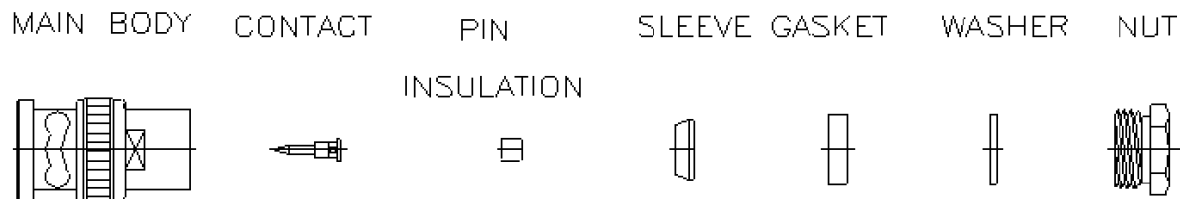
connector p/n	Cable Version	Cable Strip Dimensions			Hand Tool Part No.	Die Set Part No.
		A	B	C		
1-1478023-0	1	9.0	4.0	4.0	not required	not required
1-1478024-0	1	9.0	4.0	4.0	not required	not required
1-1478139-0	3	7.5	4.2	-	not required	not required
1-1478140-0	3	7.5	4.2	-	not required	not required
1-1478141-0	3	7.5	4.2	-	not required	not required
1-1478142-0	3	7.5	4.2	-	not required	not required
1-1478150-0	3	6.5	3.0	-	not required	not required
1-1478151-0	3	6.5	3.0	-	not required	not required
1-1478152-0	1	9.0	4.0	4.0	not required	not required
1-1478153-0	1	9.0	4.0	4.0	not required	not required
1-1478154-0	1	9.0	4.0	4.0	not required	not required
1-1478155-0	1	9.0	4.0	4.0	not required	not required
1-1478165-0	1	8.5	4.0	4.5	not required	not required
1-1478166-0	1	8.5	4.0	4.5	not required	not required
1-1478171-0	1	8.5	2.8	4.5	not required	not required

RS 511-9929

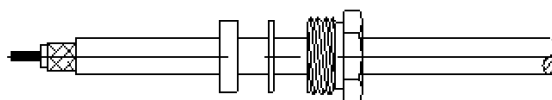
RS 512-0856

RS 512-0840

**CABLE TO CONNECTOR DIAGRAM FOLLOWS ON NEXT PAGE**

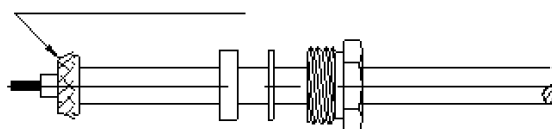


STEP 1



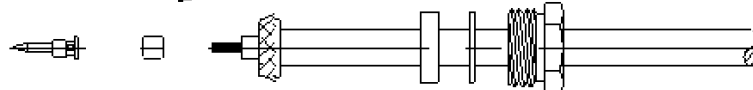
STEP 2

BRAID FOLD BACK



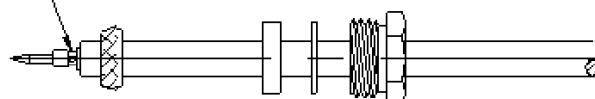
STEP 3

INSERT

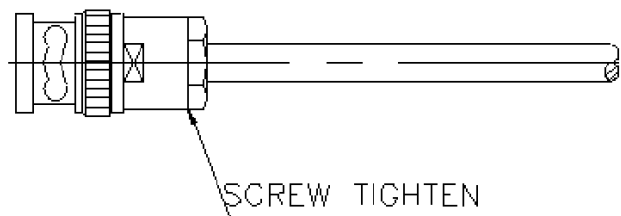


STEP 4

SOLDER



STEP 5



### REVISION RECORDS

REVISION	DESCRIPTION	DRAWN BY	CHECKED BY	APPROVED BY	DATE
A	RELEASE FOR PRODUCTION	R.GOODALL	F.W-KING	F.W-KING	12 NOV 2001