

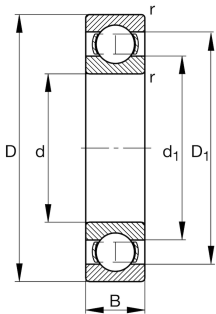
FAG

6076-M-C3

Deep groove ball bearing

Deep groove ball bearing 60...-M, single row, solid brass cage

Technical information



Your current product variant

Sealing	Without	Not sealed
Cage	M	Solid brass cage, rolling element guided
Tolerance class	PN	Normal (PN)
Dimensional / heat stabilization	S1	Rings dimensional stabilized up to 200°
Lubricant	Without	Bearing not greased
Radial internal clearance	C3 (Group 3)	Internal clearance larger than CN
Bore type	Z	Cylindrical

Main Dimensions & Performance Data

d	380 mm	Bore diameter
D	560 mm	Outside diameter
B	82 mm	Width
C _r	455,000 N	Basic dynamic load rating, radial
C _{0r}	750,000 N	Basic static load rating, radial
C _{ur}	21,700 N	Fatigue load limit, radial
n _G	1,910 1/min	Limiting speed
n _{gr}	1,470 1/min	Reference speed
≈m	68.8 kg	Weight



Mounting dimensions

d a min	398 mm	Minimum diameter shaft shoulder
D a max	542 mm	Maximum diameter of housing shoulder
r a max	4 mm	Maximum fillet radius

Dimensions

r min	5 mm	Minimum chamfer dimension
D 1	504 mm	Shoulder diameter outer ring
d 1	438.55 mm	Shoulder diameter inner ring

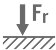





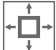
Temperature range

T min	-30 °C	Operating temperature min.
T max	200 °C	Operating temperature max.

Calculation factors

f 0	16.1	Calculation factor
-----	------	--------------------

Characteristics

	Radial load
	Axial load in one direction
	Axial load in two directions
	Grease Lubrication
	Oil Lubrication
	Not sealed
	Large bearing