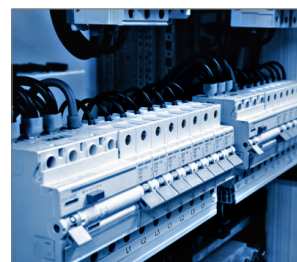
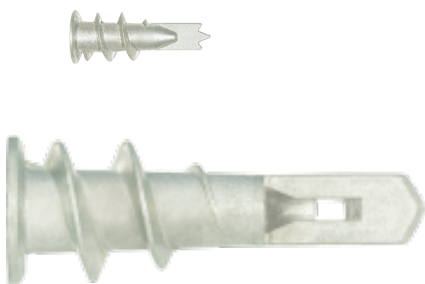


DRA Metal self-drill fixing for drywall

A self-drilling light-duty metal fixing for use in plasterboard sheets.



Product information

Features and benefits

- Flange prevents accidental push through in plasterboard.
- Short length ideally suited for dry lined walls.
- No drill required - simply pierce paper skin and screw home.
- Ideal for use with either a power or manual Pozidriv screwdriver.

Applications

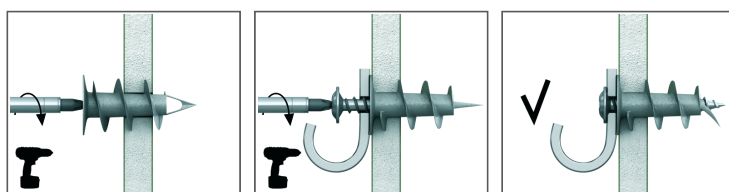
- Securing wall and ceiling fittings, installing hooks and brackets, etc.
- Fixing electrical boxes, sanitary ware, cable trunking, etc.
- Installing shelving units and wooden battens.

Base materials

Approved for use in:

- Plasterboard

Installation guide



1. Using a PZ2 screwdriver, push fixing point firmly into the board until thread engages.
2. Maintaining a firm pressure, screw in fixing until flush with the base material.
3. Place fixture in position, insert screw and tighten until secure.