

Features

- Miniature housing
- Sensitivity adjustment via potentiometer
- IO-Link
- Excellent black/white behaviour
- Immunity to mutual interferences

RS PRO Photoelectric Sensor

RS Stock No.: 0360244



RS PRO is the own brand of RS. The RS PRO Seal of Approval is your assurance of professional quality, a guarantee that every part is rigorously tested, inspected, and audited against demanding standards. Making RS PRO the Smart Choice for our customers.

Product Description

- Miniature housing
- Sensitivity adjustment via potentiometer
- IO-Link
- Excellent black/white behaviour
- Immunity to mutual interferences

General Specifications

Detection Type	Background Suppression
Sensing/Detection Range	10...300 mm
Operating Distance	15...250 mm
Standard Sensing Object	Object with 90% reflectance (standard white paper)
Light Source	Pinpoint LED
Diameter of the Light Spot	Ø 6 mm (100 mm) / Ø 10 mm (300 mm)
Sensing Distance Adjustment	30 ... 300 mm, 3/4-turn pot.
Output Type	PNP / Output 1: Light-on/IO-Link, Output 2: Dark-on
Response Time	≤ 500 us (normal)/≤ 1 ms (fine) /≤ 340 us (fast)
Connection/Terminal Type	4-pin M8
Indicator	LED
Interface	IO-Link
Minimum Operating Temperature	-25°C
Maximum Operating Temperature	+65°C

Electrical Specifications

Operating Supply Voltage	10...30 VDC
Current Consumption	≤ 100 mA
Voltage Drop	≤ (U _b -2.0 V)/approx. 0 V
Maximum Switching Frequency	≤ 1.5 kHz
Reverse Polarity Protection	YES
Overload Protection	YES
Short Circuit Protection	YES

Mechanical Specifications

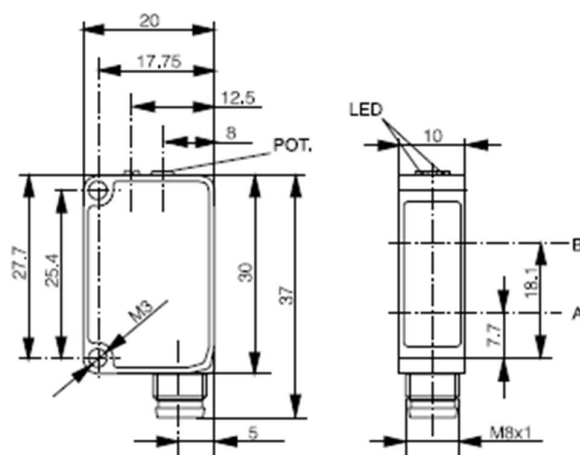
Body Style	Rectangular
Mounting Type	Screw
Housing Material	ABS
Lens/Face Material	PMMA
Dimensions	20 x 30 x 10 mm
Width / Diameter	10 mm
Length	30 mm
Depth	20 mm
Weight	15 g
Shock Resistance	IEC 60947-5-2
Vibration Resistance	IEC 60947-5-2

Protection Category

IP Rating	IP67
-----------	------

Approvals

Compliance/Certifications	CE / CULus / ECOLAB
---------------------------	---------------------



A: emitter axis B: receiver axis

BACKGROUND SHIFT

