



Instruction Leaflet

Magnetically Coupled Pump

RS stock no. 266-597

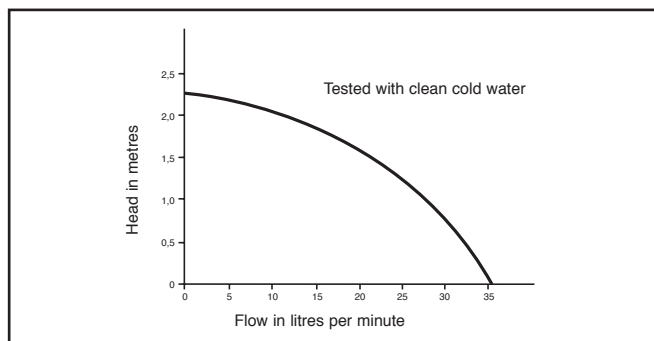
Description

This centrifugal pump is fully encapsulated, magnetically coupled and rated for continuous duty. The pump is ideally suited to recirculation applications and can be used with mild acids or alkalis, since the only components in contact with the pumped fluid are plastic and ceramic with a viton 'O' ring (see Chemical Compatibility).

Installation

Pump should be connected to pipework etc. using suitable fittings such as jubilee clips. Flexible hoses with internal diameters of 19mm may be used. (Avoid over-tightening as this may cause damage to the ports). The pump and pipework should be adequately supported and correctly fitted to avoid shock loading and strain on the pump and its ports. Do not mount pump vertically down (i.e. with ports below motor).

Performance



Operation and maintenance

Pump should have flooded suction since it does not self prime. Filters or restrictions should not be situated before the pump inlet. When priming, operate pump in short 10 seconds cycles to facilitate clearing the air. Ensure there are no leaks or blockages in pipework.

Do not operate pump against closed valve for longer than 30 seconds.

Where pumped fluid causes coating or deposition, periodic cleaning of pump internals may be necessary. This can be achieved by flushing through with an appropriate solvent or cleaning agent. Pump must be adequately ventilated to avoid overheating of motor.

Do not run pump dry.

Motor specification

Single phase 240V 50Hz

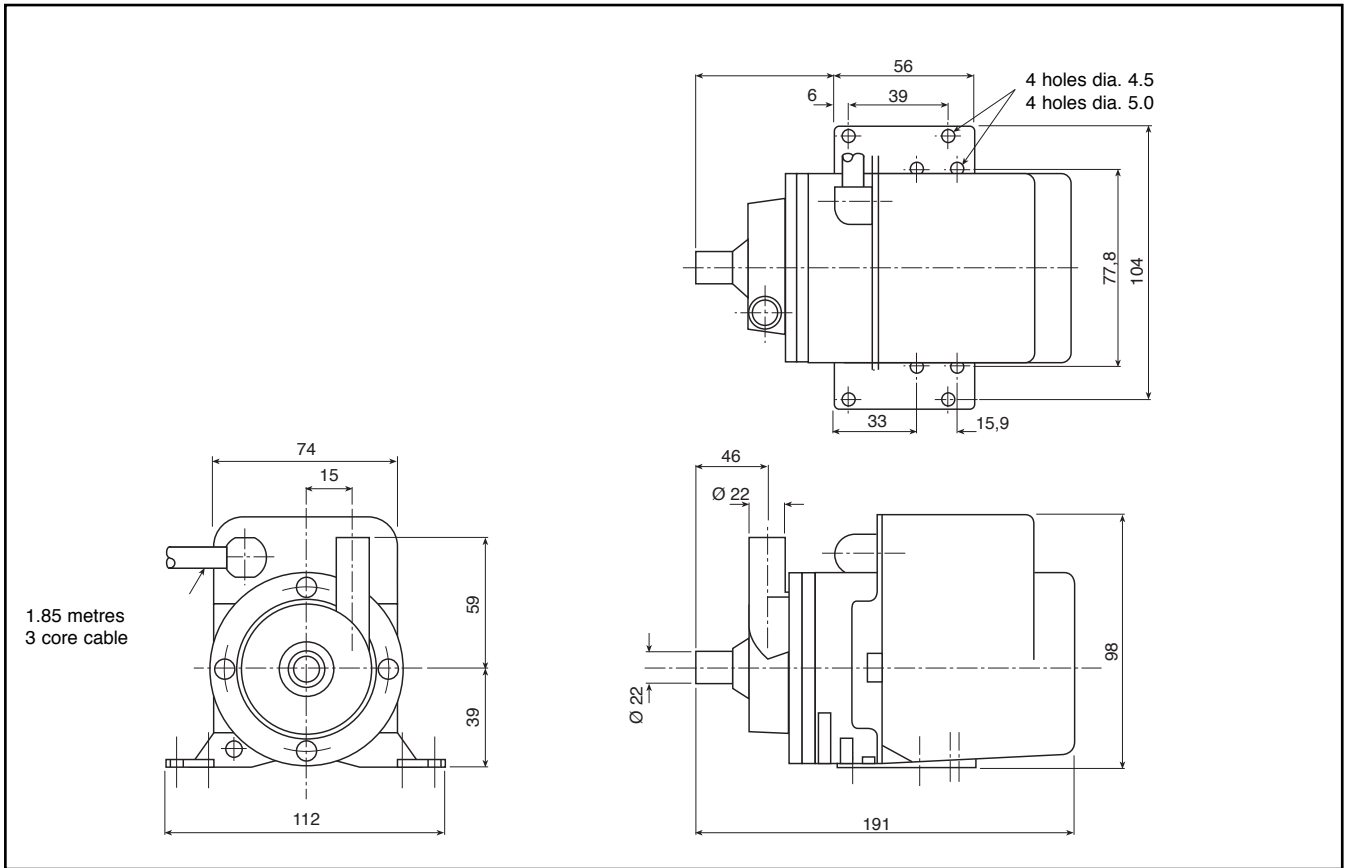
Input power 84W

Output power 18W

Maximum current 0.7A

Chemical compatibility

Aluminium chloride (10%)
 Ammonium sulphate (50%)
 Aniline
 Antimony trichloride (10%)
 Arsenic acid
 Barium chloride
 Boric acid
 Calcium chloride
 Caster oil
 Chromic acid
 Citric acid (10%)
 Cod liver oil
 Copper sulphate
 Cresols
 Diesel oil
 Diethylene glycol
 Ferric chloride
 Formaldehyde (40%)
 Freon - 113
 Furfural
 Glycerol
 Hexane
 Hydrochloric acid (10%)
 Hydrochloric acid (36%)
 Hydrogen peroxide (35%)
 Hydrogen sulphide gas
 Iso-propanol
 Lactic Acid (90%)
 Linseed Oil
 lubricating oil
 Magnesium Chloride
 Mercuric Chloride
 Molasses
 Nickel Chloride
 Oleic Acid
 Olive Oil
 Paraffin Oil
 Petrol
 Potassium Cyanide
 Potassium Permanganate (25%)
 Potassium Sulphate
 Rapeseed Oil
 Silicone fluids
 Silver Nitrate
 Sodium Carbonate (10%)
 Sodium Chloride (25%)
 Sodium Cyanide
 Sodium Nitrate
 Stannic Chloride
 Sulphur Dioxide
 Tetrachloroethane
 Tricetyl Phosphate
 Water (distilled)
 Water (sea)
 White Spirit
 Wine
 Zinc Chloride (Ag. sol)



The information provided in RS technical literature is believed to be accurate and reliable; however, RS Components assumes no responsibility for inaccuracies or omissions, or for the use of this information, and all use of such information shall be entirely at the user's own risk. No responsibility is assumed by RS Components for any infringements of patents or other rights of third parties which may result from its use. Specifications shown in RS Components technical literature are subject to change without notice.