

Rittal – The System.

Faster – better – everywhere.

PSM socket modules – DK 7856.082

Date : Apr 26, 2021

ENCLOSURES

POWER DISTRIBUTION

CLIMATE CONTROL

IT INFRASTRUCTURE

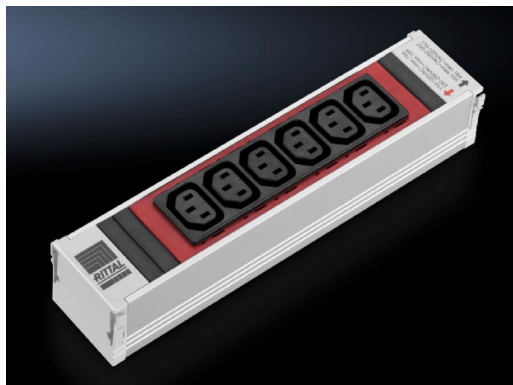
SOFTWARE & SERVICES

FRIEDHELM LOH GROUP



PSM socket modules – DK 7856.082

created: 26.04.2021 build on www.rittal.com/uk-en



Product description

Design: non-switchable

Description: The modular system facilitates basic configuration of the racks, thanks to a vertical support rail with single-/3-phase infeed. The various socket modules to supply the active components may be snap-fitted into the support rail. The various modules, earthing pins, IEC320 etc. may be inserted into the support rail in any combination. This is easily achieved, even by non-electricians, thanks to the shock hazard protected plug & play system.

Material: Section: Aluminium, anodised
Socket inserts: Plastic (PA6 GF 30 V1)

Product description

Sockets: 6 x IEC 320 socket, C13, red - Red

Required number of module slots: 1

Dimensions: Length: 250 mm

Infeeds: Phases per infeed: 1~

Type of electrical connection: WAGO WINSTA MIDI

Thermal overcurrent protection: –

Packs of: 1 pc(s).

Weight/pack: 0.34 kg

Copper weight (kg per piece):	0
EAN:	4028177520318
Customs tariff number:	85369001
ETIM 7.0:	EC000330
ETIM 6.0:	EC000330
eCl@ss 8.0/8.1:	27142604
eCl@ss 6.0/6.1:	27142604
Product description:	DK PSM Plus socket module, C13, 6-way, red, non-switchable
Approvals	
Certificates:	EAC
Declarations:	Declaration of conformity