



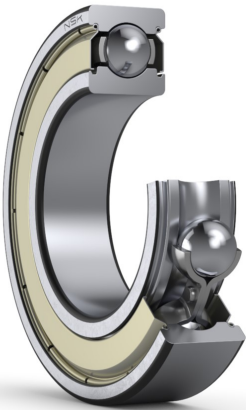
PRODUCT DATASHEET

Datasheet creation date: 2025/07/08 2:38 (UTC)



6206ZZ

Single-Row Deep Groove Ball Bearings



Parts Number

6206ZZC3

Boundary Dimensions

d	30	mm	Bore diameter
D	62	mm	Outside diameter
B	16	mm	Width
r (min.)	1	mm	Chamfer dimension

Basic Load Ratings

Cr	21400	N	Basic dynamic load rating
C0r	11300	N	Basic static load rating

Speeds

Grease	12000	min-1	Grease lubrication
--------	-------	-------	--------------------

Abutment and Fillet Dimensions

da (min.)	35	mm	Diameter of shaft abutment
da (max.)	38.5	mm	Diameter of shaft abutment
Da (max.)	57	mm	Diameter of housing abutment
ra (max.)	1	mm	Radius of shaft or housing fillet
Dx (min.)	0	mm	Diameter of snap ring recess in the housing
Cy (max.)	0	mm	Distance from outer ring side face to snap ring back face

Calculation factors

fo	13.8	Factor
----	------	--------

Additional information

z	9	Number of Balls	
Dw	9.525	mm	Ball Diameter

Mass

Mass approx.	0.199	kg	Mass approx.
--------------	-------	----	--------------

