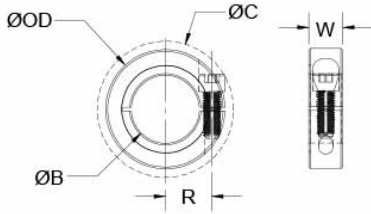




ENCL45-25MM-SS

Ruland ENCL45-25MM-SS, 25mm Thin Line Shaft Collar, 303 Stainless Steel, One-Piece Clamp Style, 45mm OD, 10mm Width



Description

Ruland ENCL45-25MM-SS is a one-piece shaft collar with a 25mm bore, 45mm OD, and 10mm width. The thin line design reduces weight and allows for use in confined spaces. It has the clamp style benefits of not marring the shaft, easy removability, and indefinite adjustability while commonly being used for guiding, spacing, stopping, mounting, and component alignment. Equipment manufacturers benefit from the tightly controlled face to bore perpendicularity (TIR of $\leq .002''$). Perpendicularity is critical for alignment when the shaft collar is used as a load bearing face, mechanical stop, or for mounting components such as gears or bearings. Proprietary processes have been developed by Ruland to maintain superior fit, finish, and holding power. ENCL45-25MM-SS is stamped with the Ruland name for ease of identification. Forged screws test beyond DIN 912 12.9 standards to ensure maximum holding power. ENCL45-25MM-SS is machined from solid bar stock to a fine burr free finish and sourced exclusively from North American mills. Ruland uses 303 stainless steel with hardware of like material for consistent corrosion resistance. It is RoHS2 and REACH compliant and manufactured in our Marlborough, MA factory under strict controls using proprietary processes.

Product Specifications

Bore B	25 mm	Bore Tolerance	+0.050 mm / +.012 mm
Outer Diameter OD	45 mm	Clearance Diameter C MAX	48.00 mm
Width W	10 mm	Width Tolerance	+0.076 mm / -.254 mm
Forged Clamp Screw	M4x12	Screw Material	18-8 300 Series Stainless Steel
Hex Wrench Size	3.0 mm	Screw Finish	Bright
Seating Torque	2.5 Nm	Screw Location R	19.00 mm
Number of Screws	1 ea	Material Specification	Type 303 Austenitic, Non-Magnetic Bar
Temperature	-40°F to 350°F -40°C to 176°C	Finish Specification	Bright
Country of Origin	USA	Weight (lbs.)	0.2330
UPC	63452913860		