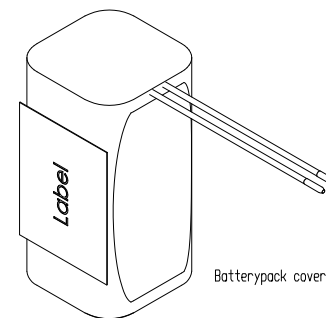


The supplier acknowledges that, with the acceptance of the drawing, he is in a position to manufacture the illustrated part in accordance with the drawing's requirements. The supplier is responsible for the accuracy of the drawing. The manufacturer is responsible for the accuracy of the drawing. The manufacturer is responsible for the accuracy of the drawing. The manufacturer is responsible for the accuracy of the drawing.

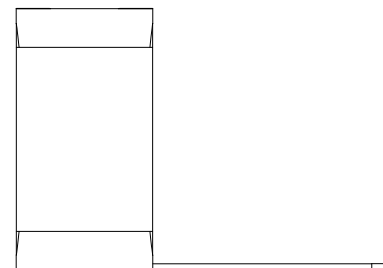
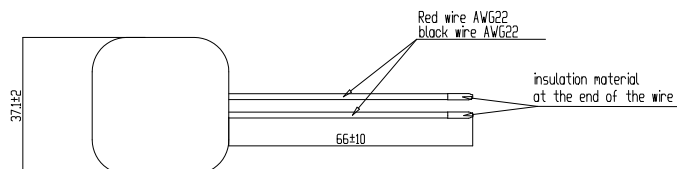
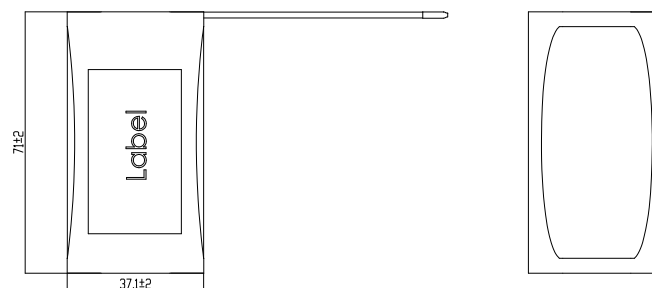
This drawing may not be used, reproduced or made available in any form without the written approval of the manufacturer.

Technische Daten/ technical data	:	Akkupack/ batterypack
Chemie/ chemistry	:	Lithium Ion
Zellenzahl/ no. of cells	:	4 Zellen/ cells ; 2S2P
Zellentyp/ cell type	:	INR18650 LGC MJ1
Kapazität/ capacity	:	nom. 7000mAh discharge at 0.2C min. 6700mAh discharge at 0.2C to 20°C; EV(Discharge End Voltage): 2.5V per cell
Innenwiderstand/ impedance	:	< 120mOhm (battery and safetyboard)
Nominalspannung/ nominal voltage	:	7.27V
Standard Ladespannung/ standard charge voltage	:	8.4V±1%
Standard Entladespannung/ standard discharge voltage	:	5.0V
Nominaler Ladestrom/ nominal charge current	:	0.5C
Maximaler Ladestrom/ maximum charge current	:	5000mA (limited by safetyboard)
Ladeendstrom/ charge end current	:	0.01C recommended
Maximaler Entladestrom/ maximum discharge current	:	5000mA (limited by safetyboard)
Anwendungstemperaturbereich/ ambient temperature range	:	0°C...+45°C charge -20°C...+60°C discharge -20°C...+30°C storage max. 1 year -20°C...+45°C storage max. 3months
Selbstentladung/ self discharge	:	≤ 5% / month at 20°C ≤ 10% / month at 30°C ≤ 20% / month at 40°C
Standards/ standards	:	UN 3480, Subsection 38.3 All cells and batterypacks type tested according to UN manual of test and criteria subsection 38.3

Technische Daten/ technical data	:	Sicherheitsschaltung/ safety board (0180-3029)
Überladeschutzspannung/ over charge voltage detection	:	4.3V±25mV per cell
Wiedereinschaltspannung/ over charge release voltage	:	4.1V±50mV per cell
Entladeabschaltspannung/ over discharge detection voltage	:	2.4V±50mV per cell
Wiedereinschaltspannung/ over discharge release voltage	:	3.0V±100mV per cell
Nominaler Lade/Entladestrom/ nominal operating current	:	5A
Entlade Abschaltstrom/ discharge cut off current	:	13A± 3A
Kurzschlusschutz/ short circuit protection	:	gegen äußeren Kurzschluss/ against external short circuit
Temperaturumschalter/ temperature switch	:	PTC : JK-P730 20V/7.3A at 25°C; 6.2A at 40°C
MOSFET	:	in Masse in Gnd
Rückstellkriterium/ release condition	:	Last trennen, Aktiv nach Anladen/ cut load, release after charging up
Leiterplattenmaterial/ pcb material	:	FR4
Nettogewicht/ net weight	:	196g
Standards	:	CE



Batterypack covered with 2 layers of blue shrinktube



Application range for inquiry				Allowable deviation general tolerances		Tolerance principle:		Model:		Material:	
				DIN ISO 2768-m		ISO 8015		Scale (DN A2):		All dimensions in mm	
				2016		Date		1:1		Weight:	
				12.10.		Name		Drawing name			
				JX		Li-Ion-7.27V-7000mAh-2S2P-block-PTC/LG with safetyboard					
				Approved by		Drawing number					
						2447-3049-20					
						Sheet					
						1/1					
Version				Change		Date		Name		Project: IS-206-003	
V1				change request DE-17-0071		14.11.17		DS		Replaced by:	
V0				created this D/S		12.10.16		JX		Replacement through:	