

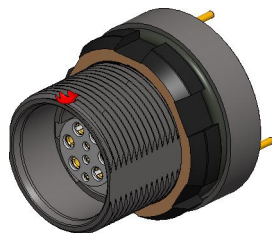
4

3

2

1

# HIGH DENSITY NEXUS RANGER SCREW LOCK OUTSIDE PANEL MOUNT JACK



SIZE 0

## SPECIFICATIONS

INGRESS RATING	IP68/1m IP69k WHEN MATED
OPERATING TEMPERATURE	-51°C TO 125°C
CORROSION RESISTANCE	96Hr SALT FOG
MECHANICAL ENDURANCE	5,000 MATING CYCLES
CONTACT RESISTANCE	PIN TO PIN - <10mOhm
	SHELL TO SHELL - <5mOhm
INSULATION RESISTANCE	>100MOhm
SHIELDING EFFECTIVENESS	>65dB
CONTACT MATERIAL	GOLD PLATED BRASS ALLOY

## NOTES:

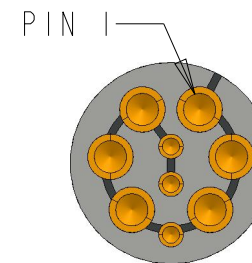
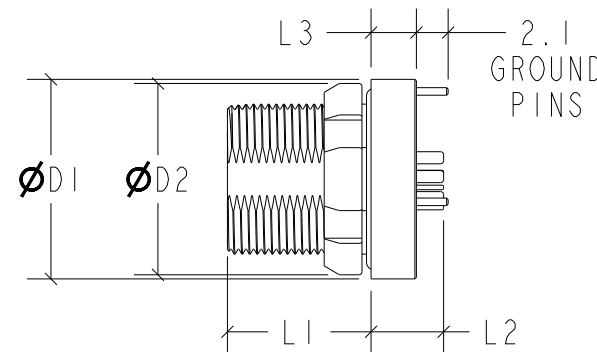
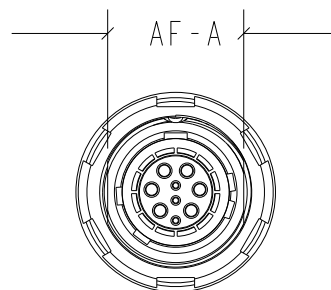
1. IN-LINE CONNECTOR IS DESIGNED TO BE ENCAPSULATED
2. SCREW STYLE LOCKING CONNECTOR
3. STANDARD PLATING IS CONDUCTIVE RUTHENIUM
4. SHIELD TERMINATED UNDER CRIMP BAND  
CRIMP EFFECTIVENESS DETERMINED BY TESTING TO ENSURE  
SHIELD TO SHELL CONTACT RESISTANCE IS ACHIEVED
5. THREAD LOCKER IS REQUIRED FOR ASSEMBLY
6. KEYING MUST MATCH MATING CONNECTOR

**CUI**

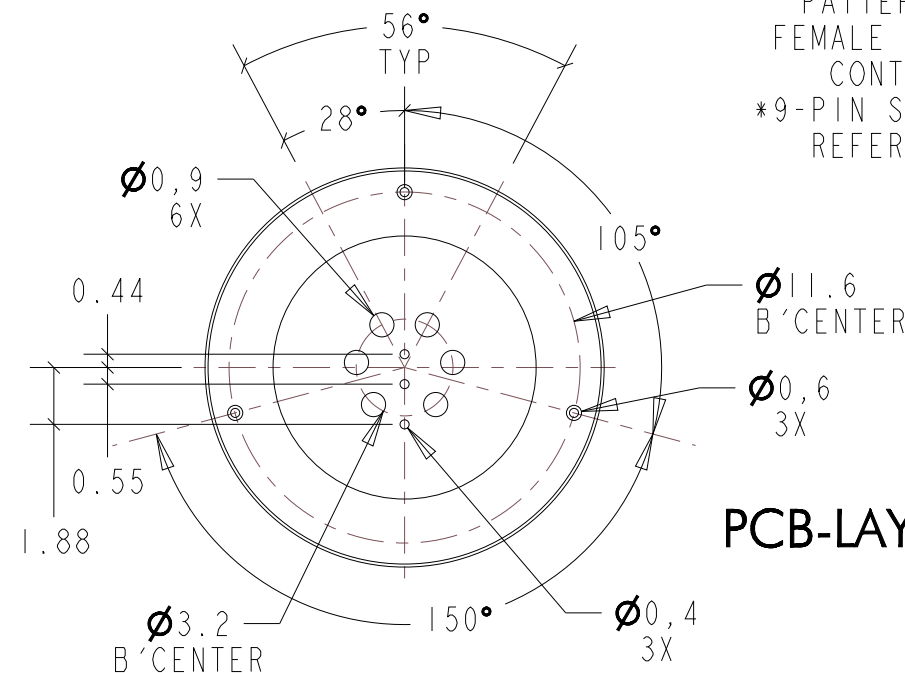
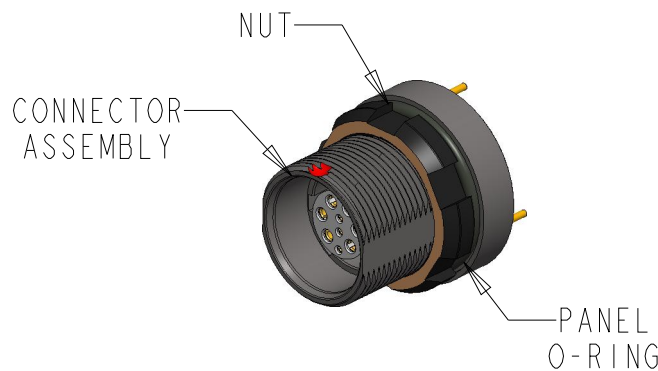
THIS DOCUMENT CONTAINS PROPRIETARY INFORMATION OF NEXUS, INCORPORATED  
AND SUCH INFORMATION MAY NOT BE DISCLOSED TO OTHERS FOR ANY PURPOSE OR  
USED FOR ANY PURPOSE WITHOUT THE WRITTEN CONSENT OF NEXUS.

A	NEW RELEASE	---	11/27/2024	
LET.	REVISION	CN #	DATE	CHK

SIZE	L1	L2	L3	ØD1	ØD2	AF-A	THREAD	PANEL
0	.374" [9,5]	.19" [4,8]	.12" [3,0]	.52" [13,2]	.51" [12,9]	.35" [9,0]	M10x0,50	.15" [4,0]



PATTERN FOR  
FEMALE SOLDER  
CONTACTS  
\*9-PIN SHOWN FOR  
REFERENCE\*



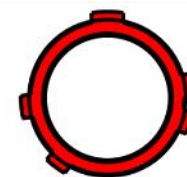
PCB-LAYOUT

## KEYING CONFIGURATIONS

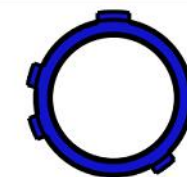
\*PATTERN OF MALE CONNECTOR SHOWN AT CONTACT END\*



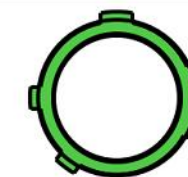
A - BROWN



B - RED



C - BLUE



D - GREEN

DWN. BY	BAM	DATE	11/27/2024
CHECKED BY		DATE	
APPR. BY		DATE	
UNLESS OTHERWISE SPECIFIED: DIMENSIONS ARE IN INCHES &/OR [mm] TOLERANCES:			
DECIMAL	.XX[X,X] ±.01[0,3]	.XXX[X,XX] ±.003[0,08]	
FRACTION	± 1/64"		
ANGLES	±.5°		

MATERIAL	
FINISH	
WEIGHT	SCALE =
TITLE	
HIGH DENSITY RANGER SCREW LOCK PANEL MOUNT JACK	
DO NOT SCALE DWG.	SHEET 1 OF 1

NEXUS STAMFORD, CONN	
SIZE B	DWG. NO. NX-GCXW_PCT