

# Relay Module - PLC-RPT- 24DC/2X21/FG



2910537

<https://www.phoenixcontact.com/in/products/2910537>

Please be informed that the data shown in this PDF document is generated from our Online Catalog. Please find the complete data in the user documentation. Our General Terms of Use for Downloads are valid.

---



PLC-INTERFACE, consisting of a relay base and plug-in safety relay with force-guided contacts in accordance with DIN EN 61810-3, Push-in connection, 2 changeover contacts, forcibly actuated, Input voltage: 24 V DC

---

## Product Description

The force-guided coupling relay module is approved for industrial control equipment in accordance with UL 508 (cULus listed). The requirements for type A in accordance with DIN EN 61810-3 are satisfied if the circuit is designed as 1 N/O contact / 1 N/C contact.

# Relay Module - PLC-RPT- 24DC/2X21/FG



2910537

<https://www.phoenixcontact.com/in/products/2910537>

## Commercial Data

Order Key	2910537
Packing unit	10 pc
Minimum order quantity	10 pc
Sales Key	CK6
Catalog Page	Page 370 (C-5-2019)
GTIN	4055626486055
Weight per Piece (including packing)	77.0 GRM
Weight per Piece (excluding packing)	68.0 GRM
Customs tariff number	85364190
Country of origin	DE

## Technical Data

### Notes

#### Utilization restriction

EMC note	EMC: class A product, see manufacturer's declaration in the download area
----------	---------------------------------------------------------------------------

### Product properties

Set consists of	2908777 REL-SR- 24DC/2X21/FG
Application	Forcibly guided contacts
Operating mode	100% operating factor
Mechanical service life	approx. $10^7$ cycles
B <sub>10d</sub>	600000 Cycles (AC1; 250 V / 6 A; 1 NO)
	900000 Cycles (AC1; 250 V / 3 A; 1 NO)
	1800000 Cycles (AC1; 250 V / 1,5 A; 1 NO)
	180000 Cycles (AC15; 250 V / 3 A; 1 NO)
	560000 Cycles (AC15; 250 V / 2 A; 1 NO)
	4600000 Cycles (AC15; 250 V / 0,75 A; 1 NO)
	360000 Cycles (DC13; 24 V / 3 A; 1 NO)
	740000 Cycles (DC13; 24 V / 1,5 A; 1 NO)
	4200000 Cycles (DC13; 24 V / 0,75 A; 1 NO)

#### Insulation characteristics

Overvoltage category	III
Pollution degree	2
Insulation	Safe isolation, reinforced insulation

### Electrical properties

Test voltage	4 kV <sub>rms</sub> (50 Hz, 1 min., winding/contact)
Test voltage Changeover contact/changeover contact	2.5 kV <sub>rms</sub> (50 Hz, 1 min., changeover contact/changeover contact)
Rated insulation voltage	250 V AC
Rated surge voltage	6 kV

### Input data

#### Coil side

Nominal input voltage U <sub>N</sub>	24 V DC
Input voltage range	20.2 V DC ... 32.4 V DC (20 °C)
Input voltage range in reference to U <sub>N</sub>	see diagram
Typical input current at U <sub>N</sub>	30 mA
Typical response time	10 ms
Typical release time	10 ms
Coil voltage	24 V DC

# Relay Module - PLC-RPT- 24DC/2X21/FG



2910537

<https://www.phoenixcontact.com/in/products/2910537>

Protective circuit	Damping diode
Operating voltage display	Yellow LED

## Output data

### Switching

Contact type	2 changeover contacts, forcibly actuated
Type of switch contact	Single contact
Drive and function	monostable
Contact material	AgNi
Maximum switching voltage	250 V AC/DC
Minimum switching voltage	5 V (10 mA)
Limiting continuous current	6 A
Maximum inrush current	6 A
Min. switching current	10 mA (5 V)
Interrupting rating (ohmic load) max.	144 W (24 V DC) 288 W (48 V DC) 88 W (110 V DC) 110 W (220 V DC) 1500 VA (250 V AC)
Switching capacity min.	150 mW
Switching capacity	3 A (24 V, DC13) 3 A (230 V, AC15)
Force-guided contacts in accordance with EN 61810-3	Type B

## Connection data

### Coil side

Connection method	Push-in connection
Stripping length	8 mm
Conductor cross section solid	0.14 mm <sup>2</sup> ... 2.5 mm <sup>2</sup>
Conductor cross section flexible	0.14 mm <sup>2</sup> ... 2.5 mm <sup>2</sup> 0.2 mm <sup>2</sup> ... 2.5 mm <sup>2</sup> (Single ferrule) 2x 0.5 mm <sup>2</sup> ... 1 mm <sup>2</sup> (TWIN ferrule)
Conductor cross section AWG	26 ... 14

### Contact side

Connection method	Push-in connection
Stripping length	8 mm
Conductor cross section solid	0.14 mm <sup>2</sup> ... 2.5 mm <sup>2</sup>
Conductor cross section flexible	0.14 mm <sup>2</sup> ... 2.5 mm <sup>2</sup> 0.2 mm <sup>2</sup> ... 2.5 mm <sup>2</sup> (Single ferrule) 2x 0.5 mm <sup>2</sup> ... 1 mm <sup>2</sup> (TWIN ferrule)
Conductor cross section AWG	26 ... 14

# Relay Module - PLC-RPT- 24DC/2X21/FG



2910537

<https://www.phoenixcontact.com/in/products/2910537>

## Dimensions

Width	14 mm
Height	80 mm
Depth	104 mm

## Environmental and real-life conditions

### Ambient conditions

Degree of protection	RT II (Relay) IP20 (Relay base) ≥ IP54 (Installation location)
Ambient temperature (operation)	-20 °C ... 60 °C
Ambient temperature (storage/transport)	-20 °C ... 85 °C
Altitude	≤ 2000 m

## Approval data

### UL, USA

Identification	UL 508 UL 508 Recognized
----------------	-----------------------------

### UL, USA / Canada

Identification	UL 508 UL 508 Recognized
----------------	-----------------------------

### Corrosive gas test

Identification	ISA-S71.04. G3 Harsh Group EN 60068-2-60
----------------	---------------------------------------------

## Standards and regulations

### Standards/regulations

Standards/regulations	EN 50178 DIN EN 61810-3
-----------------------	----------------------------

## Mounting

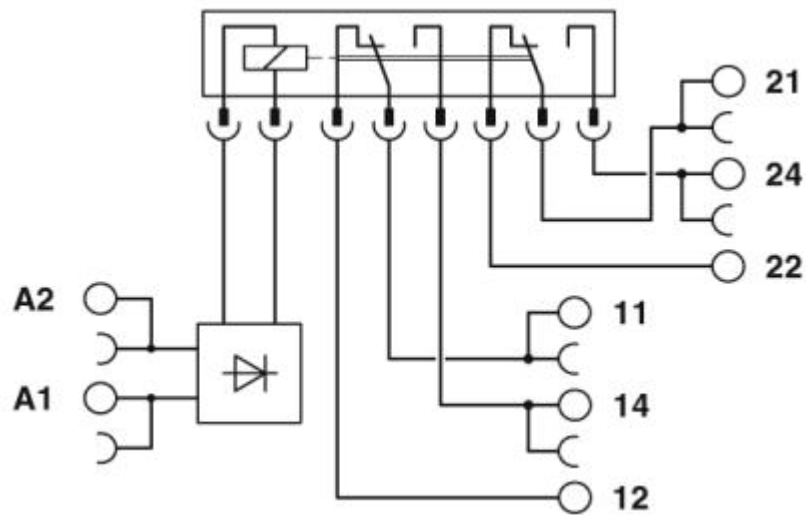
Mounting type	DIN rail mounting
Assembly instructions	in rows with zero spacing
Mounting position	any

2910537

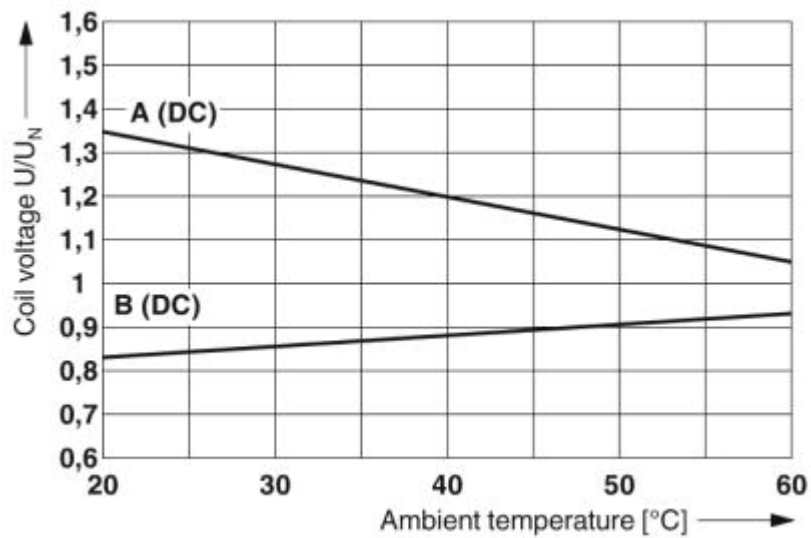
<https://www.phoenixcontact.com/in/products/2910537>

## Drawings

Circuit diagram



Diagram



Curve A: maximum continuous voltage at limiting continuous current

Curve B: minimum pick-up voltage for pre-excitation with  $U_N$  and limiting continuous current

# Relay Module - PLC-RPT- 24DC/2X21/FG




2910537

<https://www.phoenixcontact.com/in/products/2910537>


## Approvals

UL Listed 

cUL Listed 

EAC 

EAC 

DNV GL 

cULus Listed

# Relay Module - PLC-RPT- 24DC/2X21/FG



2910537

<https://www.phoenixcontact.com/in/products/2910537>

## Classifications

### ECLASS

ECLASS-9.0	27371601
ECLASS-10.0.1	27371601
ECLASS-11.0	27371601

### ETIM

ETIM 6.0	EC001437
----------	----------

### UNSPSC

UNSPSC 19.0	39122334
UNSPSC 20.0	39122334
UNSPSC 21.0	39122334



# Relay Module - PLC-RPT- 24DC/2X21/FG



2910537

<https://www.phoenixcontact.com/in/products/2910537>

## Environmental Product Compliance

REACH SVHC	Lead 7439-92-1
China RoHS	Environmentally Friendly Use Period = 50 years
	For details about hazardous substances go to tab "Downloads", Category "Manufacturer's declaration"

# Relay Module - PLC-RPT- 24DC/2X21/FG

2910537

<https://www.phoenixcontact.com/in/products/2910537>

## Accessories



Note: Applying some accessories below might limit this product.

### DIN rail

DIN rail - NS 35/ 7,5 PERF 2000MM - 0801733



DIN rail perforated, Standard profile, width: 35 mm, height: 7.5 mm, acc. to EN 60715, material: Steel, galvanized, passivated with a thick layer, length: 2000 mm, color: silver

### DIN rail

DIN rail - NS 35/ 7,5 UNPERF 2000MM - 0801681



DIN rail, unperforated, Standard profile, width: 35 mm, height: 7.5 mm, acc. to EN 60715, material: Steel, galvanized, passivated with a thick layer, length: 2000 mm, color: silver

# Relay Module - PLC-RPT- 24DC/2X21/FG

2910537

<https://www.phoenixcontact.com/in/products/2910537>

## DIN rail

DIN rail - NS 35/ 7,5 WH PERF 2000MM - 1204119



DIN rail perforated, Standard profile, width: 35 mm, height: 7.5 mm, acc. to EN 60715, material: Steel, Galvanized, white passivated, length: 2000 mm, color: silver

---

## DIN rail

DIN rail - NS 35/ 7,5 WH UNPERF 2000MM - 1204122



DIN rail, unperforated, Standard profile, width: 35 mm, height: 7.5 mm, acc. to EN 60715, material: Steel, Galvanized, white passivated, length: 2000 mm, color: silver

# Relay Module - PLC-RPT- 24DC/2X21/FG

2910537

<https://www.phoenixcontact.com/in/products/2910537>

## DIN rail

DIN rail - NS 35/ 7,5 AL UNPERF 2000MM - 0801704



DIN rail, unperforated, Standard profile, width: 35 mm, height: 7.5 mm, acc. to EN 60715, material: Aluminum, uncoated, length: 2000 mm, color: silver

---

## DIN rail

DIN rail - NS 35/ 7,5 ZN PERF 2000MM - 1206421



DIN rail perforated, Standard profile, width: 35 mm, height: 7.5 mm, acc. to EN 60715, material: Steel, galvanized, length: 2000 mm, color: silver

# Relay Module - PLC-RPT- 24DC/2X21/FG

2910537

<https://www.phoenixcontact.com/in/products/2910537>

## DIN rail

DIN rail - NS 35/ 7,5 ZN UNPERF 2000MM - 1206434



DIN rail, unperforated, Standard profile, width: 35 mm, height: 7.5 mm, acc. to EN 60715, material: Steel, galvanized, length: 2000 mm, color: silver

---

## DIN rail

DIN rail - NS 35/ 7,5 CU UNPERF 2000MM - 0801762



DIN rail, unperforated, Standard profile, width: 35 mm, height: 7.5 mm, acc. to EN 60715, material: Copper, uncoated, length: 2000 mm, color: copper-colored

# Relay Module - PLC-RPT- 24DC/2X21/FG

2910537

<https://www.phoenixcontact.com/in/products/2910537>

## DIN rail

DIN rail - NS 35/ 7,5 CAP - 1206560

DIN rail end piece, for DIN rail NS 35/7.5



---

## DIN rail

DIN rail - NS 35/15 PERF 2000MM - 1201730



DIN rail perforated, Standard profile, width: 35 mm, height: 15 mm, similar to EN 60715, material: Steel, galvanized, passivated with a thick layer, length: 2000 mm, color: silver

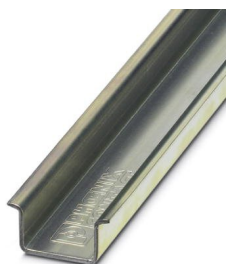
# Relay Module - PLC-RPT- 24DC/2X21/FG

2910537

<https://www.phoenixcontact.com/in/products/2910537>

## DIN rail

DIN rail - NS 35/15 UNPERF 2000MM - 1201714



DIN rail, unperforated, Standard profile, width: 35 mm, height: 15 mm, similar to EN 60715, material: Steel, galvanized, passivated with a thick layer, length: 2000 mm, color: silver

---

## DIN rail

DIN rail - NS 35/15 WH PERF 2000MM - 0806602



DIN rail perforated, Standard profile, width: 35 mm, height: 15 mm, similar to EN 60715, material: Steel, Galvanized, white passivated, length: 2000 mm, color: silver

# Relay Module - PLC-RPT- 24DC/2X21/FG

2910537

<https://www.phoenixcontact.com/in/products/2910537>

## DIN rail

DIN rail - NS 35/15 WH UNPERF 2000MM - 1204135



DIN rail, unperforated, Standard profile, width: 35 mm, height: 15 mm, similar to EN 60715, material: Steel, Galvanized, white passivated, length: 2000 mm, color: silver

---

## DIN rail

DIN rail - NS 35/15 AL UNPERF 2000MM - 1201756



DIN rail, unperforated, Standard profile, width: 35 mm, height: 15 mm, similar to EN 60715, material: Aluminum, uncoated, length: 2000 mm, color: silver



# Relay Module - PLC-RPT- 24DC/2X21/FG

2910537

<https://www.phoenixcontact.com/in/products/2910537>

## DIN rail

DIN rail - NS 35/15 ZN PERF 2000MM - 1206599



DIN rail perforated, Standard profile, width: 35 mm, height: 15 mm, similar to EN 60715, material: Steel, galvanized, length: 2000 mm, color: silver

---

## DIN rail

DIN rail - NS 35/15 ZN UNPERF 2000MM - 1206586



DIN rail, unperforated, Standard profile, width: 35 mm, height: 15 mm, similar to EN 60715, material: Steel, galvanized, length: 2000 mm, color: silver

# Relay Module - PLC-RPT- 24DC/2X21/FG

2910537

<https://www.phoenixcontact.com/in/products/2910537>

## DIN rail

DIN rail - NS 35/15 CU UNPERF 2000MM - 1201895

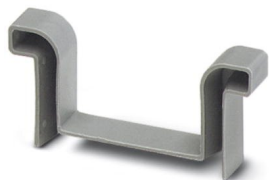


DIN rail, unperforated, Standard profile, width: 35 mm, height: 15 mm, similar to EN 60715, material: Copper, uncoated, length: 2000 mm, color: copper-colored

---

## DIN rail

DIN rail - NS 35/15 CAP - 1206573



DIN rail end piece, for DIN rail NS 35/15

# Relay Module - PLC-RPT- 24DC/2X21/FG

2910537

<https://www.phoenixcontact.com/in/products/2910537>

## DIN rail

DIN rail - NS 35/15-2,3 UNPERF 2000MM - 1201798



DIN rail, unperforated, Standard profile 2.3 mm, width: 35 mm, height: 15 mm, acc. to EN 60715, material: Steel, galvanized, passivated with a thick layer, length: 2000 mm, color: silver

---

## Partition plate

Partition plate - PLC-ATP BK - 2966841



Separating plate, 2 mm thick, required at the start and end of a PLC terminal strip. Furthermore, it is used for: visual separation of groups, safe isolation of different voltages of neighboring PLC relays in acc. with DIN VDE 0106-101, isolation

# Relay Module - PLC-RPT- 24DC/2X21/FG

2910537

<https://www.phoenixcontact.com/in/products/2910537>

## Screwdriver tools

Screwdriver tools - SZF 1-0,6X3,5 - 1204517



Actuation tool, for ST terminal blocks, also suitable for use as a bladed screwdriver, size: 0.6 x 3.5 x 100 mm, 2-component grip, with non-slip grip

---

## Labeled terminal marker

Labeled terminal marker - ZB 10 CUS - 0824941



Zack marker strip, can be ordered: Strip, white, labeled according to customer specifications, mounting type: snap into tall marker groove, for terminal block width: 10.2 mm, lettering field size: 10.15 x 10.5 mm, Number of individual labels: 10

# Relay Module - PLC-RPT- 24DC/2X21/FG

2910537

<https://www.phoenixcontact.com/in/products/2910537>

## Labeled terminal marker

Labeled terminal marker - ZB10,LGS:FORTL.ZAHLEN - 1053014



Zack marker strip, Strip, white, labeled, can be labeled with: CMS-P1-PLOTTER, printed horizontally: consecutive numbers 1 ... 10, 11 ... 20, etc. up to 91 ... 100, mounting type: snap into tall marker groove, for terminal block width: 10.2 mm, lettering field size: 10.15 x 10.5 mm, Number of individual labels: 10

---

## Labeled terminal marker

Labeled terminal marker - ZB10,QR:FORTL.ZAHLEN - 1053027



Zack marker strip, Strip, white, labeled, can be labeled with: CMS-P1-PLOTTER, Printed vertically: consecutive numbers 1 ... 10, 11 ... 20, etc. up to 91 ... 100, mounting type: snap into tall marker groove, for terminal block width: 10.2 mm, lettering field size: 10.15 x 10.5 mm, Number of individual labels: 10

# Relay Module - PLC-RPT- 24DC/2X21/FG

2910537

<https://www.phoenixcontact.com/in/products/2910537>

## Labeled terminal marker

Labeled terminal marker - ZB10,LGS:L1-N,PE - 1053412



Marker for terminal blocks, Strip, white, labeled, can be labeled with: CMS-P1-PLOTTER, horizontal: L1, L2, L3, N, PE, L1, L2, L3, N, PE, mounting type: snap into tall marker groove, for terminal block width: 10.2 mm, lettering field size: 10. 15 x 10.5 mm, Number of individual labels: 10

---

## Labeled terminal marker

Labeled terminal marker - ZB10,LGS:U-N - 1053438



Marker for terminal blocks, Strip, white, labeled, can be labeled with: CMS-P1-PLOTTER, horizontal: U, V, W, N, GND, U, V, W, N, GND, mounting type: snap into tall marker groove, for terminal block width: 10.2 mm, lettering field size: 10. 15 x 10.5 mm, Number of individual labels: 10

# Relay Module - PLC-RPT- 24DC/2X21/FG

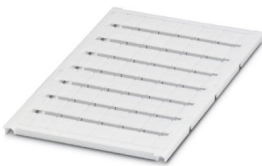


2910537

<https://www.phoenixcontact.com/in/products/2910537>

## Labeled terminal marker

Labeled terminal marker - UC-TM 10 CUS - 0824605



Marker for terminal blocks, can be ordered: by sheet, white, labeled according to customer specifications, mounting type: snap into tall marker groove, for terminal block width: 10.2 mm, lettering field size: 9.6 x 10.5 mm, Number of individual labels: 48

---

## Labeled terminal marker

Labeled terminal marker - UCT-TM 10 CUS - 0829623



Marker for terminal blocks, can be ordered: by sheet, white, labeled according to customer specifications, mounting type: snap into tall marker groove, for terminal block width: 10.2 mm, lettering field size: 8.9 x 9.6 mm, Number of individual labels: 36

# Relay Module - PLC-RPT- 24DC/2X21/FG

2910537

<https://www.phoenixcontact.com/in/products/2910537>

## Labeled terminal marker

Labeled terminal marker - ZB 12 CUS - 0824942

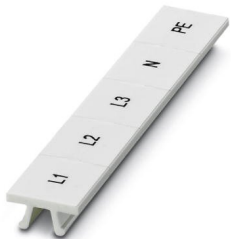


Zack marker strip, can be ordered: Strip, white, labeled according to customer specifications, mounting type: snap into tall marker groove, for terminal block width: 12.2 mm, lettering field size: 10.5 x 12.15 mm, Number of individual labels: 5

---

## Labeled terminal marker

Labeled terminal marker - ZB 12,LGS:L1-N,PE - 0812146



Zack marker strip, Strip, white, labeled, printed horizontally: L1, L2, L3, N, PE, mounting type: snap into tall marker groove, for terminal block width: 12.2 mm, lettering field size: 10.5 x 12.15 mm, Number of individual labels: 5



# Relay Module - PLC-RPT- 24DC/2X21/FG



2910537

<https://www.phoenixcontact.com/in/products/2910537>

## Labeled terminal marker

Labeled terminal marker - UC-TM 12 CUS - 0824613



Marker for terminal blocks, can be ordered: by sheet, white, labeled according to customer specifications, mounting type: snap into tall marker groove, for terminal block width: 12 mm, lettering field size: 11.45 x 10.5 mm, Number of individual labels: 40

---

## Labeled terminal marker

Labeled terminal marker - UCT-TM 12 CUS - 0829630



Marker for terminal blocks, can be ordered: by sheet, white, labeled according to customer specifications, mounting type: snap into tall marker groove, for terminal block width: 12 mm, lettering field size: 10.8 x 9.6 mm, Number of individual labels: 30

# Relay Module - PLC-RPT- 24DC/2X21/FG

2910537

<https://www.phoenixcontact.com/in/products/2910537>

## Terminal marking

Terminal marking - ZB 10:UNBEDRUCKT - 1053001



Zack marker strip, Strip, white, unlabeled, can be labeled with: PLOTMARK, CMS-P1-PLOTTER, mounting type: snap into tall marker groove, for terminal block width: 10.2 mm, lettering field size: 10.5 x 10.15 mm, Number of individual labels: 10

---

## Terminal marking

Terminal marking - UC-TM 10 - 0818069



Marker for terminal blocks, Sheet, white, unlabeled, can be labeled with: BLUEMARK ID COLOR, BLUEMARK ID, BLUEMARK CLED, PLOTMARK, CMS-P1-PLOTTER, mounting type: snap into tall marker groove, for terminal block width: 10.2 mm, lettering field size: 9.6 x 10.5 mm, Number of individual labels: 48

# Relay Module - PLC-RPT- 24DC/2X21/FG

2910537

<https://www.phoenixcontact.com/in/products/2910537>

## Terminal marking

Terminal marking - UCT-TM 10 - 0829142

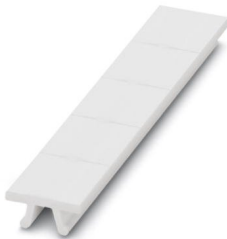


Marker for terminal blocks, Sheet, white, unlabeled, can be labeled with: TOPMARK NEO, TOPMARK LASER, BLUEMARK ID COLOR, BLUEMARK ID, BLUEMARK CLED, THERMOMARK PRIME, THERMOMARK CARD 2.0, THERMOMARK CARD, mounting type: snap into tall marker groove, for terminal block width: 10.2 mm, lettering field size: 8.9 x 9.6 mm, Number of individual labels: 36

---

## Terminal marking

Terminal marking - ZB 12:UNPRINTED - 0812120



Zack marker strip, Strip, white, unlabeled, can be labeled with: PLOTMARK, CMS-P1-PLOTTER, mounting type: snap into tall marker groove, for terminal block width: 12.2 mm, lettering field size: 12 x 10.5 mm, Number of individual labels: 5

# Relay Module - PLC-RPT- 24DC/2X21/FG



2910537

<https://www.phoenixcontact.com/in/products/2910537>

## Terminal marking

Terminal marking - UC-TM 12 - 0819194



Marker for terminal blocks, Sheet, white, unlabeled, can be labeled with: BLUEMARK ID COLOR, BLUEMARK ID, BLUEMARK CLED, PLOTMARK, CMS-P1-PLOTTER, mounting type: snap into tall marker groove, for terminal block width: 12 mm, lettering field size: 11.45 x 10.5 mm, Number of individual labels: 40

---

## Terminal marking

Terminal marking - UCT-TM 12 - 0829144



Marker for terminal blocks, Sheet, white, unlabeled, can be labeled with: TOPMARK NEO, TOPMARK LASER, BLUEMARK ID COLOR, BLUEMARK ID, BLUEMARK CLED, THERMOMARK PRIME, THERMOMARK CARD 2.0, THERMOMARK CARD, mounting type: snap into tall marker groove, for terminal block width: 12 mm, lettering field size: 10.8 x 9.6 mm, Number of individual labels: 30

# Relay Module - PLC-RPT- 24DC/2X21/FG

2910537

<https://www.phoenixcontact.com/in/products/2910537>

## Single relay

Single relay - REL-SR- 24DC/2X21/FG - 2908777



Safety relay with force-guided contacts in accordance with DIN EN 61810-3, contact type: 2 changeover contacts. The requirements for type A in accordance with DIN EN 61810-3 are satisfied if the circuit is designed as 1 N/O contact / 1 N/C contact.

---

## Power module

Power module - PLC-ESK GY - 2966508



Power terminal block, for the input of up to four potentials, for mounting on NS 35/7.5

# Relay Module - PLC-RPT- 24DC/2X21/FG

2910537

<https://www.phoenixcontact.com/in/products/2910537>

## Bridge

Bridge - FBST 500-PLC RD - 2966786



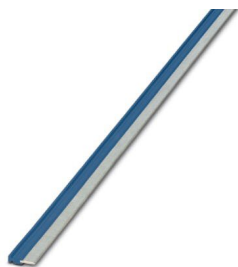
Continuous plug-in bridge, length: 500 mm, color: red

 Max. current carrying capacity: 32 A

---

## Bridge

Bridge - FBST 500-PLC BU - 2966692



Continuous plug-in bridge, length: 500 mm, color: blue

 Max. current carrying capacity: 32 A

# Relay Module - PLC-RPT- 24DC/2X21/FG

2910537


<https://www.phoenixcontact.com/in/products/2910537>

## Bridge

Bridge - FBST 500-PLC GY - 2966838



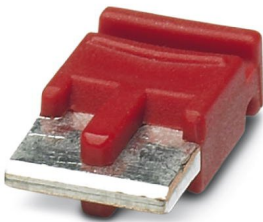
Continuous plug-in bridge, length: 500 mm, color: gray

 Max. current carrying capacity: 32 A

---

## Bridge

Bridge - FBST 6-PLC RD - 2966236



Single plug-in bridge, length: 6 mm, number of positions: 2, color: red

 Max. current carrying capacity: 6 A

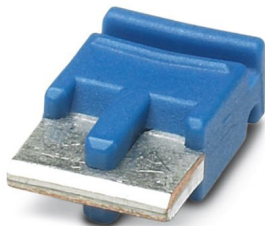
# Relay Module - PLC-RPT- 24DC/2X21/FG

2910537

<https://www.phoenixcontact.com/in/products/2910537>

## Bridge

Bridge - FBST 6-PLC BU - 2966812



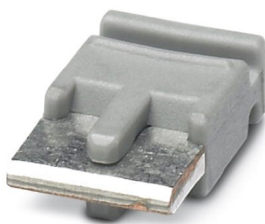
Single plug-in bridge, length: 6 mm, number of positions: 2, color: blue

 Max. current carrying capacity: 6 A


---

## Bridge

Bridge - FBST 6-PLC GY - 2966825



Single plug-in bridge, length: 6 mm, number of positions: 2, color: gray

 Max. current carrying capacity: 6 A



# Relay Module - PLC-RPT- 24DC/2X21/FG

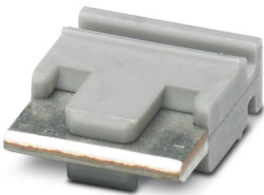
2910537

<https://www.phoenixcontact.com/in/products/2910537>

## Bridge

Bridge - FBST 8-PLC GY - 2967688

Single plug-in bridge, length: 8 mm, number of positions: 2, color: gray



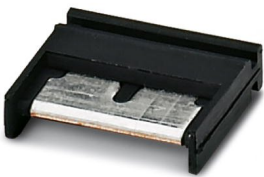
 Max. current carrying capacity: 6 A

---

## Bridge

Bridge - FBST 14-PLC BK - 2967691

Single plug-in bridge, length: 14 mm, number of positions: 2, color: black



 Max. current carrying capacity: 10 A

---

Phoenix Contact 2021 © - all rights reserved  
<https://www.phoenixcontact.com>

PHOENIX CONTACT (I) Pvt. Ltd.  
A-58/2, Okhla Industrial Area, Phase - II, New Delhi-110 020

+91.1275.71420  
[info@phoenixcontact.co.in](mailto:info@phoenixcontact.co.in)