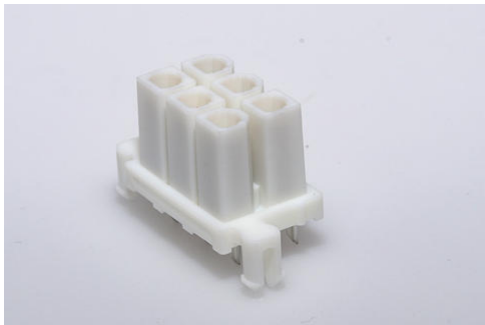




**Part Number :** [15247061](#)  
**Product Description :** Mini-Fit BMI Receptacle Header, 4.20mm Pitch, Dual Row, Vertical, with Snap-In Plastic Pegs, 2.54µm Tin (Sn), UL 94V-0, 6 Circuits  
**Series Number :** 42385  
**Status :** Active  
**Product Category :** PCB Headers and Receptacles  
**Engineering Number :** 42385-06B1



## Documents & Resources

### Drawings

[015247061\\_sd.pdf](#)  
[PK-42385-999-001.pdf](#)

### 3D Models and Design Files


[STEP AP242](#)  
[SOLIDWORKS](#)  
[Creo](#)  
[Symbol and Footprint \(Multi-Format\)](#)  
[SYM-A42385-06XX-001.zip](#)

### Specifications

[55560002-PS-CH-000.pdf](#)  
[55560002-PS-ES-000.pdf](#)  
[55560002-PS-SK-000.pdf](#)  
[PS-5556-002-001.pdf](#)  
[423850000-TS-000.pdf](#)  
[TS-5556-002-001.pdf](#)

## Product Environment Compliance

### Compliance

GADSL/IMDS	Compliant with Exemption 33; 44
China RoHS	 per SJ/T 11365-2006

EU ELV	Not Relevant
Low-Halogen Status	Low-Halogen per IEC 61249-2-21
REACH SVHC	Not Contained per D(2025)4165-DC (25 June 2025)
EU RoHS	Compliant per EU 2015/863

#### Compliance Statements

- EU RoHS
- REACH SVHC
- Low-Halogen

#### Industry Documents

- IPC 1752A Class C
- IPC 1752A Class D
- Molex Product Compliance Declaration
- IEC-62474
- chemSHERPA (xml)

#### Substances of Interest

- PFAS

#### EU RoHS Certificate of Compliance

#### Additional Product Compliance Information

## Part Details

### General

Status	Active
Category	PCB Headers and Receptacles
Series	42385
Description	Mini-Fit BMI Receptacle Header, 4.20mm Pitch, Dual Row, Vertical, with Snap-In Plastic Pegs, 2.54µm Tin (Sn), UL 94V-0, 6 Circuits
Application	Board-to-Board, Power, Wire-to-Board
Comments	Solder Type, With Pegs
Component Type	PCB Receptacle
Product Name	Mini-Fit BMI
UPC	800754209090

### Agency

CSA	LR19980
UL	E29179

## Electrical

Current - Maximum per Contact	9.0A
Grounding to PCB	No
Voltage - Maximum	600V AC (RMS)/DC

## Physical

Circuits (Loaded)	6
Circuits (maximum)	6
Color - Resin	Natural (White)
Durability (mating cycles max)	30
Flammability	94V-2
Glow-Wire Capable	No
Guide to Mating Part	Yes
Keying to Mating Part	None
Lock to Mating Part	None
Material - Metal	Brass
Material - Plating Mating	Tin
Material - Plating Termination	Tin
Material - Resin	Nylon
Net Weight	1.275/g
Number of Rows	2
Orientation	Vertical
Packaging Type	Tray
PCB Locator	Yes
PCB Retention	Yes
PCB Thickness - Recommended	1.00mm
Pitch - Mating Interface	4.20mm
Pitch - Termination Interface	4.20mm
Plating min - Termination	2.540µm
Polarized to Mating Part	Yes
Polarized to PCB	Yes
Temperature Range - Operating	-40° to +105°C

Termination Interface Style	Through Hole
-----------------------------	--------------

## Solder Process Data

Max-Duration	5
Lead-Free Process Capability	WAVE
Max-Cycle	1
Max-Temp	240

---

## Mates With / Use With

### Mates with Part(s)

Description	Part Number
Mini-Fit BMI Dual Row Plug Housings	<u>42475</u>
Mini-Fit BMI Right-Angle Dual Row Headers	<u>42404</u>
Mini-Fit BMI Right-Angle Dual Row Headers	<u>43810</u>
Mini-Fit BMI Vertical Dual Row Headers	<u>42440</u>
Mini-Fit BMI Vertical Dual Row Headers	<u>43879</u>
Mini-Fit BMI Vertical Dual Row Headers	<u>44068</u>