

Instruction manual | Mounting (Translation of the original instructions)

8087940

2018-05

[8087942]

FESTO

Pushbutton valve/toggle lever valve VHEF-P/-V

Festo SE & Co. KG

Ruiter Strasse 82
D-73734 Esslingen
Germany
+49 711 347-0
www.festo.com

1. Further applicable documents



All available documents for the product → www.festo.com/pk.

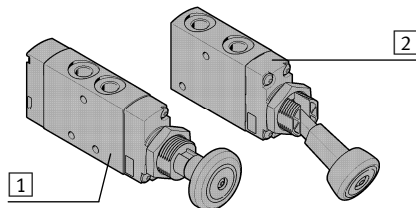
2. Safety

- Only mount the product on components that are in a condition to be safely operated.

3. Intended use

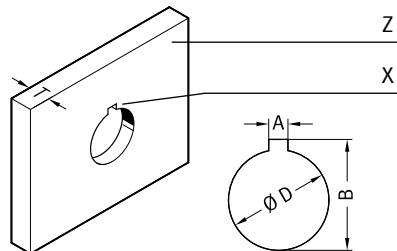
Manual control of cylinders with compressed air.

4. Scope of delivery



- 1 Pushbutton valve (1x)
VHEF-P...
- 2 Toggle lever valve (1x)
VHEF-V...

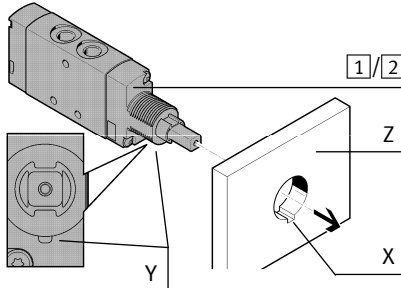
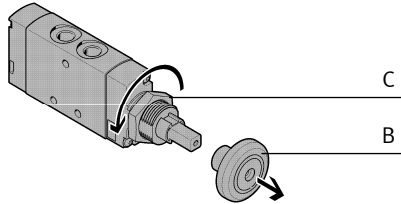
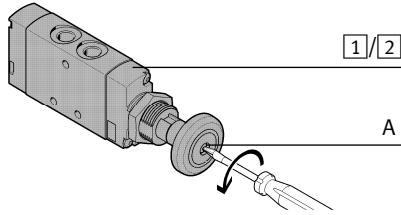
5. When mounting to a front plate



- Select a front plate (Z) with the thickness T.
- Drill a hole with diameter D.
- Mill a slot (X) with width A and depth B in the front plate (Z). The slot (X) is used to accommodate the protection against rotation for the valve 1/2.

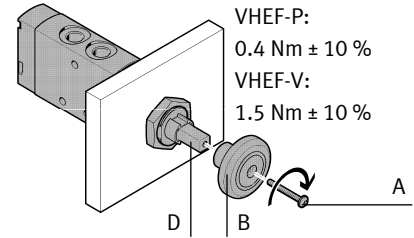
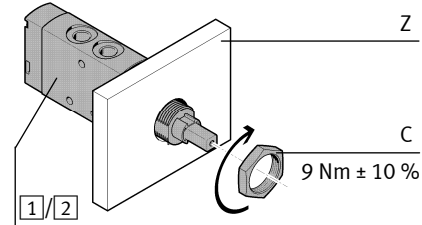
		$\varnothing D^{+0.2}$	T	A	B	
(Z)	Front plate	[mm]	22.3	1.2 ... 11	3.3	24

6. Mounting to a front plate



- Align the valve **1/2**.
- Undo screw (A) :
VHEF-P:
Internal serration \approx T10
VHEF-V:
Internal hexagon
socket \approx 2.5 mm
- Pull out pushbutton/
lever (B).
- Undo the nut (C) from
the thread.

- Position the valve **1/2**
in the hole in the front
plate (Z).
→ Protection against
rotation (Y) is situated in
the slot (X).

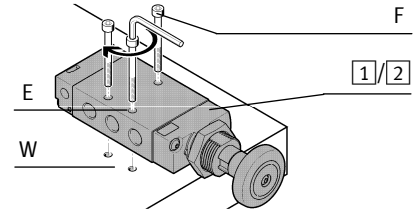


- Mount the valve **1/2**
using the nut (C) to the
front plate (Z) .

The pushbutton/lever (B) can be mounted to the square (D) offset by 90° respectively.

- Remove any foreign objects
from the pushbutton/
lever (B).
- Position pushbutton/
lever (B) on the square (D).
- Tighten screw (A).

7. Mounting with through bolts



- In case of unevenness of
the mounting surface (W)
use washers.
- To extend the distance
between valve **1/2** and
mounting surface (W):
- Mount the mounting kit
VAME-R4-20-PA if required.
- Mount the valve **1/2** to all through-holes (E) using screws (F) that are suitable for the installation situation. Screw (F): Thread size \leq M4.