



Cable socket, self-assembly

Product features

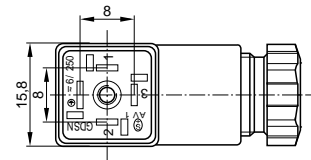
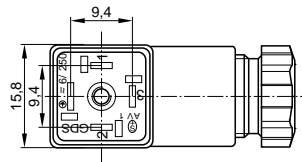
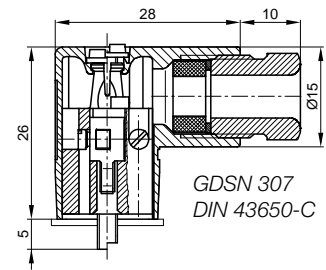
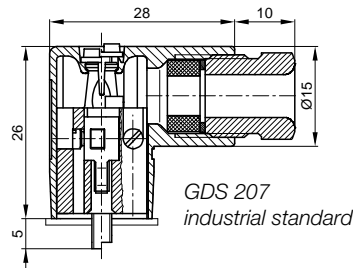
- for miniature valves, for example electro-magnetic pneumatic valves

Variations

- contact arrangement according to DIN 43650-C (contact distance 8 mm)
- contact arrangement according to industrial standard (contact distance 9.4 mm)

Further information

see technical data in the catalog
Rectangular connectors for automation technique
DS 280 490-440.



standard	poles	type	locking screw	type or connection	color	approvals	order no.
industrial standard (9,4 mm)	2+ ⊕	GDS 207	PG 7	screws	black		933 138-100
	3+ ⊕	GDS 307	PG 7	screws	grey		933 138-106
DIN 43650 C	2+ ⊕	GDSN 207	PG 7	screws	black		933 024-100
	3+ ⊕	GDSN 207	PG 7	screws	grey		933 024-106
	2+ ⊕	GDSN 307	PG 7	screws	black		933 137-100
	3+ ⊕	GDSN 307	PG 7	screws	grey		933 137-106
					black		933 023-100
					grey		933 023-106

Molded cable socket

Product description

preassembled and molded-on cable socket without integrated electronic circuitry

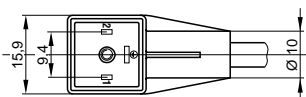
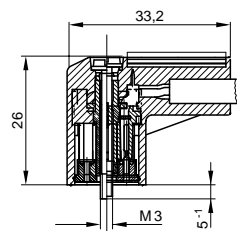
Variations

- PVC grey (additional colors, cable material, length... on application)
- 0° and 180° cable outlet
- connected protective earth (PE) allows 0° and 180° assembly

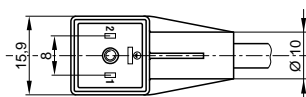
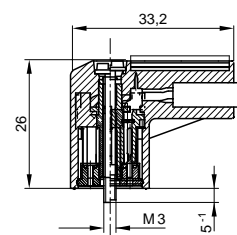
Further information

see technical data in the catalog
Rectangular connectors for automation technique
DS 280 490-440.

For tailor-made systems,
see page 24



GDS-K 2000
industrial standard



GDSN-K 2000
DIN 43650-C

poles	type	length	operating voltage	description	color	order no.
2+ ⊕ industrial standard (9,4 mm)	GDS-K 2000	2m	UC 250 V	central screw M3	black	933 194-111
		5m			grey	933 194-611
	GDS-K 2000 Z	2m	UC 250 V	central screw M3 180° cable outlet	black	933 194-112
					grey	933 194-612
		5m			black	933 197-111
					grey	933 197-611
3+ ⊕	GDS-K 3000	2m	UC 250 V	central screw M3	black	933 198-111
		5m			grey	933 198-611
	GDS-K 3000 Z	2m	UC 250 V	central screw M3 180° cable outlet	black	933 198-112
					grey	933 198-612
		5m			black	933 198-112
					grey	933 198-612
2+ ⊕ DIN 43650 C	GDSN-K 2000	2m	UC 250 V	central screw M 2,5	black	933 201-111
		5m			grey	933 201-611
	GDSN-K 2000 Z	2 m	UC 250 V	central screw M 2,5 180° cable outlet	black	933 201-112
					grey	933 201-612
		5 m			black	933 178-111
					grey	933 178-611
3+ ⊕	GDSN-K 2000PE 2	2 m	UC 250 V	central screw M 2,5 connected PE allows 0° or 180° cable outlet	black	933 178-112
		5 m			grey	933 178-612
	GDSN-K 3000	2 m	UC 250 V	central screw M 2,5	black	933 181-111
					grey	933 181-611
		5 m			black	933 181-112
					grey	933 181-612
GDSN-K 3000 Z	2 m	UC 250 V	central screw M 2,5 180° cable outlet	black	933 181-612	
				grey	933 935-111	
	5 m			black	933 935-611	
				grey	933 935-112	
3+ ⊕	GDSN-K 3000	2 m	UC 250 V	central screw M 2,5	black	933 935-612
		5 m			grey	933 182-111
	GDSN-K 3000 Z	2 m	UC 250 V	central screw M 2,5 180° cable outlet	black	933 182-111
		5 m			grey	933 182-611
3+ ⊕	GDSN-K 3000	2 m	UC 250 V	central screw M 2,5	black	933 182-112
		5 m			grey	933 182-612
	GDSN-K 3000 Z	2 m	UC 250 V	central screw M 2,5 180° cable outlet	black	933 185-111
		5 m			grey	933 185-611
3+ ⊕	GDSN-K 3000 Z	2 m	UC 250 V	central screw M 2,5 180° cable outlet	black	933 185-112
		5 m			grey	933 185-612

Molded cable socket, with electronic insert

Product description

preassembled and molded-on cable socket with integrated electronic circuitry and/or LED display

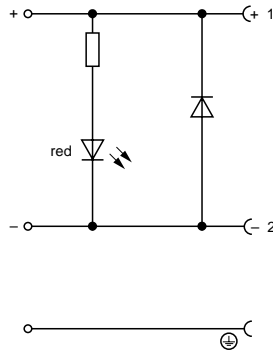
Variations

- PVC grey (additional colors, cable material, length... on application)
- 0° and 180° cable outlet

Further information

see technical data in the catalog
Rectangular connectors for automation technique DS 280 490-440.

For tailor-made systems,
see page 24



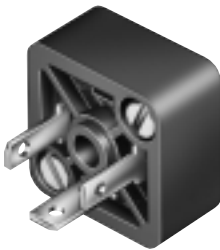
GDSL-K 2000 LED 24 HH
GDSNL-K 2000 LED 24 HH



poles	type	length	color	operating voltage	description	LED-color	order no.
2+ ⊕ industrial standard (9,4 mm)	GDSL-K 2000 LED 24 HH	2m	black grey	DC 24 V	function indicator with protective circuit	red	933 202-111
		5m	black grey			red	933 202-611
	GDSL-K 2000 Z LED 24 HH	2m	black grey	DC 24 V	function indicator with protective circuit	red	933 202-112
		5m	black grey			red	933 202-612
			black grey			red	933 205-111
		black grey	red			933 205-611	
	GDSL-K 2000 LED 24 GB1 ZZ	2 m	black grey	UC 24 V	LED-rectifier with Z-diode and function indicator	red	933 205-112
			black grey			red	933 205-612
		5 m	black grey			yellow	933 206-111
			black grey			yellow	933 206-611
	GDSL-K 2000 Z LED 24 GB1 ZZ	2 m	black grey	UC 24 V	LED-rectifier with Z-diode and function indicator	yellow	933 206-112
			black grey			yellow	933 206-612
5 m		black grey	yellow			933 209-111	
		black grey	yellow			933 209-611	
2+ ⊕ DIN 43650 C	GDSNL-K 2000 LED 24 HH	2 m	black grey	DC 24 V	function indicator with protective circuit	yellow	933 209-112
		5 m	black grey			yellow	933 209-612
	GDSNL-K 2000 Z LED 24 HH	2 m	black grey	DC 24 V	function indicator with protective circuit	red	933 186-111
			black grey			red	933 186-111
		5 m	black grey			red	933 186-611
			black grey			red	933 186-112
	GDSL-K 2000 LED 24	2 m	black grey	DC 24 V	function indicator with protective circuit	red	933 186-612
			black grey			red	933 189-111
		5 m	black grey			red	933 189-611
			black grey			red	933 189-112
	GDSNL-K 2000 LED 24	2 m	black grey	UC 24 V	function indicator with freewheeling diode	red	933 189-612
			black grey			red	933 936-111
5 m		black grey	red			933 936-611	
		black grey	red			933 936-112	
GDSNL-K 2000 Z LED 24	2 m	black grey	UC 24 V	function indicator with freewheeling diode	red	933 936-612	
		black grey			red	933 938-111	
	5 m	black grey			red	933 938-611	
		black grey			red	933 938-112	

Molded cable socket, with with electronic insert (continuation)

poles	type	length	color	operating voltage	description	LED-color	order no.
2+ ⊕ DIN 43650 C	GDSNL-K 2000 LED 24 GB1 ZZ	2 m	black	UC 24 V	LED-rectifier with Z-diode and function indicator	yellow	933 190-111
		5 m	grey			yellow	933 190-611
		5 m	black			yellow	933 190-112
	GDSNL-K 2000 Z LED 24 GB1 ZZ	2 m	grey	UC 24 V	LED-rectifier with Z-diode and function indicator	yellow	933 190-612
		5 m	black			yellow	933 193-111
		5 m	grey			yellow	933 193-611
GDSNL-K 2000 LED 48	2 m	black	UC 48 V	LED-rectifier with 180° cable outlet function indicator with freewheeling diode	yellow	933 193-112	
		grey			red	933 193-612	
		black			red	933 937-111	
		5 m	grey			red	933 937-611
		5 m	black			red	933 937-112
		5 m	grey			red	933 937-612



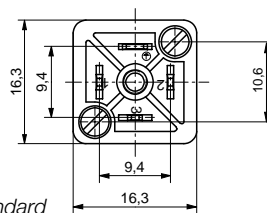
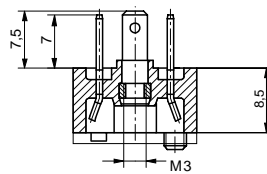
Appliance connector

Product description

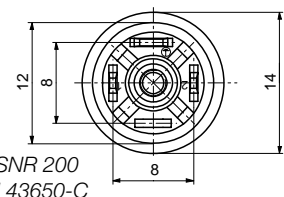
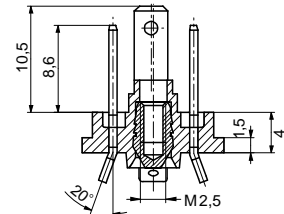
appliance connector for screw-down and for encapsulation

Further information

see technical data in the catalog
Rectangular connectors
for automation technique
DS 280 490-440.



GSSA 300
Industrial standard



GSSNR 200
DIN 43650-C

poles	type	description	approvals	order no.
2+ ⊕ industrial standard (9,4 mm) DIN 43650 C	GSSA 200	central nut and 2 screws		933 117-100
	GSSR 200	central nut, for moulding or sealing		933 115-100
	GSSNA 200	central nut and 2 screws		933 110-100
	GSSNR 200	central nut, for moulding or sealing		933 113-100
3+ ⊕ industrial standard (9,4 mm) DIN 43650 C	GSSA 300	central nut with 2 screws		933 116-100
	GSSR 300	central nut, for moulding or sealing		933 114-100
	GSSNA 300	central nut with 2 screws		933 111-100
	GSSNR 300	central nut, for moulding or sealing		933 112-100



Accessories

Product description

flat gaskets

Variations

For applications where silicon cannot be used, Hirschmann offers alternative materials which have no restrictive effect on the temperature range.

Further information

see technical data in the catalog
Rectangular connectors
for automation technique
DS 280 490-440.



accessories	type	description	order no.	contact arrangement
cable socket	GDS 307-2	flat gasket NBR	730 185-002	industrial standard
	GDS 307-4	flat gasket ECO	730 314-002	industrial standard
	GDSN 307-4	flat gasket NBR	730 176-002	DIN 43650 C
appliance connector	GDSN 307-5	flat gasket ECO	730 310-002	DIN 43650 C
	GSSA 300-5	flat gasket NBR	730 233-002	industrial standard
	GSSA 300-6	flat gasket ECO	730 312-002	industrial standard
	GSSNA 300-5	flat gasket NBR	730 232-002	DIN 43650 C
	GSSNA 300-6	flat gasket ECO	730 365-002	DIN 43650 C

Crimp method

Product features

- crimping contacts
- crimping tool
- ejection tool

Further information

see technical data in the catalog
Rectangular connectors
for automation technique
DS 280 490-440.



	type	description	order no.
contacts 0,5-1,5 mm copper alloy tin-plated	RBC 630	folded engaging crimp contact BO crimp	732 425-022
	RBCB 630	folded engaging crimp contact BO crimp, coiled	732 384-001
tools	RMC 480	flat crimping contact B crimp	731 470-021
	XZC 0700	manual crimpint tool for B and O crimp with 3 profiles	932 507-001
	XWA 630	ejector tool for folded crimp contacts	931 996-001