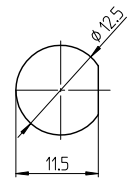


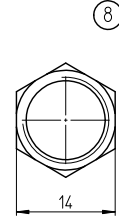
Notes:

- Operating temperature -20°C to +70°C
- Operating Force MAX 29,4N
- All materials and finishes comply with RoHS directive

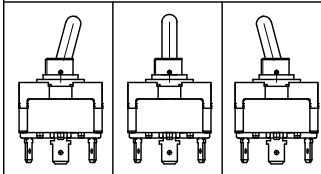
Mounting Hole



Nut



Function Chart



Specifications					
Rating	Initial Contact Resistance	Insulation Resistance	Dielectric Strength	Endurance	
AC 125V 20A AC 250V 20A DC 30V 20A	MAX 10 milliohms at DC 2 ~ 4V 1A	MIN 1000 M Ohms at DC 500V	AC 1.5kV/1 min (AC 1.8kV/1 sec)	electrically 20.000 cycles at 20 cycles/min (rated load resistive)	TE PN      Part
				mechanically 40.000 cycles at 20 cycles/min	Terminals 1 and 2      Terminals 2 and 3
					7-6437630-0      AWTD1504      ON      NONE      ON
					7-6437630-1      AWTE1504      ON      OFF      ON
					7-6437630-4      AWTF1504      ON      NONE      (ON)
					7-6437630-5      AWTG1504      (ON)      OFF      (ON)
					7-6437630-6      AWTH1504      ON      OFF      (ON)

(ON) : momentary action  
 OFF : mechanical position without electrical connection  
 NONE : no mechanical position

Materials Chart

PART NO.	PART NAME	MATERIAL/SURFACE:	OPTIONAL DESCRIPTION
1	Case	PM-EG	
2	F Contact	Silver alloy + C3602BD	
3	Common Contact	C3602BD	
4	Terminal	C2680R	
5	Frame	SPCC	EP-Fe/Zn4/CM
6	Bushing	Zinc alloy	EP-Zn/Cu5,Ni10b
7	Actuator	C3602BD-F	EP-Cu/Ni3,Cr1b
8	Nut	C3602BD	EP-Cu/Ni3b
9	L Washer	SK-5	EP-Fe/Ni3b
10	Shaft	SUS	
11	Rubber seal	NBR	
12	Insert molded rubber	Silicon rubber	

TOLERANCES UNLESS OTHERWISE SPECIFIED ACCORDING TO ISO 8015 and ISO 2768-I						DIMENSIONS: mm	
test dimen. / Prüfmaß: □, auxiliary dimen. / Hilfsmaß: ( ), theor. dimen. / theor. Maß: □□□□						production control dimen. / Fertigungs-kontr.maß: [ ] , dimen. for measure. technology / messtechn. rel. Maß: [ ] ,	
				DEPARTMENT	D&E		
				DRAWER	05.09.2007 SA008712		
				CHECKED			
				APPROVED			
1	5.11.7	WEH	Part Numbers added				
ECR-NO:	DATE	NAME	INFO	APPROVED	DATE	NAME	

SCALE:      NAME:      DWG NO.:      C=1968500

**Power Toggle Switch single pole**

Panel Mounting Watertight

OPTIONAL NO.:      Customer Drawing

REPLACEMENT FOR:      DWG LOC NO: IF      SHEET: 1 OF 1      REVISION:      B      A 2

THIS DRAWING IS A CONTROLLED DOCUMENT. HANDWRITTEN CHANGES ARE NOT ALLOWED

THE INFORMATION IS CONFIDENTIAL AND PROPRIETARY TO TYCO ELECTRONICS AUSTRIA GMBH, AND ITS WORLDWIDE SUBSIDIARIES AND AFFILIATES. IT MAY NOT BE DISCLOSED TO ANYONE OTHER THAN TYCO ELECTRONICS PERSONNEL WITHOUT WRITTEN AUTHORIZATION FROM TYCO ELECTRONICS AUSTRIA.