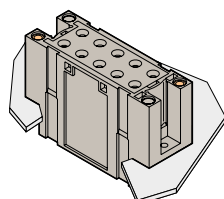


ESSAILEC®

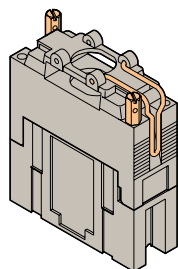
Multicircuits range 10, 20 points



Sockets



M10-D-C5A



M10-I-C5A-1

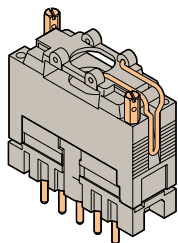
Application:
High density panel board wiring.
Alternative to large terminal strips.

Body: Polycarbonate
Conductive parts: Silver-plated

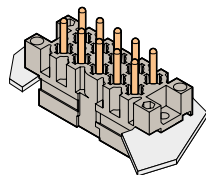
Technical data

| | IEC | |
|----------------------------|----------------------------------|----------------------------------|
| | Socket | Plug |
| | Quick-connect (C5A) | Pin BRE |
| Connecting capacity | | |
| | Rigid conductor | |
| | Flexible conductor | |
| Wire stripping length | 2.5 mm ² | See Datasheet 1SNC169040D1701 |
| | wire 0.22 - 0.34 mm ² | |
| | wire 0.75 - 6 mm ² | |
| Quick-connect | 5 x 0.8 mm | |
| Rated voltage | | 400 V |
| Impulse withstand voltage | | 4 kV |
| Pollution degree | | 3 |
| Rated current | | 8 A |
| Short-circuit current | | 25 A/5 s - 800 A/25 ms |
| Storage temperature range | | -25 °C ~ +70 °C |
| Working temperature range | | -10 °C ~ +55 °C |
| Front panel protection | | IP20 |

Plugs



FIM10-1 *



FIM10-I-1 *

Ordering details

| Description | Type | Order code | Packaging | Weight kg |
|-----------------------------|---------------------------|-----------------|-----------------|-----------|
| Sockets | | | | |
| Half-base mounting | Q-connect | M10-D-C5A | 1SNA166513R1000 | 10 0.06 |
| Rack mounting | Q-connect | M10-R-C5A | 1SNA166566R2500 | 10 |
| Reverse mounting | Q-connect | M10-I-C5A-1 | 1SNA166774R0500 | 10 |
| Reverse mounting | Q-connect | M20-I-C5A | 1SNA166777R0000 | 1 |
| Extension mounting | Q-connect | M10-P-C5A | 1SNA166772R0300 | 1 |
| | Other sockets: consult us | | | |
| Plugs | | | | |
| Plug for M10-D-C5A socket | FIM10-1 | 1SNA166516R1300 | 10 | 0.06 |
| Plug for M10-R-C5A socket | FIM10-R | 1SNA166573R2400 | 1 | |
| Plug for M10-I-C5A-1 socket | FIM10-I-1 | 1SNA166574R2500 | 1 | |
| Plug for M20-I-C5A socket | FIM20-I | 1SNA166576R2700 | 1 | |

The various accessories necessary for each mounting option are supplied with the socket as well as the 2 coding pins COP-E-1 (see coding section).

* The BRT contacts pins are to be ordered separately

Accessories

| Rep. | Description | Type | Order code | Packaging | Weight kg |
|--------------------|-------------------------------|------------------------------|-----------------|-----------|-----------|
| For sockets | | | | | |
| 1 | Socket interlocking peg | CVABM | 1SNA183436R0500 | 10 | |
| For plugs | | | | | |
| 2 | Pin 0.22-0.34 mm ² | BRE-T-0.34 | 1SNA168160R1400 | 50 | |
| | Pin 0.75 mm ² | BRE-T-0.75 | 1SNA167779R1300 | 50 | |
| | Pin 1 mm ² | BRE-T-1 | 1SNA164921R1700 | 50 | |
| | Pin 1.5 mm ² | BRE-T-1.5 | 1SNA164922R1000 | 50 | |
| | Pin 2.5 mm ² | BRE-T-2.5 | 1SNA164923R1100 | 50 | |
| | Pin 6 mm ² | BRE-T-6 | 1SNA168147R0300 | 50 | |
| 3 | Pin extraction tool | EXBR1 | 1SNA167008R0300 | 1 | |
| 4 | Crimping tool for BRE pins | 1 to 2.5 mm ² PSC | 1SNA173181R1300 | 1 | |

