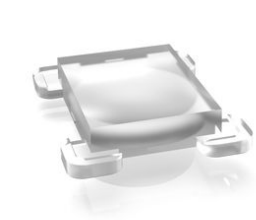


# Key cap body, transparent, 20.7 mm x 17.2 mm



- fields of application
- > Mechanical and system engineering
  - > Automotive
  - > Vehicle construction
  - > Handheld terminals

## description

## technical data

> general

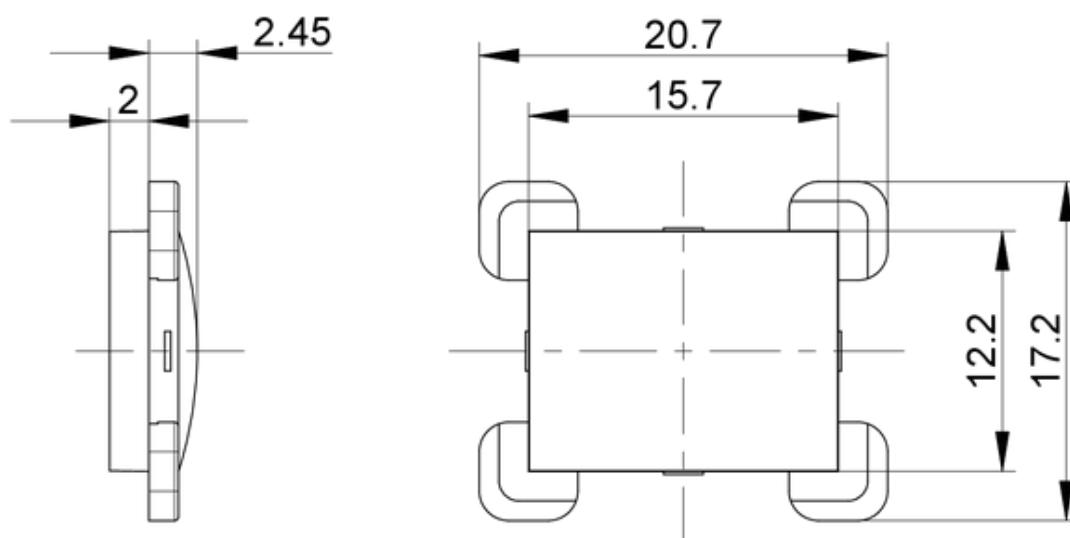
Color	transparent
illuminated	Yes
Packaging unit	10 pcs.
net weight	1 g
MOQ order	500 pcs.
RoHS compliant	Yes
REACH compliant	Yes
Component material	Plastic

- direct links
- > [RAFI eCatalog](#)

> mounting diameters

Outside dimension, length	20.7 mm
Outside dimension, width	17.2 mm
Outside dimension, height	4.45 mm

## Dimensioned drawing



Technical drawing of a PCB assembly showing dimensions and components. The drawing includes labels for various parts and dimensions:

- Dimensions:**
  - $D$ : Thickness of the PCB.
  - $EP$ : Thickness of the case.
  - $min. 2.5$ : Distance from the case to the PCB.
  - $RM$ : Radius of the mounting hole.
  - $min. 1.5$ : Distance from the mounting hole to the PCB.
  - $X$ : Distance from the PCB to the front panel.
  - $BS$ : Thickness of the front panel.
- Components:**
  - case
  - front panel
  - case
  - PCB
  - MICON 5
  - fastening rail
  - spacer sleeve
- Notes:**
  - 2.45 for plastic key caps
  - 1.2 for aluminium key caps