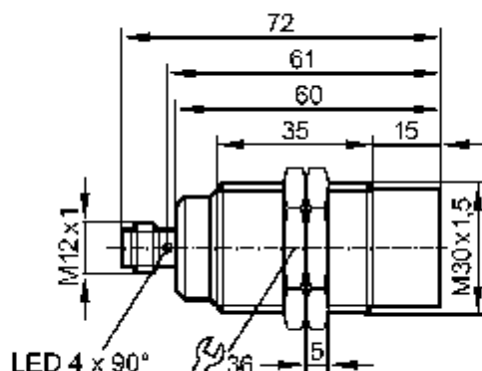


efector100®**II5785****Inductive sensors**

Made in Germany

Product characteristics

Inductive sensor

Metal thread M30 x 1.5

Connector

Increased sensing range

Sensing range 22 mm [nf]

non-flush mountable

Electrical data

Electrical design	DC PNP
Operating voltage [V]	10...36 DC
Current consumption [mA]	< 15 (24 V)
Protection class	II
Reverse polarity protection	yes

Outputs

Output function	normally open
Voltage drop [V]	< 2.5
Current rating [mA]	200
Short-circuit protection	pulsed
Overload protection	yes
Switching frequency [Hz]	50

Range

Sensing range [mm]	22
Operating distance [mm]	0...17.6

Accuracy / deviations

Correction factors	mild steel = 1 / stainless steel approx. 0.7 / brass approx. 0.4 / Al approx. 0.3 / Cu approx. 0.2
--------------------	--

Hysteresis [% of Sr]	1...15
----------------------	--------

Environment

Ambient temperature [°C]	-25...70
--------------------------	----------

Protection	IP 67
------------	-------

Tests / approvals

EMC	EN 60947-5-2	
	EN 55011:	class B

MTTF [Years]	1762
--------------	------

Mechanical data

Mounting	non-flush mountable
----------	---------------------

Housing materials	brass white bronze coated; active face: PBT
-------------------	---

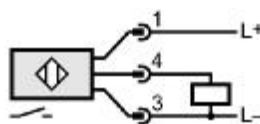
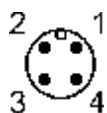
Weight [kg]	0.181
-------------	-------

Displays / operating elements

Output status indication	LED	yellow
--------------------------	-----	--------

Electrical connection

Connection	M12 connector
------------	---------------

Wiring**Accessories**

Accessories (included)	2 lock nuts
------------------------	-------------

ifm electronic gmbh • Friedrichstraße 1 • 45128 Essen — We reserve the right to make technical alterations without prior notice. — GB — II5785-00 — 05/03.2003