



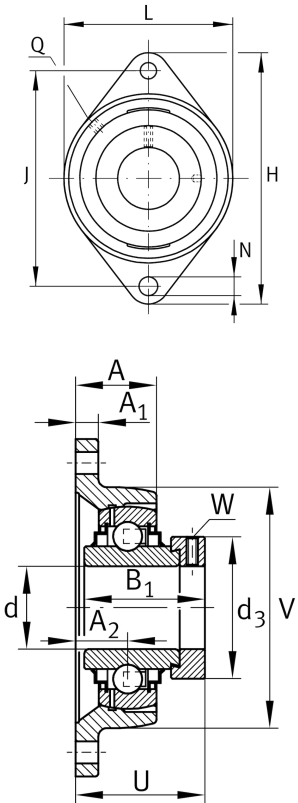
RCJT35-XL-N

Flanged housing unit

Housing units RCJT, two-bolt flanged housing units, cast iron, eccentric locking collar, R seals

X-life

Technical information



Your current product variant

Groove	N	Cast iron housing with undercut slot for end caps
Material	GG	Grey cast iron

Main Dimensions & Performance Data

d	35 mm	Bore diameter
L	92 mm	Flange width
H	155 mm	Height flange
U	53.5 mm	Total height unit
C _r	25,500 N	Basic dynamic load rating, radial
C _{0r}	15,300 N	Basic static load rating, radial
C _{ur}	800 N	Fatigue load limit, radial
≈m	1.21 kg	Weight

Mounting dimensions

J	130 mm	Distance fixing bore
N	14 mm	Fixing bore
n	2	Number of screwing holes
W	5 mm	Width of flats



Dimensions

A	32.5 mm	Height housing
A ₁	12.5 mm	Thickness of flange
A ₂	21 mm	Distance raceway
B ₁	51.3 mm	Locking collar total width
V	92 mm	Shoulder diameter housing
Q	M6	Connection thread for lubrication
d ₃	55 mm	Outside diameter locking collar

Additional information

1	Number of housings
CJT07	Housing
GE35-XL-KRR-B	Bearing designation
KASK07	Protecting cap

Temperature range

T _{min}	-20 °C	Operating temperature min.
T _{max}	120 °C	Operating temperature max.