

### Main Features

- Adaptation of different connections
- Stainless steel
- Version with swiveling nut for easy positioning of the measuring instrument and installation of differential pressure gauges on manifolds

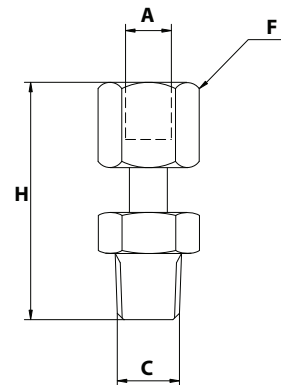
### Applications

- Oil & Gas / Chemical
- Water & Waste water
- Energy
- Machinery

### Ordering details ARIN (with swiveling nut)

		-	x	x	xx
<b>Model</b>	Intermediate connectors	ARIN			
<b>Material</b>	Stainless steel		2		
<b>Process connection</b>	1/2 NPT			6	
<b>Instrument connection</b>	G 1/4 swiveling nut				F6
	G 1/2 swiveling nut				F5
	1/2 NPT swiveling nut				F8

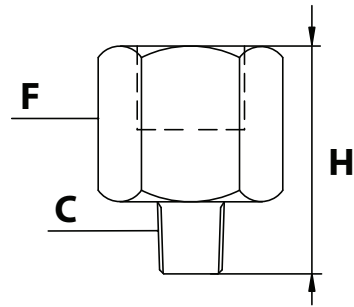
### Dimension (mm)



	Dimensions				Material	Max. pressure (bar)		
	A	C	F	H		20 °C	100 °C	400 °C
<b>ARIN-26F5</b>	G 1/2	1/2 NPT	○ 27	75	1.4404 (316L)	400	400	250
<b>ARIN-26F6</b>	G 1/4	1/2 NPT	○ 27	62.5	1.4404 (316L)	250	250	150
<b>ARIN-26F8</b>	1/2 NPT	1/2 NPT	○ 27	79	1.4571 (316Ti)	400	400	200

Ordering details ARIN (versions in one piece)

		-	x	x	xx
<b>Model</b>					
Intermediate connectors	ARIN	-			
<b>Material</b>					
Brass				L	
Stainless steel				2	
<b>Process connection</b>					
G 1/8					1
G 1/4					2
G 3/8					J
G 1/2					3
1/4 NPT					5
1/2 NPT					6
M10 x 100					7
G 1/4 female					H
G 1/2 female					L
1/4 NPT female					8
1/2 NPT female					N
M10 x 100 female					P
<b>Instrument connection <sup>(2)</sup></b>					
G 1/4 female					0H
G 1/2 female					0L
1/8 NPT female					CF
1/4 NPT female					08
1/2 NPT female					0N



Dimensions for reference only <sup>(1)</sup>

	C	F	H
<b>M10 x 100</b>		∅ 27	40
<b>G 1/4</b>		∅ 27	45
<b>1/4 NPT</b>		∅ 27	40
<b>G 3/8</b>		∅ 27	43
<b>1/2 NPT</b>		∅ 27	45

<sup>(1)</sup> Valid for the mentioned female / male versions. Others on request.

<sup>(2)</sup> Connectors with male thread on both sides on request.

Example: ARIN-2606 for 1/2 NPT - 1/2 NPT.