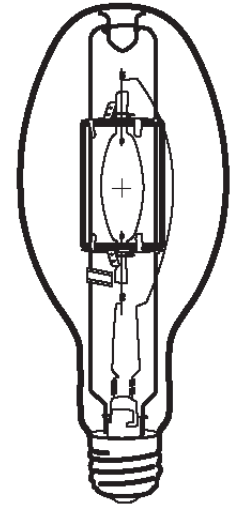


HIPE 350W/V/UVS/PS/4K
Product Number: 10068
Lamp Type: Uni-Form Pulse Start

Control Gear: Ballast + Ignitor

Performance Data

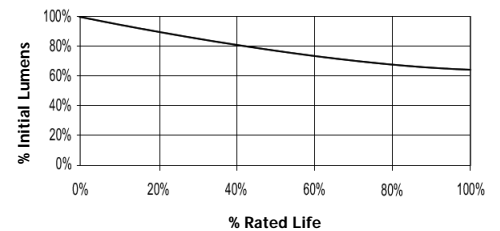
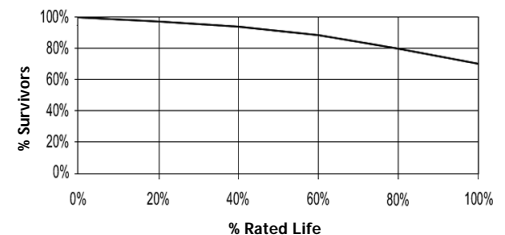
Light Output (Lumens @ 100 hours)	35000
Lamp Lumens Per Watt	100
Rated Life (Hrs. @ 10 Hr. /Start)	20000+
Correlated Colour Temperature (K)	4000
Chromaticity (CIE - X Y)	385, 390
Colour Rendering Index (CRI) or (Ra)	65
Typical Warm Up Time (Minutes)	2-3
Typical Hot Restart Time (Minutes)	5-8
Burning Position	Vertical±15°


Physical Data / Requirements

Base Designation	E40
Bulb Designation	E120
Bulb Diameter (mm)	120
Max. Overall Length (mm)	296
Light Centre Length (mm)	182
Effective Arc Length (mm)	38.4
Max. Base Temperature (°C)	250
Max. Bulb Temperature (°C)	400
Luminaire Type	Open/Enclosed
Socket Pulse Rating (KV)	4.5

Lamp Electrical Data / Requirements

IEC Standard	-
Lamp Wattage (W)	350
Lamp Operating Voltage (V)	135
Lamp Operating Current (Amps)	2.8
Min. Open Circuit Voltage (RMS)	198
Min. - Max. Starting Pulse (Peak V)	3000-4500
Min. Pulse Width at 2700V (microseconds)	1
Min. Pulse Rate Per ½ cycle	1
Pulse Position (Electrical Degrees)	60-90, 240-270

Lumen Maintenance

Lamp Mortality

Revision: 28/02/2006

Notes:

The specification contains data about typical performance on 50Hz sine wave ballast at nominal power. Actual values may depend on ballast and applications. Complies with (CE), Low Voltage (CE), WEEE and RoHS Directives.

Minimum Operating Temperature: -40°C