

# EV-T2SOCCR-B - Protective cover



1347421

<https://www.phoenixcontact.com/in/products/1347421>

Please be informed that the data shown in this PDF document is generated from our online catalog. Please find the complete data in the user documentation. Our general terms of use for downloads are valid.



CHARX connect modular, Type 2, Protective cover, Accessories, Basic, circular, Front mounting, M5 thread, with self-locking mechanism, for attaching to infrastructure charging sockets, Embossed PHOENIX CONTACT logo, IEC 62196-2

## Product description

Self-closing protective cover for infrastructure charging socket

## Your advantages

- Developed and produced in accordance with the IATF 16949 automotive standard and ISO 9001
- Individual branding, thanks to the use your own logo
- Reliable protection of your socket outlet from weather and vandalism

## Commercial data

Item number	1347421
Packing unit	1 pc
Minimum order quantity	1 pc
Sales key	*****
Product key	XWBAFC
GTIN	4063151663605
Weight per piece (including packing)	22.22 g
Weight per piece (excluding packing)	22.22 g
Customs tariff number	39269097
Country of origin	DE

# EV-T2SOCR-B - Protective cover



1347421

<https://www.phoenixcontact.com/in/products/1347421>

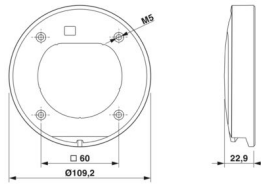
## Technical data

### Product properties

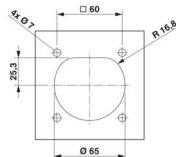
Product type	Protective cover for Socket Outlet
Product family	CHARX connect modular
Application	for attaching to infrastructure charging sockets
Design (Protective cover)	circular
Type	Accessories
	Basic
Design	with self-locking mechanism
Compatibility	compatible with shutter, see accessories
Affixed logo	Embossed PHOENIX CONTACT logo
Charging standard	Type 2
Charging mode	Mode 3, Case B
Customer variations	On request

### Dimensions

#### Protective cover

Dimensional drawing	
Depth	22.9 mm
Diameter	109.2 mm

#### Bore dimensions

Dimensional drawing	
Width	60 mm
Height	60 mm

### Material specifications

Color (Protective cover)	black (9005)
Material (Protective cover)	Plastic

### Mechanical properties

Type of cover movement	Self-locking
------------------------	--------------

# EV-T2SO-CR-B - Protective cover



1347421

<https://www.phoenixcontact.com/in/products/1347421>

## Environmental and real-life conditions

### Ambient conditions

Degree of protection (Protective cover)	IP54
	IK08
Ambient temperature (operation)	-30 °C ... 50 °C
Ambient temperature (storage/transport)	-40 °C ... 80 °C
Altitude	5000 m (above sea level)

## Standards and regulations

### Standards

Standards/regulations	IEC 62196-2
-----------------------	-------------

## Mounting

Mounting type Protective cover	Front mounting (rear screw connection)
Fixing screws	M5 thread

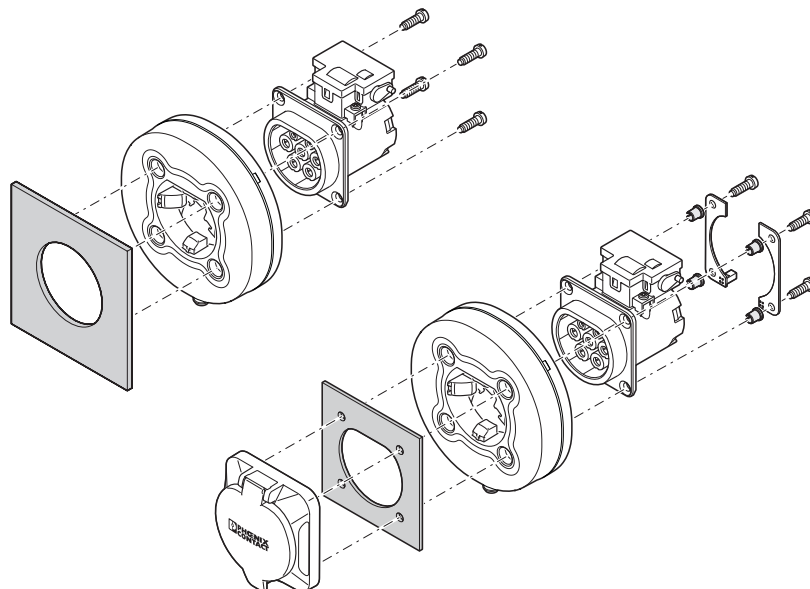
# EV-T2SOCR-B - Protective cover

1347421

<https://www.phoenixcontact.com/in/products/1347421>

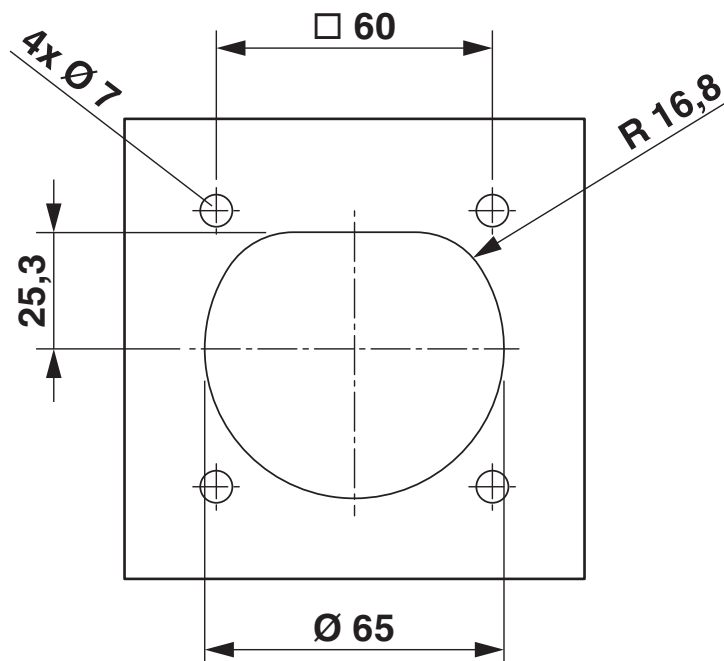
## Drawings

Exploded view



Rear mounting

Dimensional drawing



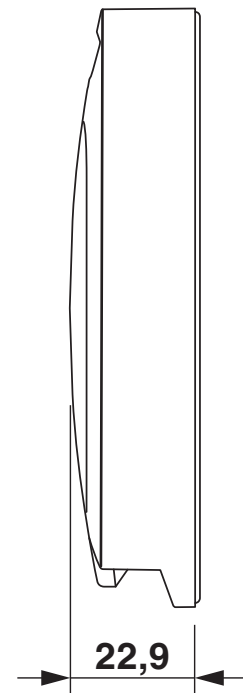
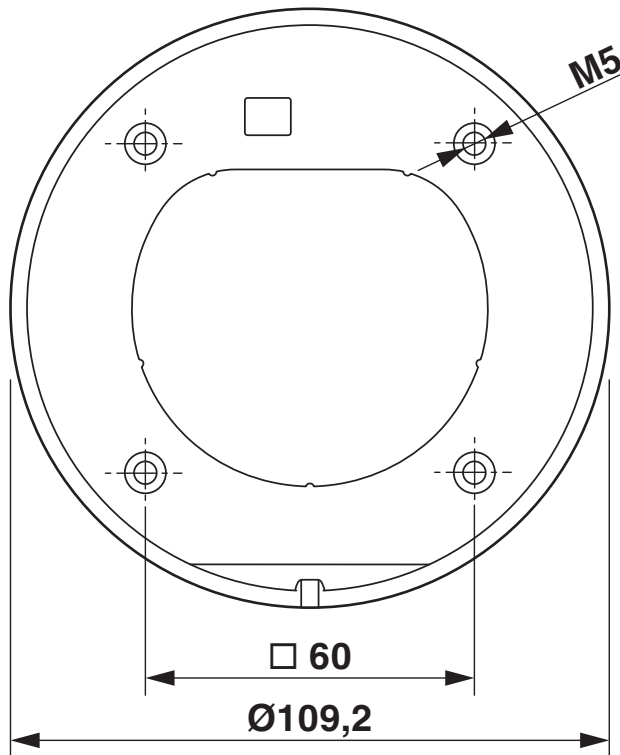
# EV-T2SO-CR-B - Protective cover

1347421

<https://www.phoenixcontact.com/in/products/1347421>



Dimensional drawing



# EV-T2SOCCR-B - Protective cover



1347421

<https://www.phoenixcontact.com/in/products/1347421>

## Classifications

### ECLASS

ECLASS-11.0	27144792
ECLASS-12.0	27144792
ECLASS-13.0	27144792

### ETIM

ETIM 9.0	EC002884
----------	----------

### UNSPSC

UNSPSC 21.0	39121500
-------------	----------

# EV-T2SOCCR-B - Protective cover



1347421

<https://www.phoenixcontact.com/in/products/1347421>

## Environmental product compliance

EU RoHS	
Fulfills EU RoHS substance requirements	Yes, No exemptions
China RoHS	
Environment friendly use period (EFUP)	EFUP-10
	An article-related China RoHS declaration table can be found in the download area for the respective article under "Manufacturer declaration". For all articles with EFUP-E, no China RoHS declaration table issued and required.
EU REACH SVHC	
REACH candidate substance (CAS No.)	No substance above 0.1 wt%

# EV-T2SOCR-B - Protective cover

1347421

<https://www.phoenixcontact.com/in/products/1347421>



## Accessories

### EV-T2M3SO12-3P-B - Infrastructure charging socket

1164309

<https://www.phoenixcontact.com/in/products/1164309>



CHARX connect modular, Type 2, Infrastructure charging socket, 32 A , 480 V AC, Basic, without single-core wires, locking actuator: 12 V, 3-pos., square, Rear panel mounting, M5 thread, housing: black, for charging electric vehicles (EV) with alternating current (AC), PHOENIX CONTACT logo, IEC 62196-2

### EV-T2M3SO12-4P-B - Infrastructure charging socket

1164300

<https://www.phoenixcontact.com/in/products/1164300>



CHARX connect modular, Type 2, Infrastructure charging socket, 32 A , 480 V AC, Basic, without single-core wires, locking actuator: 12 V, 4-pos., square, Rear panel mounting, M5 thread, housing: black, for charging electric vehicles (EV) with alternating current (AC), PHOENIX CONTACT logo, IEC 62196-2



## EV-T2SOCR-B - Protective cover

1347421

<https://www.phoenixcontact.com/in/products/1347421>



## EV-T2M3SOS - Shutter for infrastructure charging socket

1200676

<https://www.phoenixcontact.com/in/products/1200676>



CHARX connect modular, Type 2, Shutter for infrastructure charging socket, Accessories, circular, Rear mounting, M5 thread, with self-locking mechanism, for attaching to infrastructure charging sockets, Without logo, IEC 61851-1, IEC 62196-1, Compatible protective covers can be found under Accessories.

---

Phoenix Contact 2025 © - all rights reserved

<https://www.phoenixcontact.com>

PHOENIX CONTACT (I) Pvt. Ltd.

A-58/2, Okhla Industrial Area, Phase - II, New Delhi-110 020

+91.1275.71420

[info@phoenixcontact.co.in](mailto:info@phoenixcontact.co.in)